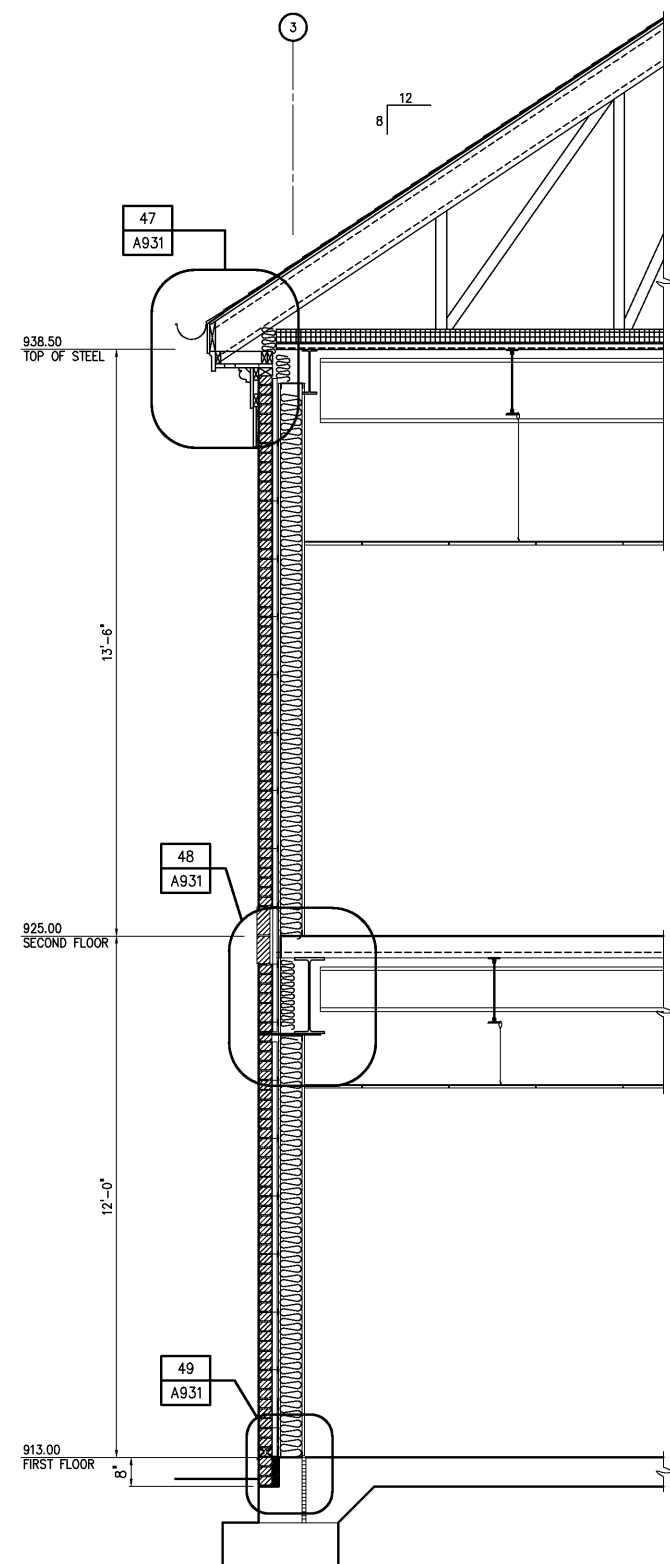


SECTION A
1/2"=1'-0" A920



SECTION B
1/2"=1'-0" A920

				DESIGNED	WHR	THIS DOCUMENT ORIGINALLY ISSUED FOR CONSTRUCTION AND SEALED BY ROBERT S. DIFIORE, SEAL NO. 22769	RECORD DRAWING	<div><div>Hazen and Sawyer</div><div>Environmental Engineers & Scientists</div><div>4011 WestChase Blvd, Raleigh, North Carolina 27607</div></div>	CITY OF ROANOKE VIRGINIA	ADMINISTRATION BUILDING	THE SCALE BAR SHOWN BELOW MEASURES ONE INCH LONG ON THE ORIGINAL DRAWING.	DATE JANUARY 2004	
				DRAWN	ALB							H & S JOB NUMBER	30788C
				CHECKED								CONTRACT NUMBER	C
3	RECORD DRAWING	JAN 2006	RLT	PROJ. ENGR.	DAN	THIS DOCUMENT ORIGINALLY ISSUED FOR CONSTRUCTION AND SEALED BY RONALD L. TAYLOR, SEAL NO. 024649			REGIONAL WATER POLLUTION CONTROL PLANT PROCESS TRAIN IMPROVEMENTS	ARCHITECTURAL		DRAWING NUMBER	A927
2	CONSTRUCTION	JAN 2004	RLT										
1	REGULATORY APPROVAL	NOV 2003	RLT										
NO.	ISSUED FOR	DATE	BY	APPROVED									