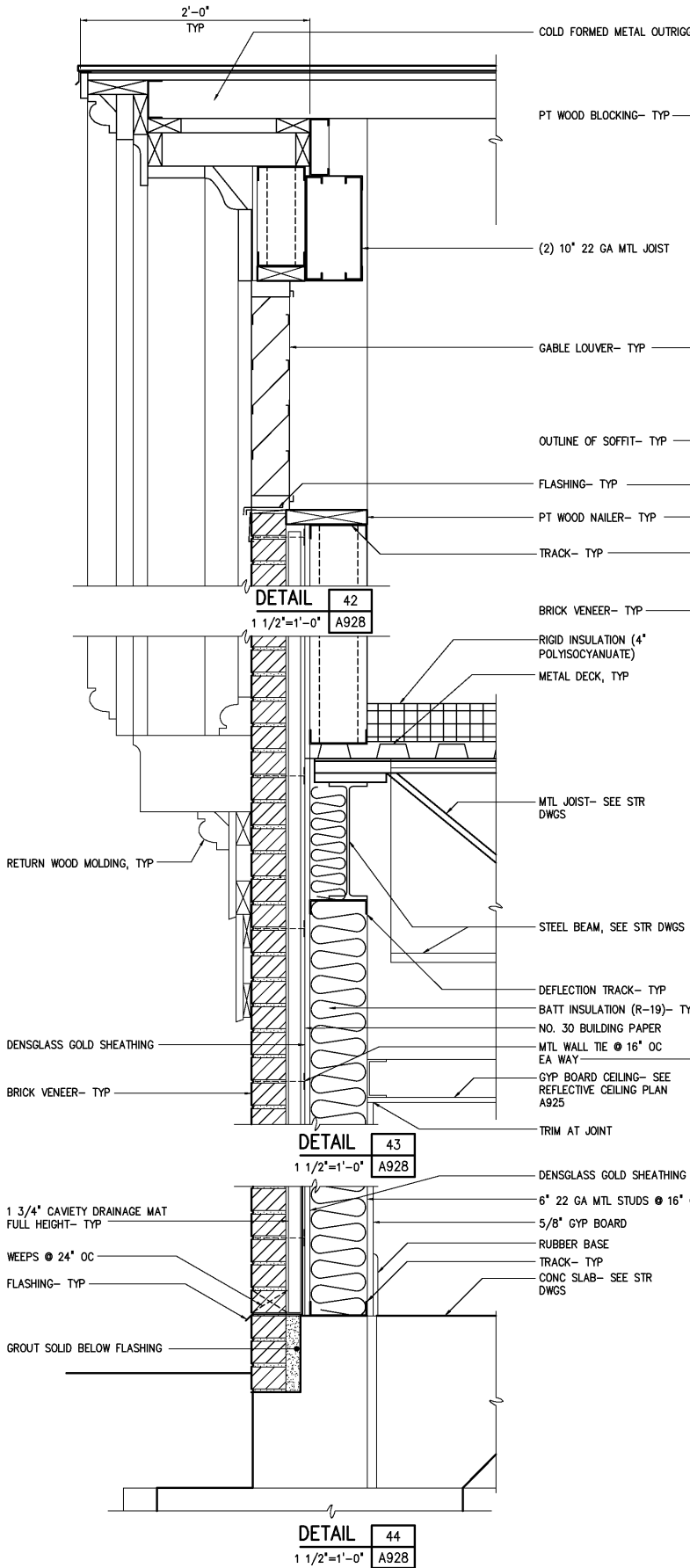
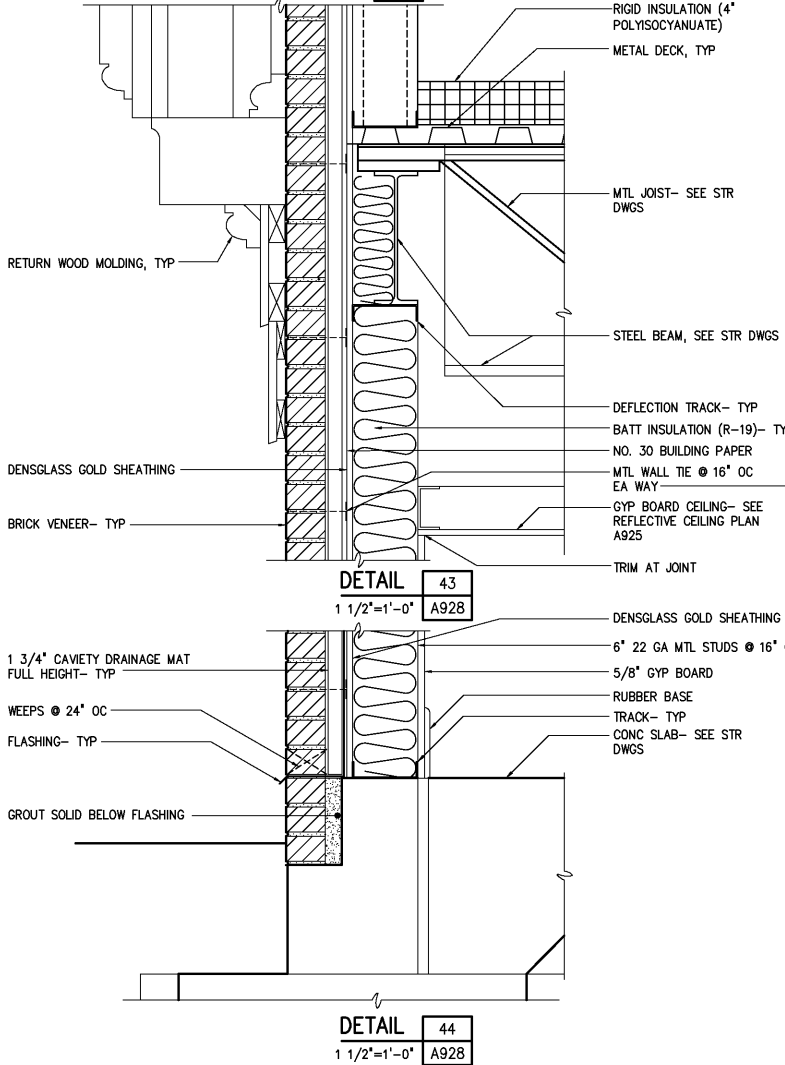


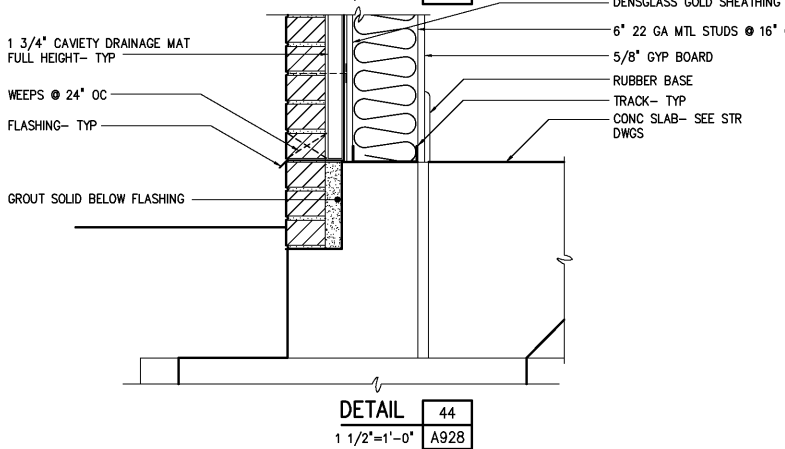
DETAIL 60
1 1/2"=1'-0" A923



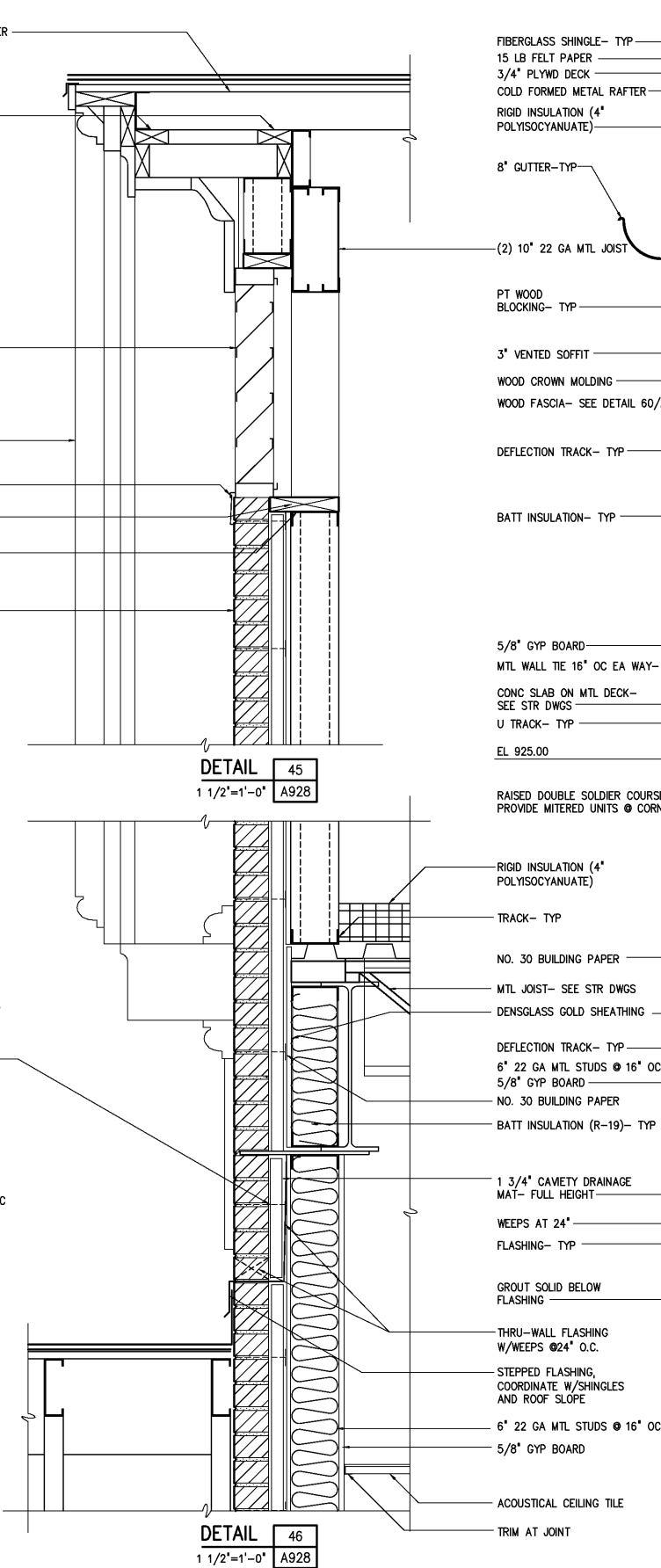
DETAIL 42
1 1/2"=1'-0" A928



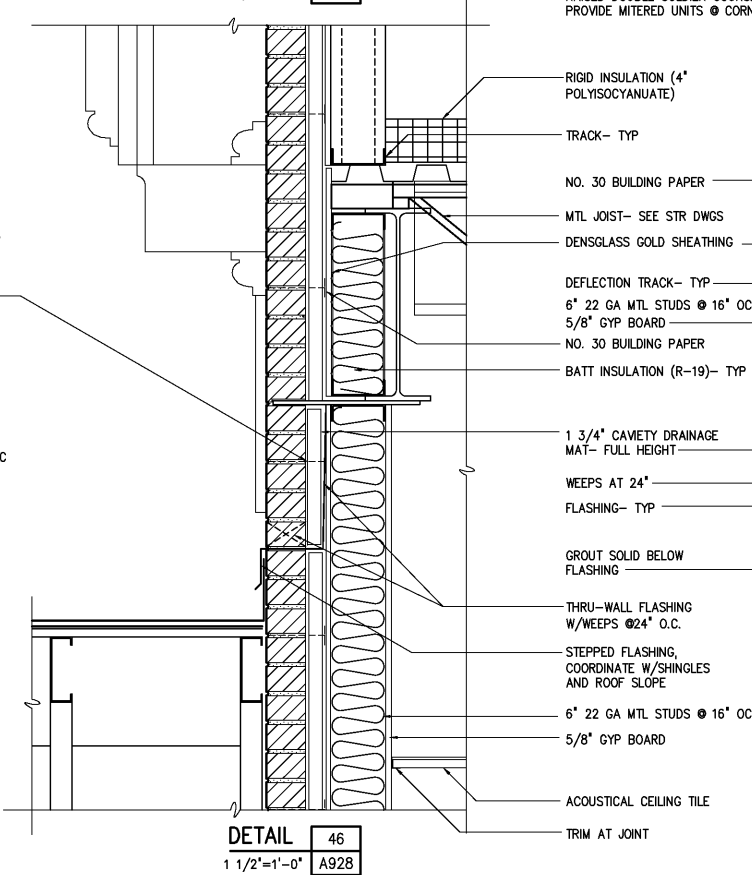
DETAIL 43
1 1/2"=1'-0" A928



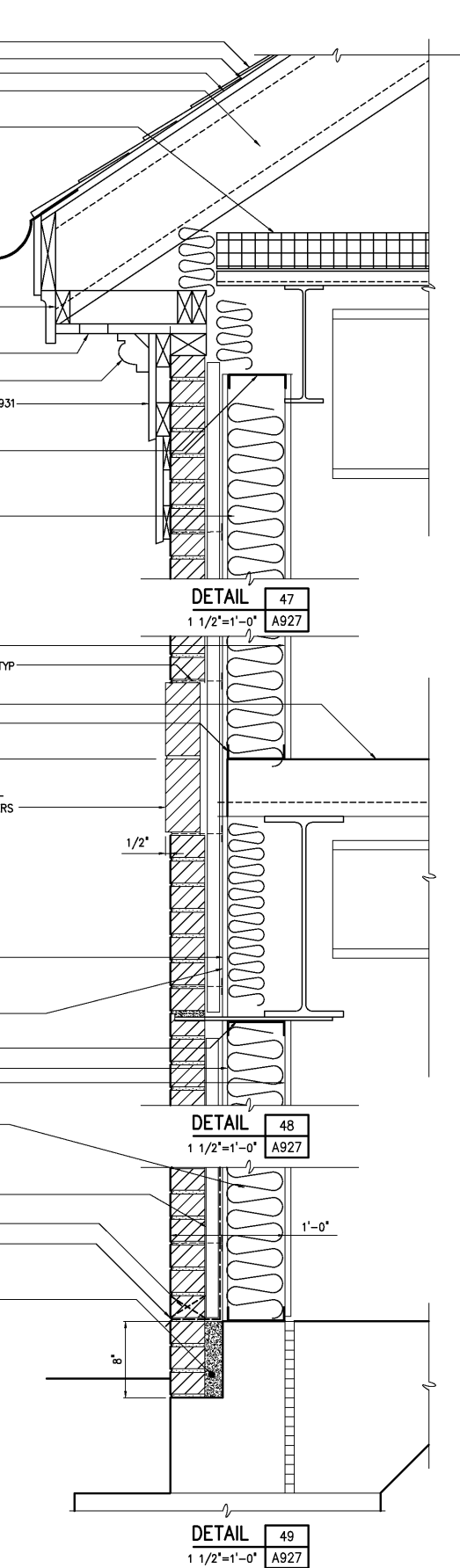
DETAIL 44
1 1/2"=1'-0" A928



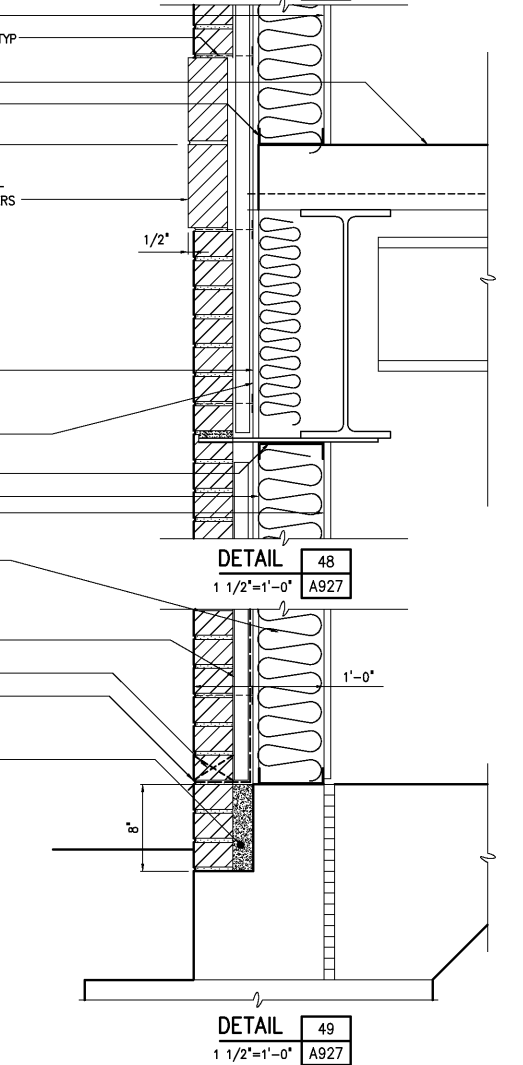
DETAIL 45
1 1/2"=1'-0" A928



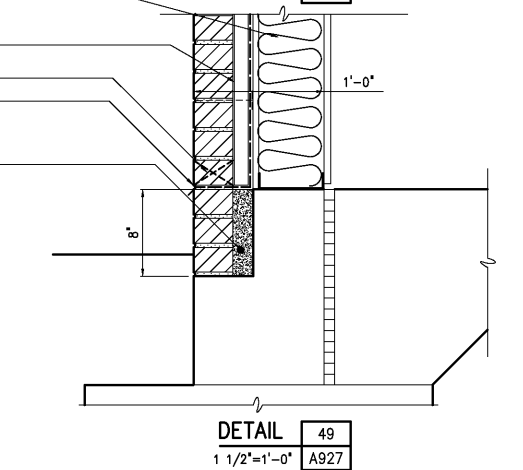
DETAIL 46
1 1/2"=1'-0" A928



DETAIL 47
1 1/2"=1'-0" A927



DETAIL 48
1 1/2"=1'-0" A927



DETAIL 49
1 1/2"=1'-0" A927

DESIGNED	LU
DRAWN	ALB
CHECKED	
PROJ. ENGR.	H & S
APPROVED	
NO.	
3	RECORD DRAWING
2	CONSTRUCTION
1	REGULATORY APPROVAL
NO.	ISSUED FOR
	DATE
	BY

THIS DOCUMENT ORIGINALLY ISSUED FOR CONSTRUCTION AND SEALED BY ROBERT S. DIFIORE, SEAL NO. 22769

THIS DOCUMENT ORIGINALLY ISSUED FOR CONSTRUCTION AND SEALED BY RONALD L. TAYLOR, SEAL NO. 024649

RECORD DRAWING

THIS DRAWING HAS BEEN MODIFIED TO REFLECT FIELD CHANGES REPORTED BY THE CONTRACTOR OR ANOTHER PARTY, BUT NOT VERIFIED BY THE CERTIFYING ENGINEER. THIS DOCUMENT ORIGINALLY ISSUED AND SEALED BY WILLIAM H. RUSSELL, SEAL NUMBER 008532. THIS MEDIA SHALL NOT BE CONSIDERED A CERTIFIED DOCUMENT.

Hazen and Sawyer
Environmental Engineers & Scientists
4011 WestChase Blvd, Raleigh, North Carolina 27607

CITY OF ROANOKE
VIRGINIA

REGIONAL WATER POLLUTION CONTROL PLANT
PROCESS TRAIN IMPROVEMENTS

ADMINISTRATION BUILDING
ARCHITECTURAL
DETAILS

THE SCALE BAR SHOWN BELOW MEASURES ONE INCH LONG ON THE ORIGINAL DRAWING.	DATE JANUARY 2004
H & S JOB NUMBER	30788C
CONTRACT NUMBER	C
DRAWING NUMBER	A931