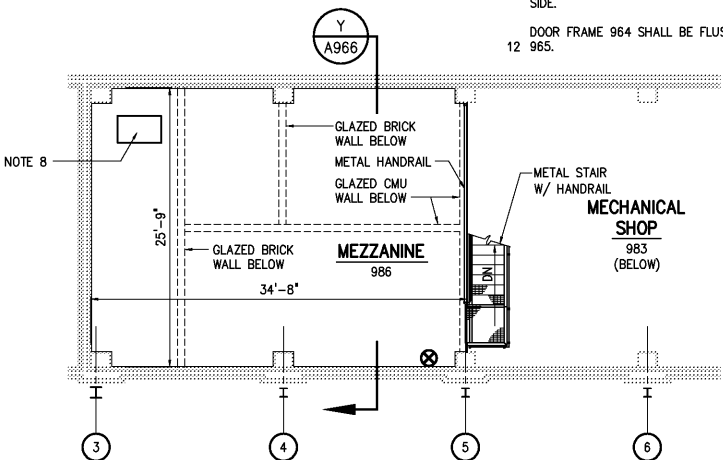
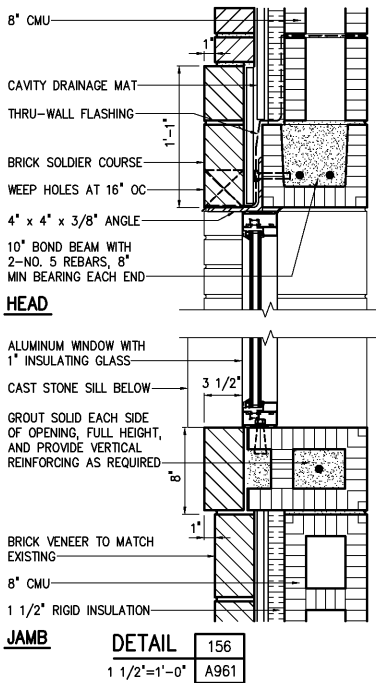


NOTES:

- 1 VERTICAL MASONRY REINFORCEMENT SHALL BE #5@40' OC IN FULLY GROUTED CELLS (PROVIDE #5@32' OC BELOW MEZZANINE). PROVIDE #5 BAR AT ALL CORNERS AND ADJACENT TO ALL OPENINGS. SEE DETAIL 21/S966 FOR MASONRY ATTACHMENT TO STEEL BEAM.
- 2 INTERIOR MASONRY WALLS TO BE 10'-0" HIGH. FILL UNGROUTED CELLS WITH CORE-FILL 500 OR EQUAL.
- 3 DIMENSIONS GIVEN ARE TO NOMINAL FACE OF MASONRY.
- 4 EXISTING DOOR FRAME TO REMAIN AFTER REMOVAL OF EXISTING DOORS.
- 5 EXISTING TELEPHONE DESK TO REMAIN.
- 6 NEW WIRE MESH PARTITION TO 8'-0" AFF. BRACE AS REQUIRED FOR RIGID INSTALLATION. PROVIDE 4'-0"W x 8'-0"H GATES AS SPECIFIED.
- 7 RELOCATE EXISTING METAL SHELVING TO NEW LOCATIONS SHOWN.
- 8 NEW LOCATION OF EXISTING AIR COMPRESSOR.
- 9 CONCRETE MASONRY UNIT WALLS TO EXTEND TO METAL DECK ABOVE.
- 10 SEE SHEET A6 FOR PARTITION TYPES.
- 11 PROVIDE NEW MASONRY INFILL AT EXISTING LOUVER OPENING. PROVIDE GLAZED BRICK TO MATCH ON NORTH SIDE. PROVIDE BRICK TO MATCH ON SOUTH SIDE.
- 12 DOOR FRAME 964 SHALL BE FLUSH WITH CORRIDOR 965.



DETAIL 150
1/8"=1'-0"



LEGEND:

- WINDOW NUMBER - SEE DRAWING NO. A1
- DOOR NUMBER - SEE DRAWING NO. A1
- FE- FIRE EXTINGUISHER
- PARTITION TYPE

DESIGNED: WHR DRAWN: ALB CHECKED: PROJ. ENGR: DAN APPROVED:				RECORD DRAWING THIS DRAWING HAS BEEN MODIFIED TO REFLECT FIELD CHANGES REPORTED BY THE CONTRACTOR OR ANOTHER PARTY, BUT NOT VERIFIED BY THE CERTIFYING ENGINEER. THIS DOCUMENT ORIGINALLY ISSUED AND SEALED BY WILLIAM H. RUSSELL, SEAL NUMBER 008532. THIS MEDIA SHALL NOT BE CONSIDERED A CERTIFIED DOCUMENT.		HAZEN AND SAWYER Environmental Engineers & Scientists 4011 WestChase Blvd, Raleigh, North Carolina 27607		CITY OF ROANOKE VIRGINIA REGIONAL WATER POLLUTION CONTROL PLANT PROCESS TRAIN IMPROVEMENTS		MAINTENANCE BUILDING MODIFICATIONS ARCHITECTURAL TOP PLAN		THE SCALE BAR SHOWN BELOW MEASURES ONE INCH LONG ON THE ORIGINAL DRAWING. DATE: JANUARY 2004 H & S JOB NUMBER: 30788C CONTRACT NUMBER: C DRAWING NUMBER: A961	
---	--	--	--	--	--	--	--	---	--	---	--	---	--