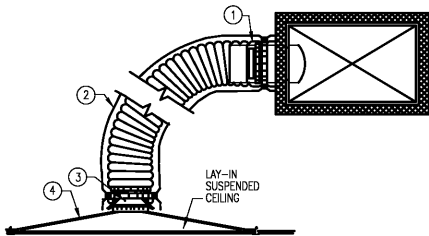


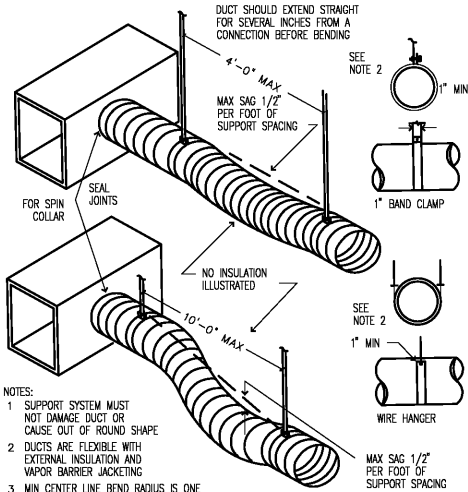
MECHANICAL PLAN
3/16"=1'-0"

MECHANICAL HVAC LEGEND			
	SUPPLY AIR DUCT SECTION		SUPPLY AIR DIFFUSER
	RETURN AIR DUCT SECTION		RETURN AIR GRILLE OR REGISTER
	SQUARE SHEETMETAL DUCTWORK (DIMENSIONS ARE IN INCHES)		EXHAUST AIR GRILLE OR REGISTER
	ROUND SHEETMETAL DUCTWORK (DIMENSIONS ARE IN INCHES)		DIFFUSER SYMBOL - LETTER=TYPE, NUMBER=CFM
	TRANSITION		FIRE DAMPER
	SQUARE-TO-ROUND TRANSITION		MANUAL OPERATED DAMPER
	DUCT TURNING UP		DUCT MOUNTED SMOKE DETECTOR
	DUCT TURNING DOWN		THERMOSTAT (INSTALL 60" AFF)
	SQUARE ELBOW WITH MULTIPLE TURNING VANES		POINT OF CONNECTION
	SPIN-IN FITTING WITH SCOOP EXTRACTOR AND BALANCING DAMPER WITH LOCKING QUADRANT		
	FLEXIBLE DUCT		



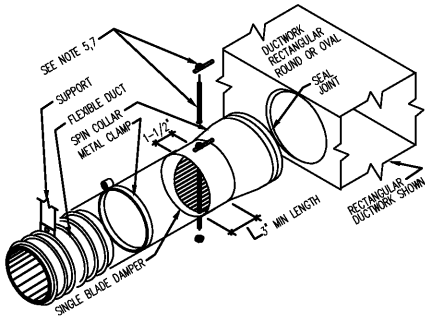
- NOTES:
1. SPIN COLLAR TYPE CONNECTOR, EXTERNALLY INSULATED, WITH VOLUME DAMPER AND DAMPER LOCK. SEE DETAIL, THIS SHEET.
 2. PRE-INSULATED FLEX DUCT AS REQUIRED, INSTALLED, PERMANENTLY SEALED AND SUPPORTED TO PREVENT KINKING AND SHARP TURNS.
 3. ROUND TO SQUARE ADAPTER AS REQUIRED.
 4. 1-90° TURN ALLOWED.
 5. MAXIMUM FLEX LENGTH NOT TO EXCEED 10'-0".
 6. SUPPORT SPACING AS SPECIFIED.

FLEXIBLE DUCT
DETAIL 2
NOT TO SCALE M901



- NOTES:
1. SUPPORT SYSTEM MUST NOT DAMAGE DUCT OR CAUSE OUT OF ROUND SHAPE.
 2. DUCTS ARE FLEXIBLE WITH EXTERNAL INSULATION AND VAPOR BARRIER JACKETING.
 3. MIN CENTER LINE BEND RADIUS IS ONE DIA, (OR INSIDE RADIUS OF D/2).

DUCT SUPPORT
DETAIL 1
NOT TO SCALE M901



- NOTES:
1. SUPPORT AS REQUIRED.
 2. BAND FLEX TO COLLAR AT OUTBOARD END OF COLLAR.
 3. INSTALL SPIN COLLAR DAMPER IN OPEN POSITION; FINAL ADJUSTMENT BY TAB CONTRACTOR.
 4. PULL FLEXIBLE DUCTWORK INSULATION UP TO END OF SPIN COLLAR AT EDGE OF RECTANGULAR DUCTWORK. SEAL VAPOR BARRIER W/GREY TAPE TO PREVENT MOISTURE MIGRATION.
 5. PROVIDE EXTENSION RODS TO ACCOMMODATE INSULATION, PULL TO EDGE OF DUCTWORK AS REQUIRED AS SEAL TO EFFECT VAPOR BARRIER.
 6. TAPE AND SEAL ALL JOINTS TO PREVENT LEAKAGE.
 7. INSTALL LOCKING QUADRANT AND HANDLE ON BOTTOM OF DUCT FOR EASY SERVICE (SHOWN ON TOP FOR EASE OF ILLUSTRATION ONLY).

SPIN-IN COLLAR
DETAIL 3
NOT TO SCALE M901

AIR DISTRIBUTION SCHEDULE						
MARK	MANUFACTURER	MODEL	CFM RANGE	TYPE	PANEL SIZE	NECK SIZE
A	METALAIR	7600-6	0-120	LAY-IN, PERFORATED FACE 4-WAY BLOW, SUPPLY DIFFUSER	24x24	6"
B	METALAIR	7600-6	125-200	LAY-IN, PERFORATED FACE 4-WAY BLOW, SUPPLY DIFFUSER	24x24	8"
C	METALAIR	7600-6	225-400	LAY-IN, PERFORATED FACE 4-WAY BLOW, SUPPLY DIFFUSER	24x24	10"
D	METALAIR	7600-6	150-225	LAY-IN, PERFORATED FACE 4-WAY BLOW, SUPPLY DIFFUSER	24x24	12"
E	METALAIR	7650-6	225-400	LAY-IN, PERFORATED FACE RETURN GRILLE	24x24	8"
F	METALAIR	7650-6	400-600	LAY-IN, PERFORATED FACE RETURN GRILLE	24x24	10"
G	METALAIR	7650-6	600-800	LAY-IN, PERFORATED FACE RETURN GRILLE	24x24	12"

DESIGNED	RDM
DRAWN	RLG
CHECKED	
PROJ. ENGR.	RDM
APPROVED	
NO.	
3	RECORD DRAWING
2	CONSTRUCTION
1	REGULATORY APPROVAL
	ISSUED FOR
	DATE
	BY

RECORD DRAWING

THIS DOCUMENT ORIGINALLY
ISSUED FOR CONSTRUCTION
AND SEALED BY M. GINGER
SC03234, SEAL NUMBER 0402
033234. THIS MEDIA SHALL
NOT BE CONSIDERED A
CERTIFIED DOCUMENT

EDI
Engineered Designs, Inc.
1011 Schaub Dr. Suite 201
Raleigh, North Carolina 27606
Office: 919.851.8481
Fax: 919.851.9703

HAZEN AND SAWYER
Environmental Engineers & Scientists
4011 WestChase Blvd, Raleigh, North Carolina 27607

CITY OF ROANOKE
VIRGINIA

REGIONAL WATER POLLUTION CONTROL PLANT
ADMINISTRATION AND MAINTENANCE BUILDINGS

OPERATIONS/LABORATORY BUILDING MODIFICATIONS
MECHANICAL
NEW WORK

THE SCALE BAR SHOWN BELOW MEASURES ONE INCH LONG ON THE ORIGINAL DRAWING.	DATE JANUARY 2004 H & S JOB NUMBER 30788C	CONTRACT NUMBER C	DRAWING NUMBER M901
--	---	----------------------	------------------------