

MECHANICAL HVAC LEGEND			
	SUPPLY AIR DUCT SECTION		SUPPLY AIR DIFFUSER
	RETURN AIR DUCT SECTION		RETURN AIR GRILLE OR REGISTER
	SQUARE SHEETMETAL DUCTWORK (DIMENSIONS ARE IN INCHES)		EXHAUST AIR GRILLE OR REGISTER
	ROUND SHEETMETAL DUCTWORK (DIMENSIONS ARE IN INCHES)		DIFFUSER SYMBOL - LETTER=TYPE, NUMBER=CFM
	TRANSITION		FIRE DAMPER
	SQUARE-TO-ROUND TRANSITION		MANUAL OPERATED DAMPER
	DUCT TURNING UP		DUCT MOUNTED SMOKE DETECTOR
	DUCT TURNING DOWN		THERMOSTAT (INSTALL 60" AFF)
	SQUARE ELBOW WITH MULTIPLE TURNING VANES		KEYED NOTE NUMBER
	SPIN-IN FITTING WITH SCOOP EXTRACTOR AND BALANCING DAMPER WITH LOCKING QUADRANT		GAS PIPING
	FLEXIBLE DUCT		

OUTSIDE AIR COMPLIANCE SCHEDULE						
SYSTEM	AREA SERVED	AREA (SQ. FT.)	PEOPLE	REQUIRED OUTSIDE AIR	MINIMUM OUTSIDE AIR	DESIGNED OUTSIDE AIR
RTU-1						
RTU-1	MENS - 961	265	8 FLUSHABLE FIXTURES	75 CFM / FIXTURE	450 CFM	450 CFM
RTU-1	WOMEN - 963	230	2 FLUSHABLE FIXTURES	75 CFM / FIXTURE	150 CFM	150 CFM
RTU-1	MENS LOCKER ROOM	520	-	0.5 CFM / SQUARE FOOT	260 CFM	260 CFM
RTU-1	WOMENS LOCKER ROOM	220	-	0.5 CFM / SQUARE FOOT	110 CFM	110 CFM
RTU-1	JANITOR	48	1	20 CFM / PERSON	20 CFM	20 CFM
RTU-1	COORIDOR	320	-	0.05 CFM / SQUARE FOOT	16 CFM	35 CFM
RTU-1	RECORDS STORAGE	265	2	20 CFM / PERSON	40 CFM	40 CFM
RTU-1	ELEC CLOSET	48	1	20 CFM / PERSON	20 CFM	20 CFM
RTU-1	TOTAL				1066 CFM	1080 CFM
RTU-2						
RTU-2	OFFICE AREAS	1220	9	20 CFM / PERSON	180 CFM	180 CFM
RTU-2	CUBICAL AREA	520	4	20 CFM / PERSON	80 CFM	80 CFM
RTU-2	LUNCH ROOM	220	15	20 CFM / PERSON	300 CFM	300 CFM
RTU-2	I/C SHOP	315	2	20 CFM / PERSON	40 CFM	40 CFM
RTU-2	COORIDOR	290	-	0.05 CFM / SQUARE FOOT	14.5 CFM	15 CFM
RTU-2	TOTAL				614.5 CFM	615 CFM
AHU-1						
AHU-1	SHOP AREAS	3850	-	0.3 CFM / SQUARE FOOT	1155 CFM	1155 CFM
AHU-1	COORIDOR	300	-	0.05 CFM / SQUARE FOOT	15 CFM	15 CFM
AHU-1	TOTAL				1170 CFM	1170 CFM
AHU-2						
AHU-2	GENERAL WAREHOUSE	1,250	-	0.3 CFM / SQUARE FOOT	375 CFM	375 CFM
AHU-2	TOTAL				375 CFM	375 CFM

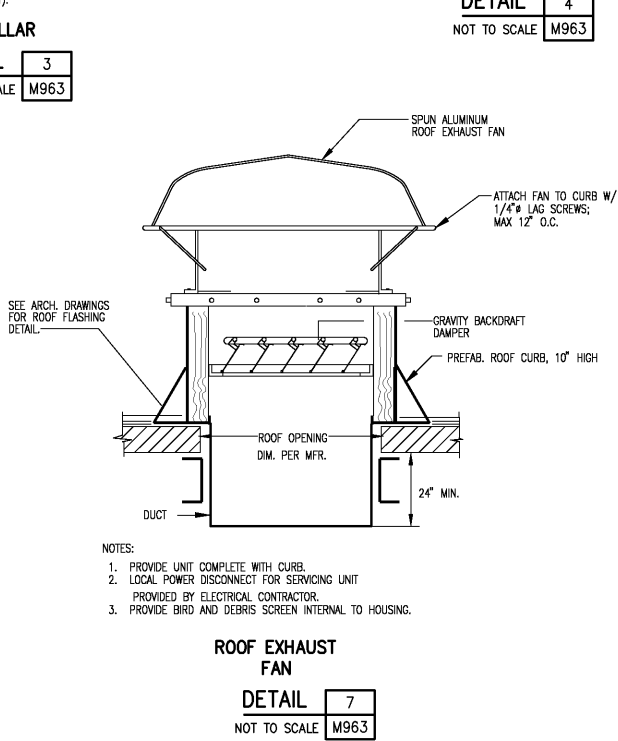
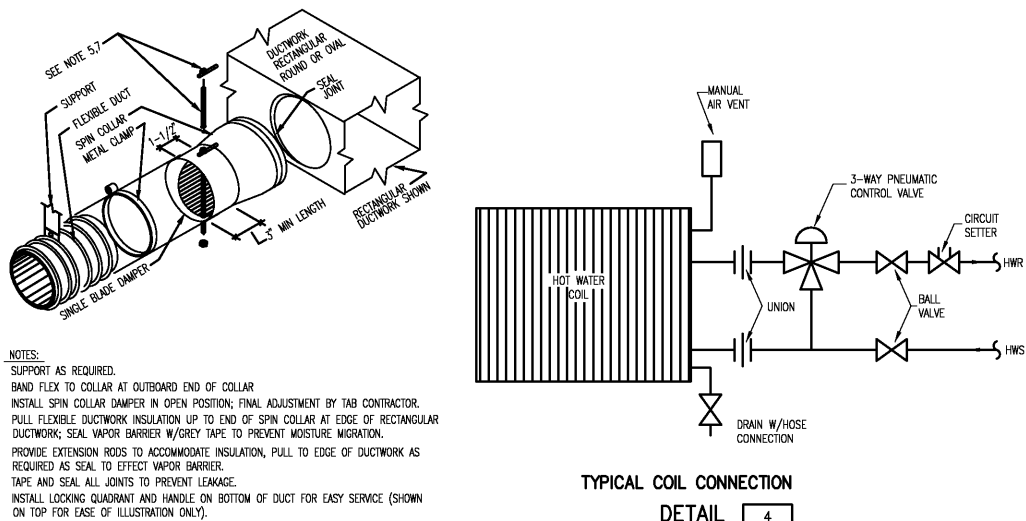
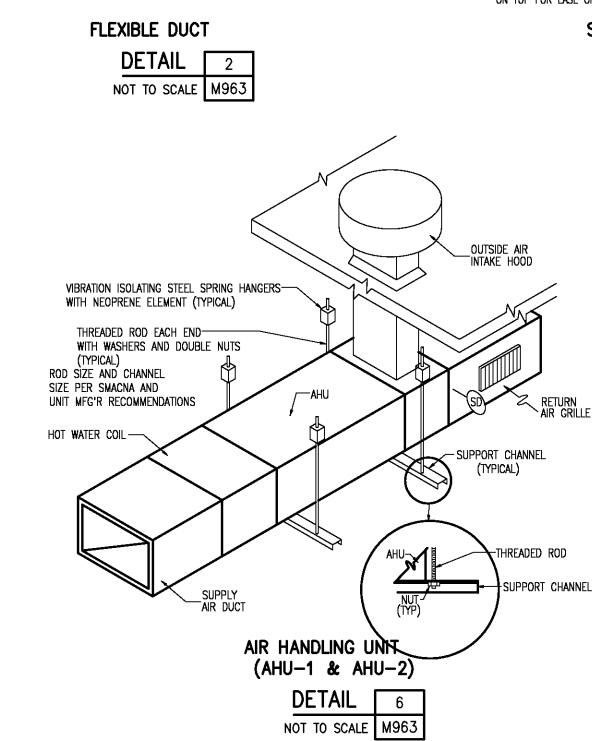
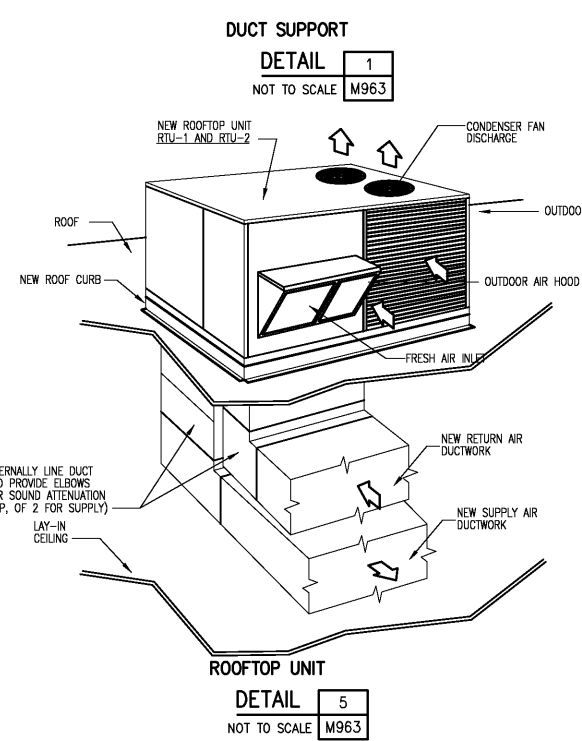
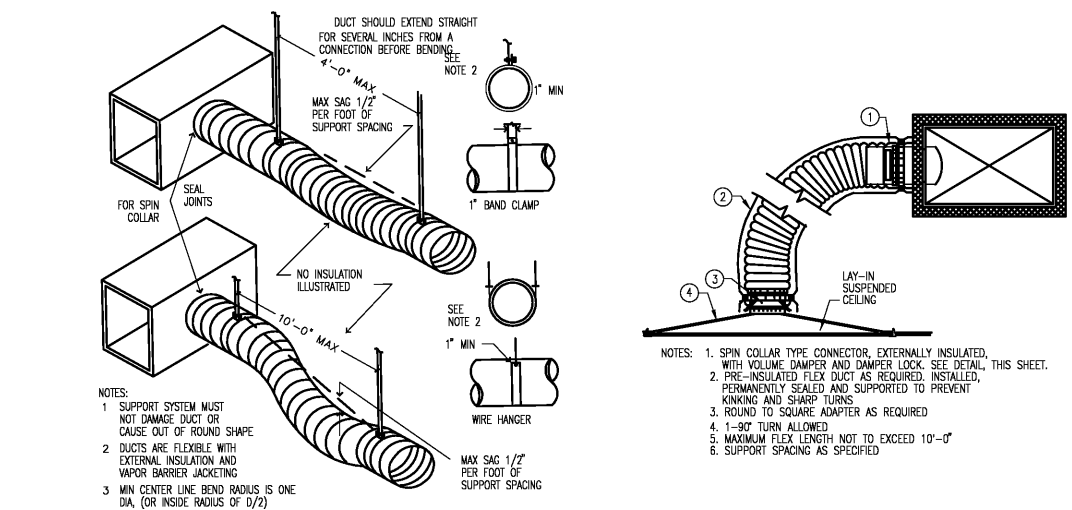
INTAKE/RELIEF HOOD SCHEDULE											
MARK	LOCATION	FREE AREA	PRESS. DROP	CFM	NECK	CURB CAP	INTAKE/ EXHAUST	MFG.	MODEL	REMARKS	
HOOD-1	ROOF	3.02	0.10	1200	16	26x26	EXHAUST	GREENHECK	GRSR-16	PROVIDE ROOF CURB AND BIRDSCREEN	
HOOD-2,3	ROOF	3.02	0.10	1200	16	26x26	INTAKE	GREENHECK	GRSI-16	PROVIDE ROOF CURB AND BIRDSCREEN	
HOOD-4	ROOF	3.24	0.10	2400	24	34x34	INTAKE	GREENHECK	GRSH-24	PROVIDE ROOF CURB AND BIRDSCREEN	

AIR DISTRIBUTION SCHEDULE						
MARK	MANUFACTURER	MODEL	CFM RANGE	TYPE	PANEL SIZE	NECK SIZE
A	METALAIR	7600-6	0-120	LAY-IN, PERFORATED FACE 4-WAY BLOW, SUPPLY DIFFUSER	24x24	6"
B	METALAIR	7600-6	125-200	LAY-IN, PERFORATED FACE 4-WAY BLOW, SUPPLY DIFFUSER	24x24	8"
C	METALAIR	7650-6	225-400	LAY-IN, PERFORATED FACE RETURN GRILLE	24x24	8"
D	METALAIR	7650-6	400-600	LAY-IN, PERFORATED FACE RETURN GRILLE	24x24	10"
E	METALAIR	VH12x6	250	DOUBLE DEFLECTION SIDEWALL SUPPLY GRILLE	12x6	12x6
F	METALAIR	VH16x8	500	DOUBLE DEFLECTION SIDEWALL SUPPLY GRILLE	16x8	16x8
G	METALAIR	RH24x10	750	SIDEWALL RETURN GRILLE	24x10	24x10
H	METALAIR	RH20x20	1000	SIDEWALL RETURN GRILLE	20x20	20x20
I	METALAIR	RH30x18	1300	SIDEWALL RETURN GRILLE	30x18	30x18
J	METALAIR	RH14x14	500	SIDEWALL RETURN GRILLE	14x14	14x14

AIR HANDLING UNIT SCHEDULE																									
MARK	LOCATION	FAN DATA				COOLING DATA						ELECTRICAL DATA				HEATING DATA				MANUFACTURER	MODEL	REMARKS			
		TYPE	CFM	O.A. CFM	EXT. S.P.	HP	CAPACITY TOTAL	CAPACITY SENSIBLE	E.A. D.B.	E.A. W.B.	L.A. D.B.	L.A. W.B.	VOLTS	PHASE	HERTZ	MCA	MOCP	CAPACITY MBH	CFM				ΔP	EWI	LWT
AHU-1	SHOP AREA	CABINET	3,000	1,170	1.25"	1.5	N/A	N/A	N/A	N/A	N/A	N/A	480	3Φ	60	4	15	250,000	25	10	180	160	TRANE	TWED90M400	1, 2
AHU-2	WARE HOUSE	CABINET	3,000	375	1.25"	1.5	N/A	N/A	N/A	N/A	N/A	N/A	480	3Φ	60	4	15	250,000	25	10	180	160	TRANE	TWED90M400	1, 2

REMARKS:
1. NEW AIR HANDLING UNIT IS EQUIPED WITH A DX COOLING COIL TO ALLOW FOR FUTURE AIR CONDITIONING.
2. PROVIDE HOT WATER COIL TO BE MOUNTED ON THE DISCHARGE SIDE OF THE AIR HANDLING UNIT. SEE HEATING DATA IN SCHEDULE FOR PERFORMANCE CHARACTERISTICS.

STEAM TO HOT WATER PUMPING PACKAGE																						
MARK	WATER SIDE				STEAM SIDE		EXPANSION TANK (TACO MODEL C X-30)				AIR SEPARATOR		WATER HEATER							REMARKS		
	G.P.M.	EWI °F	LWT °F	BTU/HR	INITIAL PRESSURE	SAT. STEAM TEMP °F	GAL.	DIM. (IN)	ACCEPTANCE VOL./TANK	WATERLOGGED WEIGHT/TANK (LB)	ASME PRESS. RATING (psig)	SIZE (IN)	STRAINER MODEL	TACO MODEL	G.P.M.	EWI °F	LWT °F					
HTX-1	50	160	180	487.92	5 PSI	227.16	8	14x22	5	82	125	2 1/2	AC25F	HXH-125-C-430H-SSCS	16	40	140					
PUMPS SCHEDULE (PART OF PACKAGE)																						
MARK	CONDENSATE PUMP					HOT WATER PUMP					DESIGN BASIS WAS A PUMP-FLOW MODEL HW DUPLEX PUMPING PACKAGE, COMPLETE WITH SHELL AND TUBE HEAT EXCHANGER, STEAM WATER HEATER, STEAM CONTROL VALVES, CHEMICAL FEEDER, PUMPS, AIR SEPARATOR, AND CONTROLS. ALL COMPONENTS ARE PRE-PIPED AND WIRED AND ARE MOUNTED ON A STRUCTURAL FRAME WITH A SINGLE POINT POWER CONNECTION. THIS SYSTEM SHALL BE ETL CERTIFYING COMPLIANCE WITH UL778, UL508, AND USS08A STANDARDS AS A COMPLETE PACKAGE.											
	SHIPCO MODEL	G.P.M.	COND. TEMP °F	HP	NPSH	MARK	TACO MODEL	G.P.M.	HEAD (FT)	HP												RPM
PUMP-1 PUMP-2	120ECD-P	15	210	1/2	2	PUMP-3 PUMP-4	KV-1507	50	40	1 1/2	1750											
ELECTRICAL REQUIREMENTS																						
												VOLTS	PHASE	MCA	MOCP							
												480	3ø	10	15							



				DESIGNED	RDM
				DRAWN	RDM
				CHECKED	
3	RECORD DRAWING	JAN 2006		PROJ. ENGR.	
2	CONSTRUCTION	JAN 2004			
1	REGULATORY APPROVAL	NOV 2003			
NO.	ISSUED FOR	DATE	BY	APPROVED	

RECORD DRAWING	
THIS DOCUMENT ORIGINALLY ISSUED FOR CONSTRUCTION AND SEALED BY M. GINGER SCOGGINS, SEAL NUMBER 0402 033234. THIS MEDIA SHALL NOT BE CONSIDERED A CERTIFIED DOCUMENT	<div>EDI</div> <div>Engineered Designs, Inc.</div> <div>1011 Schaub Dr. Suite 201</div> <div>Raleigh, North Carolina 27606</div> <div>Office: 919.851.8481</div> <div>Fax: 919.851.9703</div>

CITY OF ROANOKE VIRGINIA	
<div>Hazen and Sawyer</div> <div>Environmental Engineers & Scientists</div> <div>4011 WestChase Blvd, Raleigh, North Carolina 27607</div>	<div>REGIONAL WATER POLLUTION CONTROL PLANT</div> <div>ADMINISTRATION AND MAINTENANCE BUILDINGS</div>

MAINTENANCE BUILDING MECHANICAL SCHEDULES AND DETAILS	
<div>THE SCALE BAR SHOWN BELOW MEASURES ONE INCH LONG ON THE ORIGINAL DRAWING.</div>	<div>DATE JANUARY 2004</div> <div>H & S JOB NUMBER 30788C</div> <div>CONTRACT NUMBER C</div> <div>DRAWING NUMBER M963</div>