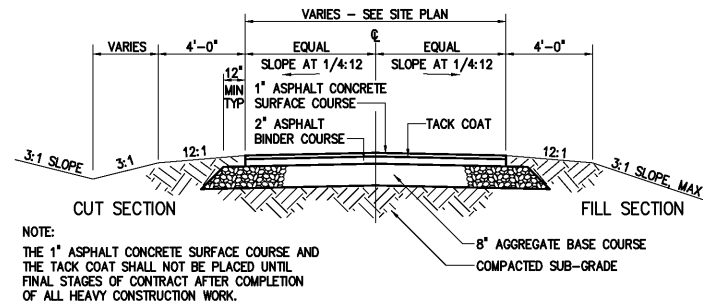
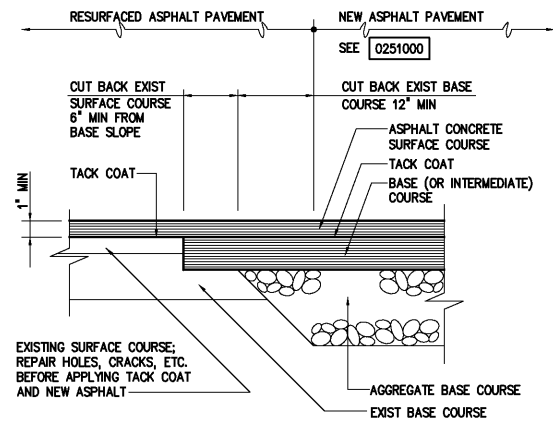


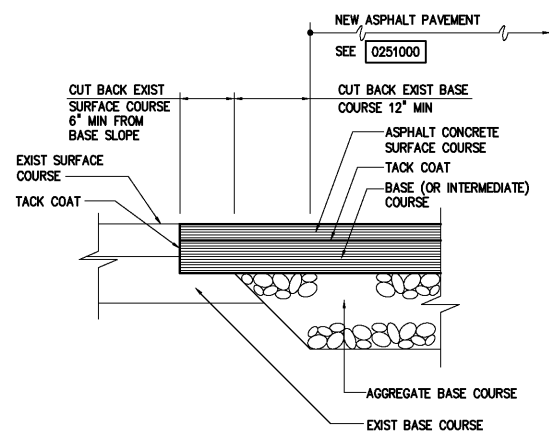
TYPICAL ROADWAY SECTION
0251004R



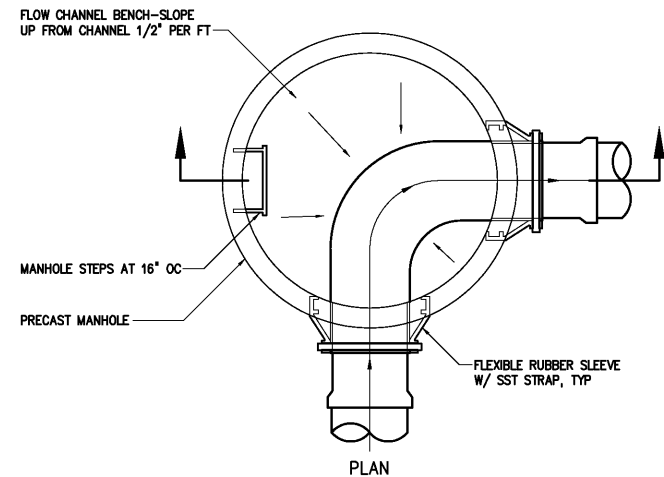
TYPICAL ROADWAY SECTION
0251000



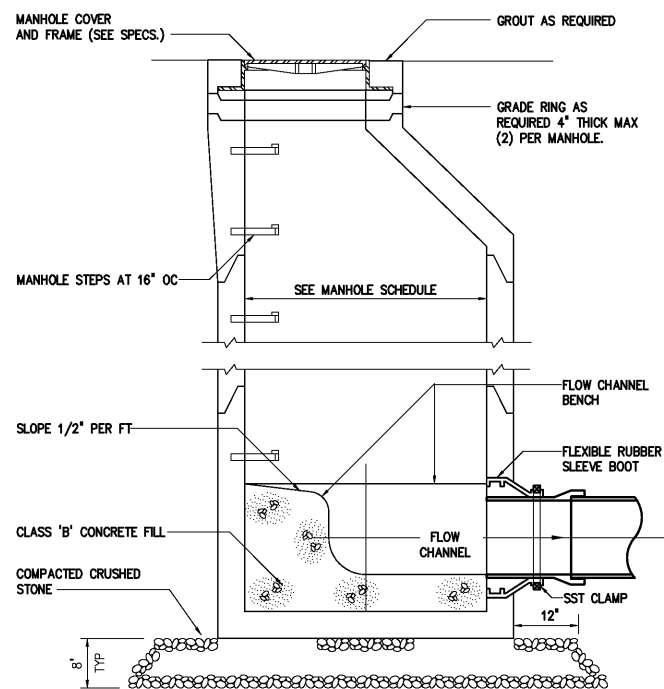
TYPICAL PAVEMENT JUNCTION WITH
RESURFACING OF EXISTING PAVEMENT
0251300



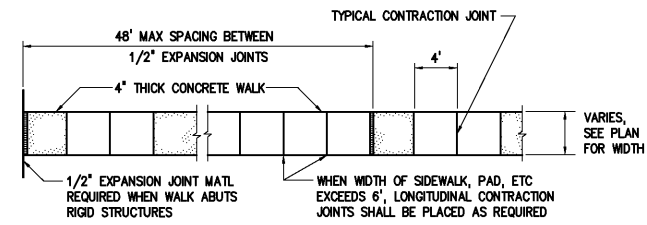
TYPICAL PAVEMENT JUNCTION
0251301



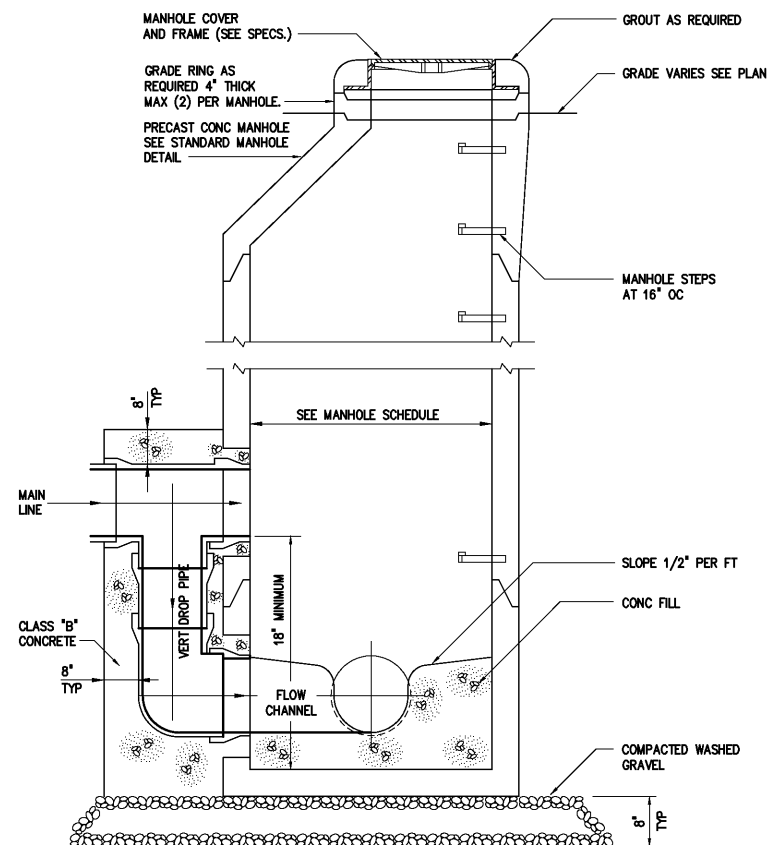
PLAN
0260100



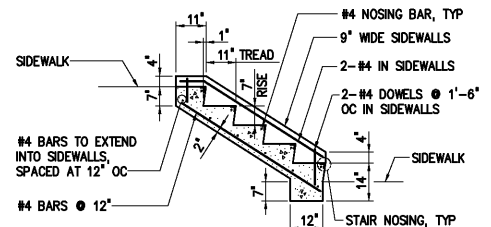
SECTION
0260101



TYPICAL CONCRETE WALKWAY
0245000



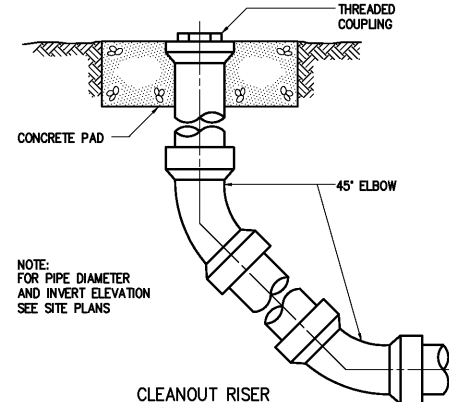
DROP MANHOLE
0260109



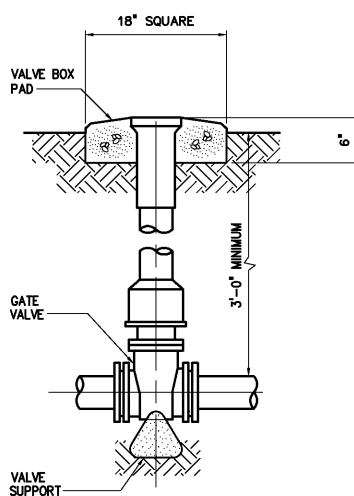
NOTE: YARD STEPS HAVING MORE THAN THREE RISERS SHALL HAVE HANDRAILS IN THE SIDEWALKS. THE WIDTH OF THE YARD STEPS TREAD SHALL BE THE SAME AS THE ADJACENT SIDEWALK.

WHERE VERTICAL DIFFERENCE BETWEEN SIDEWALK ELEVATIONS IS GREATER THAN 12'-0", AN INTERMEDIATE LANDING IS REQUIRED, SEE DETAIL.

CONCRETE YARD STEPS
0245001



CLEANOUT RISER
1542400R



VALVE BOX
0264000

				DESIGNED	H & S
				DRAWN	H & S
				CHECKED	
3	RECORD DRAWING	JAN 2006	RLT	PROJ. ENGR.	H & S
2	CONSTRUCTION	JAN 2004	RLT		
1	REGULATORY APPROVAL	NOV 2003	RLT		
NO.	ISSUED FOR	DATE	BY	APPROVED	

THIS DOCUMENT ORIGINALLY ISSUED FOR CONSTRUCTION AND SEALED BY ROBERT S. DIFIORE, SEAL NO. 22769

RECORD DRAWING

THIS DRAWING HAS BEEN MODIFIED TO REFLECT FIELD CHANGES REPORTED BY THE CONTRACTOR OR ANOTHER PARTY, BUT NOT VERIFIED BY THE CERTIFYING ENGINEER. THIS DOCUMENT ORIGINALLY ISSUED AND SEALED BY DAVID A. NAILOR, 025465. THIS MEDIA SHALL NOT BE CONSIDERED A CERTIFIED DOCUMENT.

THIS DOCUMENT ORIGINALLY ISSUED FOR CONSTRUCTION AND SEALED BY RONALD L. TAYLOR, SEAL NO. 024649

HAZEN AND SAWYER
Environmental Engineers & Scientists
4011 WestChase Blvd, Raleigh, North Carolina 27607

CITY OF ROANOKE
VIRGINIA
REGIONAL WATER POLLUTION CONTROL PLANT
PROCESS TRAIN IMPROVEMENTS

MISCELLANEOUS STANDARD DETAILS

THE SCALE BAR SHOWN BELOW MEASURES ONE INCH LONG ON THE ORIGINAL DRAWING.	DATE	JANUARY 2004
	H & S JOB NUMBER	30788C
	CONTRACT NUMBER	C
	DRAWING NUMBER	D6