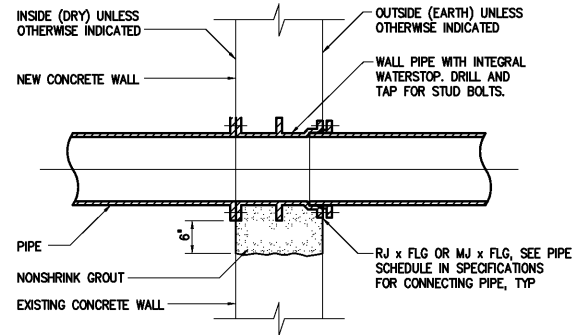
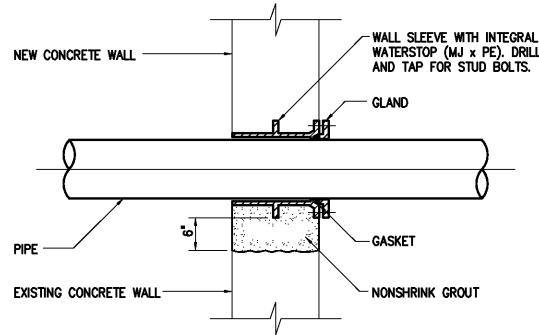


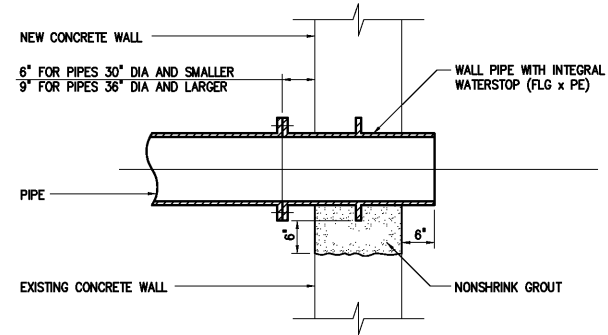
FLOOR PENETRATION
1509200



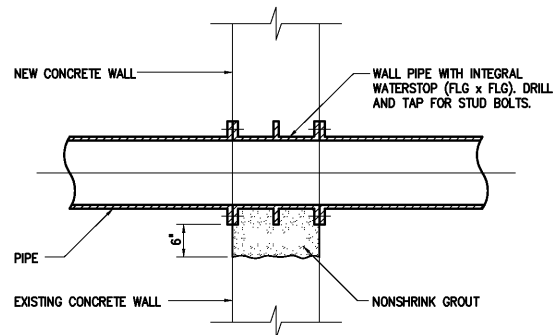
1509203



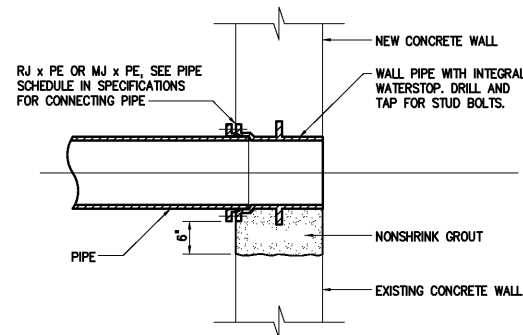
1509206



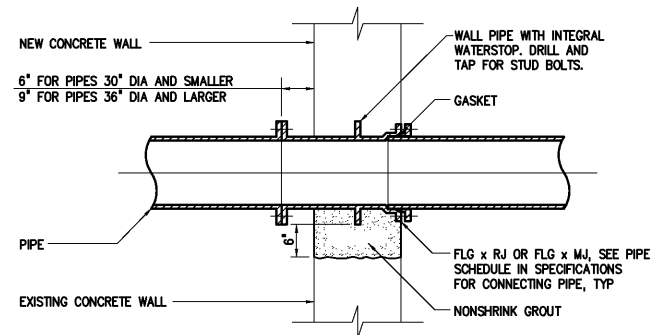
1509209



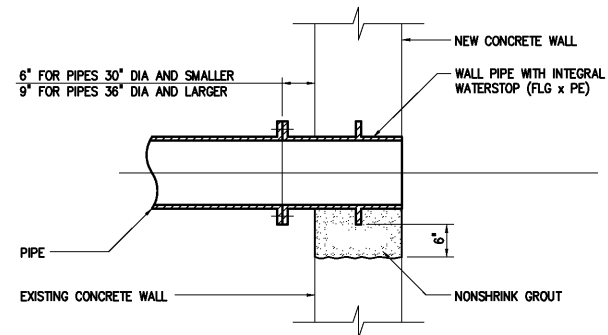
1509201



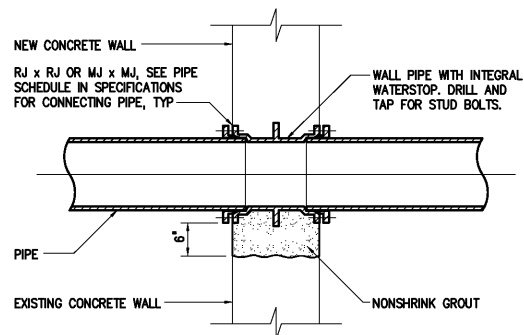
1509204



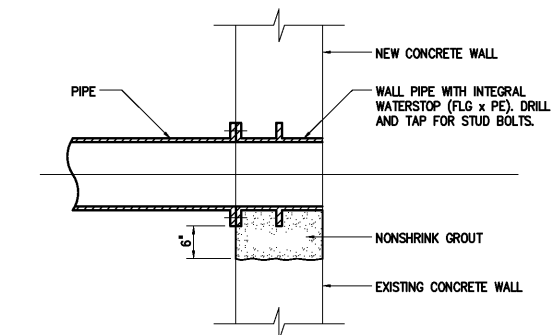
1509207



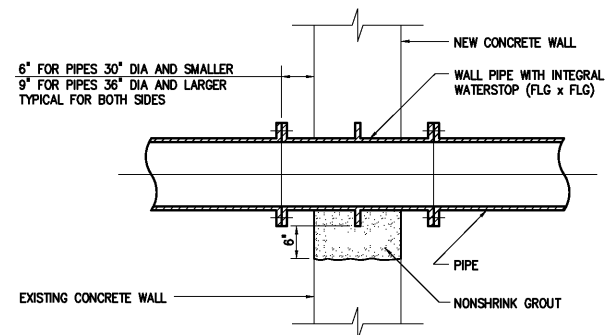
1509210



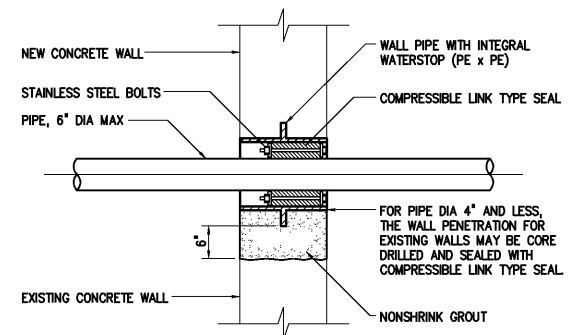
1509202



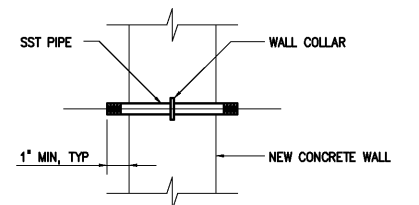
1509205



1509208



1509211



1509212

NOTES:

- 1 ALL WALL PIPES SHALL BE CAST UNLESS OTHERWISE NOTED.
- 2 PROVIDE PIPE JOINT WITHIN TWO (2) FEET OF EXTERIOR FACE OF WALL AT CONNECTION TO ALL NEW AND EXISTING STRUCTURES OR MANHOLES.
- 3 COMBINATION WATERSTOP SHALL BE REQUIRED AT ALL NEW PIPE PENETRATIONS THROUGH EXISTING CONCRETE WALLS UNLESS OTHERWISE INDICATED ON THE CONTRACT DRAWINGS. SEE COMBINATION WATERSTOP DETAIL 1509222.
- 4 ALL NEW OPENINGS IN EXISTING CONCRETE WALLS SHALL BE ACCOMPLISHED WITH A CLEAN SAW-CUT. SURFACES SHALL BE ROUGHENED BY APPROVED METHODS.

				DESIGNED	H & S
				DRAWN	H & S
				CHECKED	
3	RECORD DRAWING	JAN 2006	RLT	PROJ. ENGR.	H & S
2	CONSTRUCTION	JAN 2004	RLT		
1	REGULATORY APPROVAL	NOV 2003	RLT		
NO.	ISSUED FOR	DATE	BY	APPROVED	

THIS DOCUMENT ORIGINALLY ISSUED FOR CONSTRUCTION AND SEALED BY ROBERT S. DIFIORE, SEAL NO. 22769

RECORD DRAWING

THIS DRAWING HAS BEEN MODIFIED TO REFLECT FIELD CHANGES REPORTED BY THE CONTRACTOR OR ANOTHER PARTY, BUT NOT VERIFIED BY THE CERTIFYING ENGINEER. THIS DOCUMENT ORIGINALLY ISSUED AND SEALED BY DAVID A. NAILOR, 025465. THIS MEDIA SHALL NOT BE CONSIDERED A CERTIFIED DOCUMENT.

THIS DOCUMENT ORIGINALLY ISSUED FOR CONSTRUCTION AND SEALED BY RONALD L. TAYLOR, SEAL NO. 024649

HAZEN AND SAWYER
Environmental Engineers & Scientists
4011 WestChase Blvd, Raleigh, North Carolina 27607

CITY OF ROANOKE
VIRGINIA

REGIONAL WATER POLLUTION CONTROL PLANT
PROCESS TRAIN IMPROVEMENTS

MISCELLANEOUS STANDARD DETAILS

THE SCALE BAR SHOWN BELOW MEASURES ONE INCH LONG ON THE ORIGINAL DRAWING.	DATE	JANUARY 2004
	H & S JOB NUMBER	30788C
	CONTRACT NUMBER	C
	DRAWING NUMBER	D10