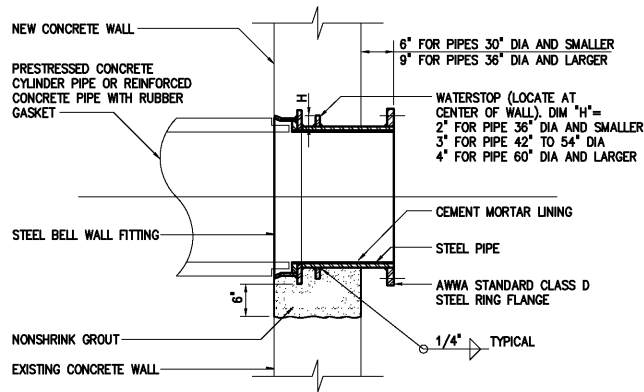
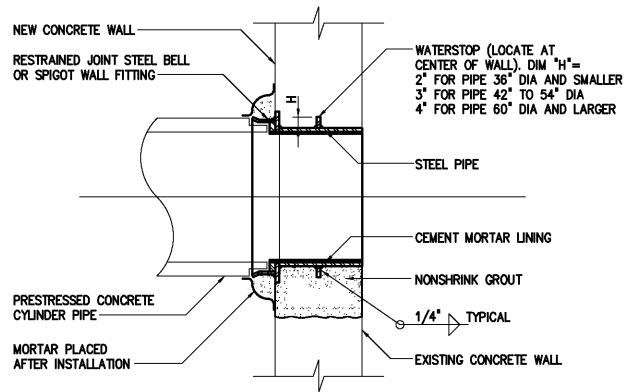


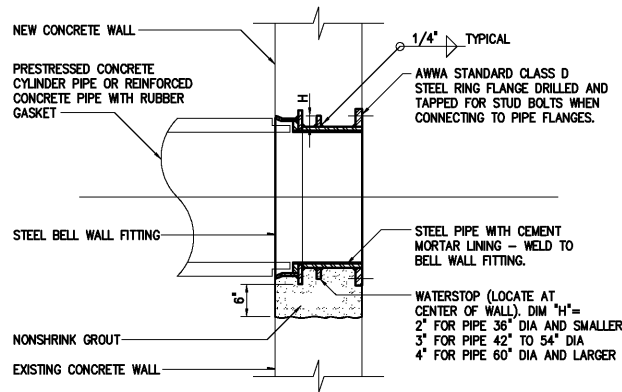
1509213



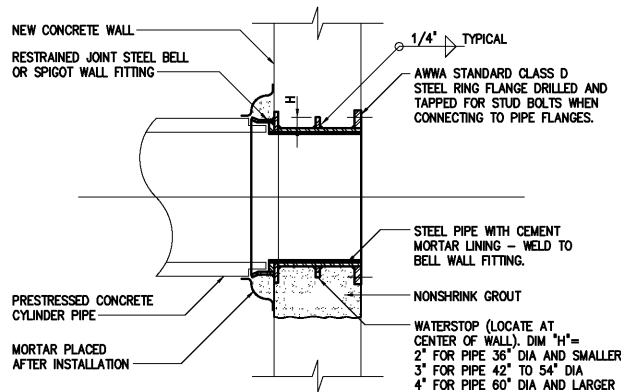
1509226



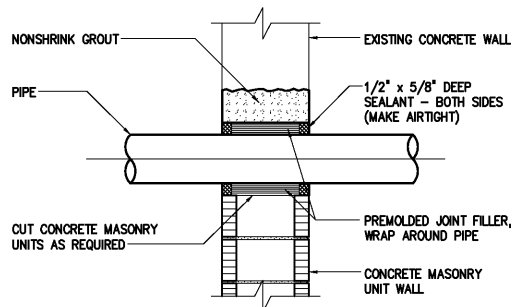
1509229



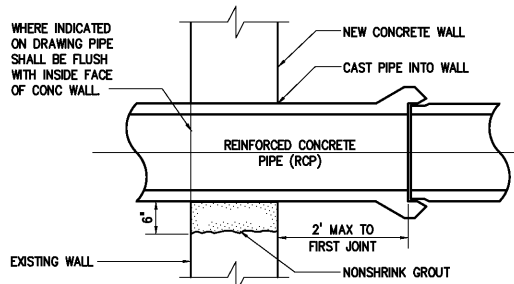
1509214



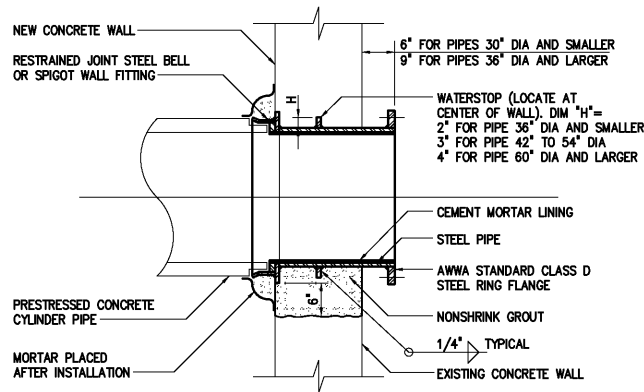
1509227



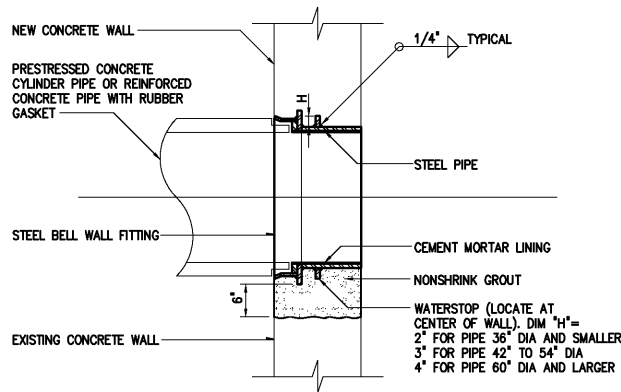
CAULKED WALL PENETRATION
1509217



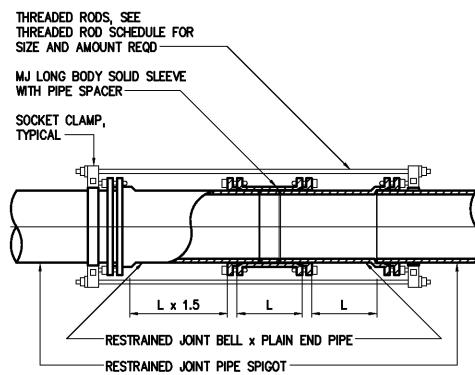
REINFORCED CONCRETE PIPE
WALL PENETRATION
1509218



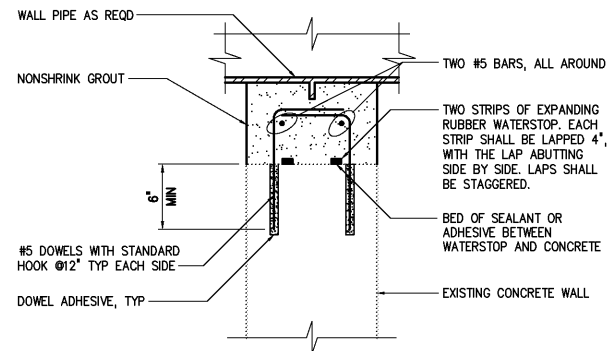
1509215



1509228



RESTRAINED MJ SOLID SLEEVE
1509221



NOTES:
ALL OPENINGS SHALL BE SAWCUT OR (SINGLE) CORE DRILLED AS REQUIRED.
USE OF JACKHAMMERS OR STITCH DRILLING IS NOT PERMITTED. THE PERIMETER
SURFACE OF THE OPENING SHALL BE SMOOTH.

WATERSTOP
1509222

- NOTES:
- 1 ALL WALL PIPES SHALL BE CAST UNLESS OTHERWISE NOTED.
 - 2 PROVIDE PIPE JOINT WITHIN TWO (2) FEET OF EXTERIOR FACE OF WALL AT CONNECTION TO ALL NEW AND EXISTING STRUCTURES OR MANHOLES.
 - 3 COMBINATION WATERSTOP SHALL BE REQUIRED AT ALL NEW PIPE PENETRATIONS THROUGH EXISTING CONCRETE WALLS UNLESS OTHERWISE INDICATED ON THE CONTRACT DRAWINGS. SEE COMBINATION WATERSTOP DETAIL 1509222.
 - 4 ALL NEW OPENINGS IN EXISTING CONCRETE WALLS SHALL BE ACCOMPLISHED WITH A CLEAN SAW-CUT. SURFACES SHALL BE ROUGHENED BY APPROVED METHODS.

				DESIGNED	H & S
				DRAWN	H & S
				CHECKED	
3	RECORD DRAWING	JAN 2006	RLT	PROJ. ENGR.	H & S
2	CONSTRUCTION	JAN 2004	RLT		
1	REGULATORY APPROVAL	NOV 2003	RLT		
NO.	ISSUED FOR	DATE	BY	APPROVED	

THIS DOCUMENT ORIGINALLY ISSUED
FOR CONSTRUCTION AND SEALED BY
ROBERT S. DIFIORE, SEAL NO. 22769

RECORD DRAWING

THIS DRAWING HAS BEEN MODIFIED TO REFLECT FIELD
CHANGES REPORTED BY THE CONTRACTOR OR ANOTHER
PARTY, BUT NOT VERIFIED BY THE CERTIFYING ENGINEER.
THIS DOCUMENT ORIGINALLY ISSUED AND SEALED BY
DAVID A. NAILOR, 025465. THIS MEDIA SHALL NOT BE
CONSIDERED A CERTIFIED DOCUMENT.

THIS DOCUMENT ORIGINALLY ISSUED
FOR CONSTRUCTION AND SEALED BY
RONALD L. TAYLOR, SEAL NO. 024649

HAZEN AND SAWYER
Environmental Engineers & Scientists
4011 WestChase Blvd, Raleigh, North Carolina 27607

CITY OF ROANOKE
VIRGINIA

REGIONAL WATER POLLUTION CONTROL PLANT
PROCESS TRAIN IMPROVEMENTS

MISCELLANEOUS STANDARD DETAILS

THE SCALE BAR SHOWN BELOW MEASURES ONE INCH LONG ON THE ORIGINAL DRAWING.	DATE JANUARY 2004 H & S JOB NUMBER 30788C CONTRACT NUMBER C DRAWING NUMBER D11
--	--