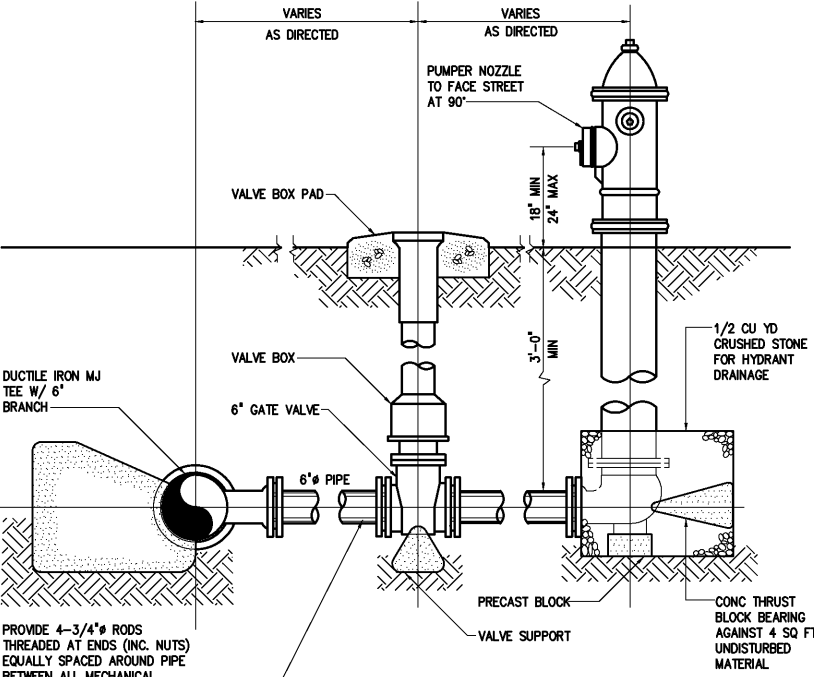


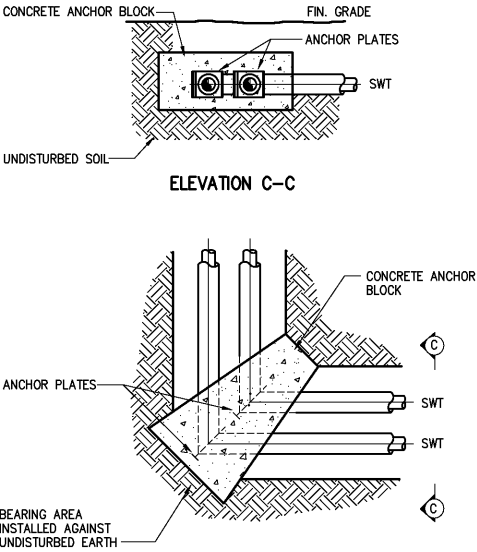
EMERGENCY SHOWER AND EYEWASH
1545100

THREADED ROD SCHEDULE												
DESIGN PRESSURE (DIMENSIONS IN INCHES)												
PIPE SIZE	50 PSI	100 PSI	150 PSI	200 PSI	250 PSI	300 PSI	350 PSI					
	BOLTS NO-DIA	TAB THK	BOLTS NO-DIA	TAB THK	BOLTS NO-DIA	TAB THK	BOLTS NO-DIA	TAB THK	BOLTS NO-DIA	TAB THK	BOLTS NO-DIA	TAB THK
4,6	2-3/4	1	2-3/4	1	2-3/4	1	2-3/4	1	2-3/4	1	2-3/4	1
8	2-3/4	1 1/4	2-3/4	1 1/4	2-3/4	1 1/4	2-3/4	1 1/4	4-3/4	1 1/4	4-3/4	1 1/4
10	2-3/4	1 1/4	2-3/4	1 1/4	2-3/4	1 1/4	4-3/4	1 1/4	4-3/4	1 1/4	4-3/4	1 1/4
12	2-3/4	1 1/4	2-3/4	1 1/4	4-3/4	1 1/4	6-3/4	1 1/4	6-3/4	1 1/4	6-3/4	1 1/4
14	2-3/4	1 1/2	4-3/4	1 1/2	4-3/4	1 1/2	4-3/4	1 1/2	4-3/4	1 1/2	4-3/4	1 1/2
16	2-3/4	1 1/2	4-3/4	1 1/2	6-3/4	1 1/2	4-3/4	1 1/2	4-3/4	1 1/2	6-3/4	1 1/2
18	2-3/4	1 3/4	4-3/4	1 3/4	6-3/4	1 3/4	4-3/4	1 3/4	6-3/4	1 3/4	6-3/4	1 3/4
20	4-3/4	1 3/4	4-3/4	1 3/4	4-3/4	1 3/4	6-3/4	1 3/4	6-3/4	1 3/4	8-3/4	1 3/4
24	4-3/4	2	4-3/4	2	6-3/4	2	6-3/4	2	10-3/4	2	10-3/4	2
30	4-1	2 1/4	4-1	2 1/4	4-1	2 1/4	8-1	2 1/4	10-1	2 1/4	10-1	2 1/4
36	4-1	2 1/2	4-1	2 1/2	6-1	2 1/2	8-1	2 1/2	10-1	2 1/2	14-1	2 1/2
42	4-1 1/4	2 3/4	4-1 1/4	2 3/4	6-1 1/4	2 3/4	8-1 1/4	2 3/4	10-1 1/4	2 3/4	12-1 1/4	2 3/4
48	6-1 1/4	2 3/4	4-1 1/4	2 3/4	8-1 1/4	2 3/4	8-1 1/4	2 3/4	12-1 1/4	2 3/4	14-1 1/4	2 3/4
54	6-1 1/4	3	6-1 1/4	3	8-1 1/4	3	12-1 1/4	3	14-1 1/4	3	18-1 1/4	3

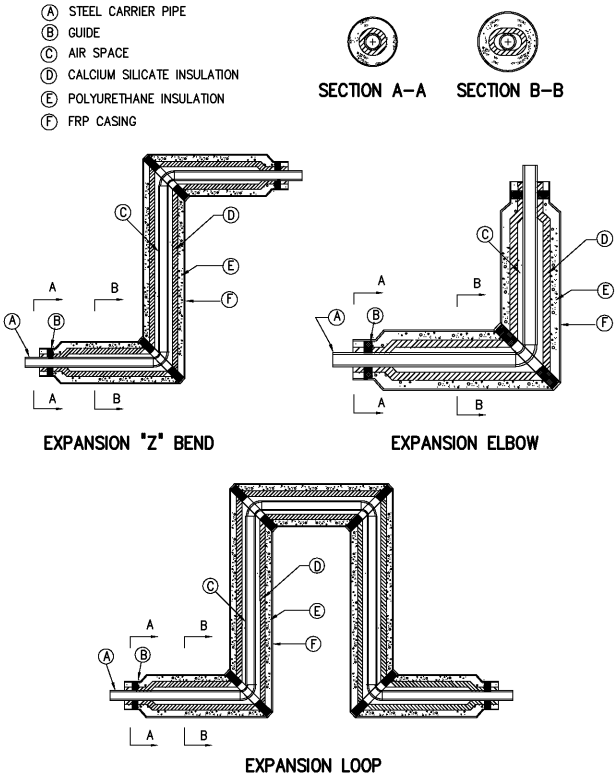
1. THREADED RODS FOR ALL PIPE DIAMETERS IN THE SHADED AREA SHALL BE ASTM A193 (GRADE B7).
2. ALL OTHER THREADED RODS SHALL BE ASTM A36. ALL TABS SHALL BE ASTM A572 GR50.
3. ASTM A193 (GRADE B7) RODS SHALL BE LABELED AND BUNDLED SEPARATELY.
4. THIS SCHEDULE SHALL APPLY FOR HARNESSSED FLANGED ADAPTERS, HARNESSSED FLEXIBLE COUPLINGS AND ALL MECHANICAL JOINT COUPLINGS, SLEEVES ETC. THAT ARE REQUIRED TO BE HARNESSSED.
5. RODS THREADED AT ENDS (INCLUDING NUTS) SHALL BE EQUALLY SPACED AROUND PIPE BETWEEN ALL MECHANICAL JOINT FITTINGS (TEE, VALVES, BEND, PLUG, ETC.) OR AS OTHERWISE SHOWN ON THE CONTRACT DRAWINGS. THREADED RODS SHALL BE AS SHOWN IN THE THREADED ROD SCHEDULE. SEE NOTE 6.
6. RODS, NUTS, ETC., IN CONTACT WITH SOIL SHALL BE PAINTED WITH TWO COATS COAL TAR (MIN 26 DRY MIL THICKNESS) TNEC 46-465 HI-BUILD OR EQUAL.



FIRE HYDRANT
1553000

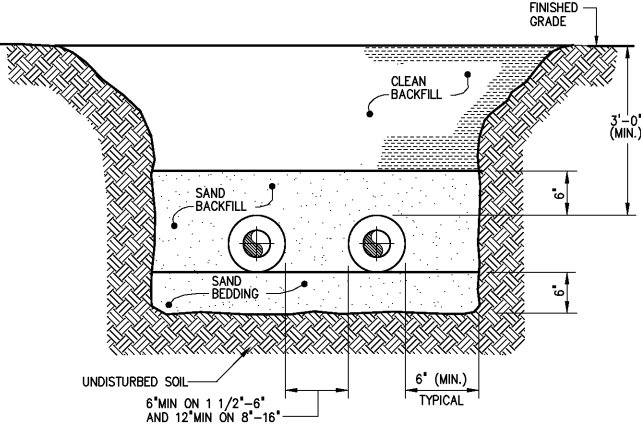


TYPICAL ANCHOR BLOCK AT 90° ELBOWS

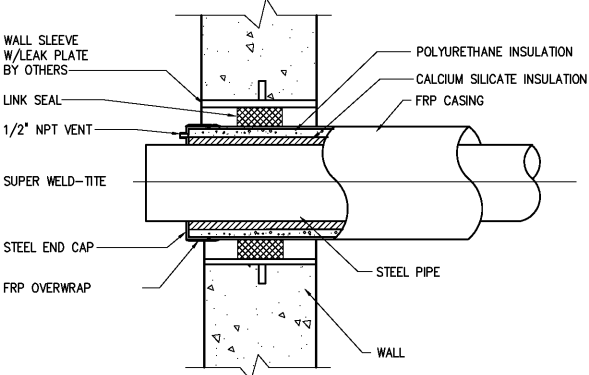


PRE-INSULATED SUPER WELD-TITE EXPANSION FITTINGS

STEAM PIPING DETAILS
NOT TO SCALE



TYPICAL TRENCH SECTION



WALL PENETRATION

				DESIGNED	H & S
				DRAWN	H & S
				CHECKED	
3	RECORD DRAWING	JAN 2006	RLT	PROJ. ENGR.	H & S
2	CONSTRUCTION	JAN 2004	RLT		
1	REGULATORY APPROVAL	NOV 2003	RLT		
NO.	ISSUED FOR	DATE	BY	APPROVED	

RECORD DRAWING	
THIS DOCUMENT ORIGINALLY ISSUED FOR CONSTRUCTION AND SEALED BY ROBERT S. DIFIORE, SEAL NO. 22769	THIS DRAWING HAS BEEN MODIFIED TO REFLECT FIELD CHANGES REPORTED BY THE CONTRACTOR OR ANOTHER PARTY, BUT NOT VERIFIED BY THE CERTIFYING ENGINEER. THIS DOCUMENT ORIGINALLY ISSUED AND SEALED BY DAVID A. NAILOR, 025465. THIS MEDIA SHALL NOT BE CONSIDERED A CERTIFIED DOCUMENT.
THIS DOCUMENT ORIGINALLY ISSUED FOR CONSTRUCTION AND SEALED BY RONALD L. TAYLOR, SEAL NO. 024649	

Hazen and Sawyer Environmental Engineers & Scientists 4011 WestChase Blvd, Raleigh, North Carolina 27607	CITY OF ROANOKE VIRGINIA	
	REGIONAL WATER POLLUTION CONTROL PLANT PROCESS TRAIN IMPROVEMENTS	

MISCELLANEOUS STANDARD DETAILS	
--------------------------------	--

THE SCALE BAR SHOWN BELOW MEASURES ONE INCH LONG ON THE ORIGINAL DRAWING.	DATE JANUARY 2004
	H & S JOB NUMBER 30788C
	CONTRACT NUMBER C
	DRAWING NUMBER D13