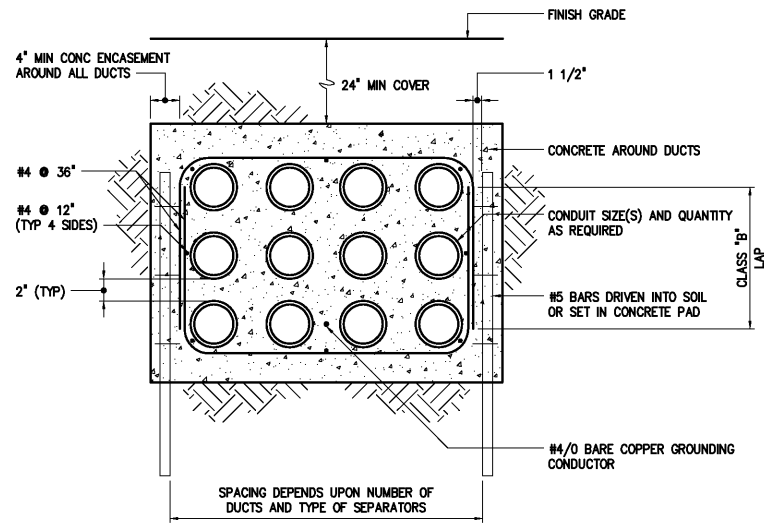
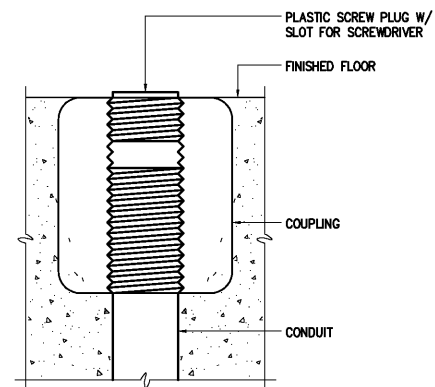


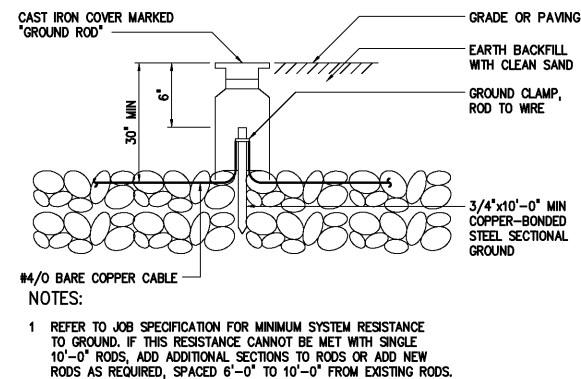
CONCRETE ENCASED GROUND
1617004



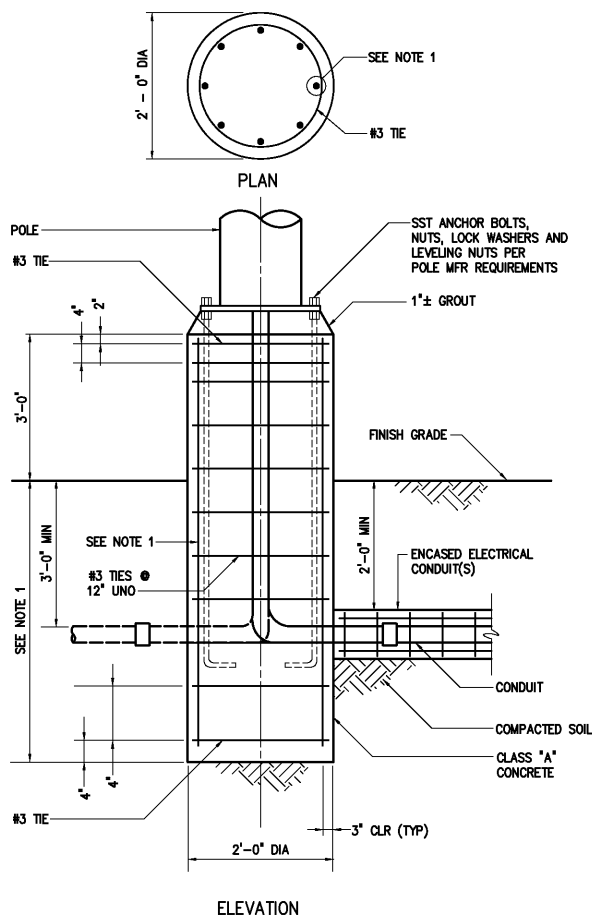
TYPICAL DUCT BANK DETAIL
1611801



CONDUIT, FLOOR STUB-UP
1611101

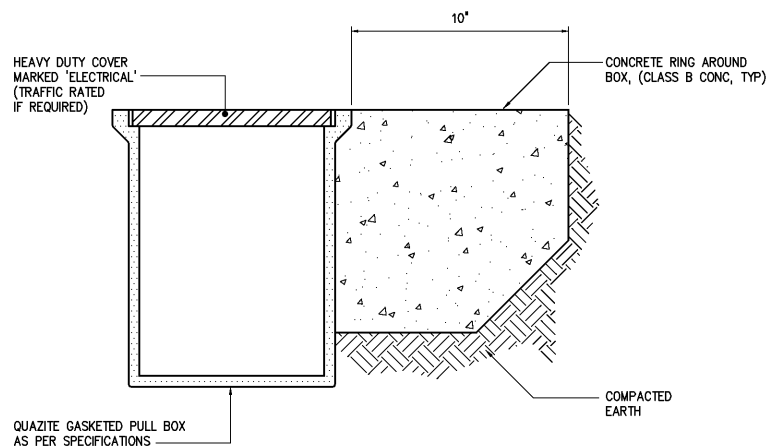


ELECTRICAL INSTALLATION DETAIL
GROUND ROD ASSEMBLY
1617003

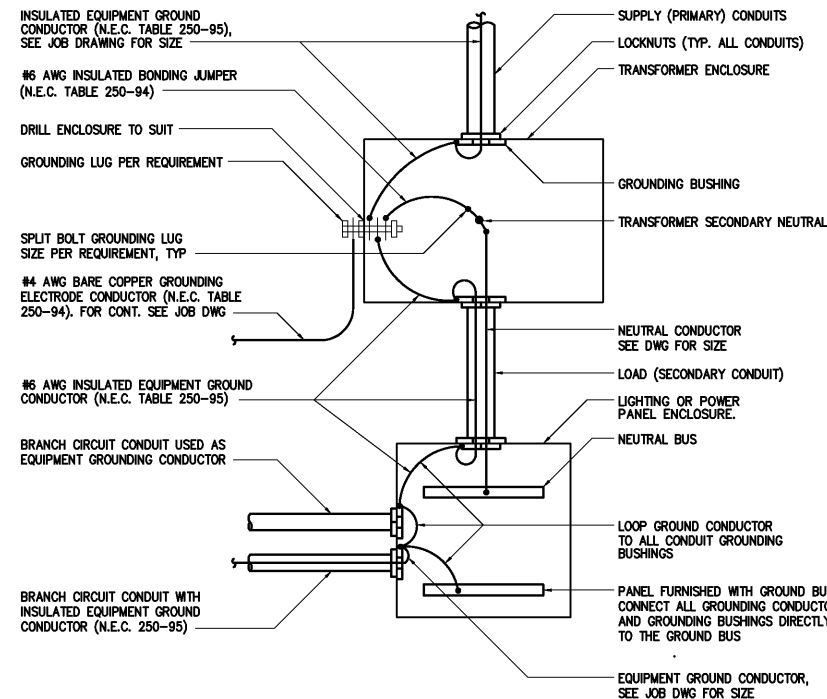


NOTES:
1 IF NOT SPECIFIED OR SHOWN, DEPTH AND REINFORCEMENT SHALL BE DETERMINED BY POLE MANUFACTURER. LOADING SHALL BE DEAD LOAD PLUS 100 MPH WIND, STANDARD EXPOSURE PER STANDARD BUILDING CODE.

AREA LIGHTING FIXTURE MOUNTING
16150002



PULL BOX AND HAND HOLE (HH) INSTALLATION DETAIL
1611803



NOTES:
1 GROUNDING CONDUCTORS SHOWN ARE FOR TRANSFORMERS UP TO 45KVA. SEE ELECT. JOB DRAWINGS FOR LARGER TRANSFORMERS OR WHEN VOLTAGE DROP REQUIRES LARGER CONDUCTORS.

LOW VOLTAGE TRANSFORMER GROUNDING INSTALLATION DETAIL
1618003

				DESIGNED	H & S	THIS DOCUMENT ORIGINALLY ISSUED FOR CONSTRUCTION AND SEALED BY ROBERT S. DIFIORE, SEAL NO. 22769	RECORD DRAWING	THIS DRAWING HAS BEEN MODIFIED TO REFLECT FIELD CHANGES REPORTED BY THE CONTRACTOR OR ANOTHER PARTY, BUT NOT VERIFIED BY THE CERTIFYING ENGINEER. THIS DOCUMENT ORIGINALLY ISSUED AND SEALED BY GERALD J. RATASKY, 026535. THIS MEDIA SHALL NOT BE CONSIDERED A CERTIFIED DOCUMENT.	HAZEN AND SAWYER Environmental Engineers & Scientists 4011 WestChase Blvd, Raleigh, North Carolina 27607	CITY OF ROANOKE VIRGINIA	REGIONAL WATER POLLUTION CONTROL PLANT PROCESS TRAIN IMPROVEMENTS	MISCELLANEOUS STANDARD DETAILS	THE SCALE BAR SHOWN BELOW MEASURES ONE INCH LONG ON THE ORIGINAL DRAWING.	DATE JANUARY 2004		H & S JOB NUMBER 30788C	CONTRACT NUMBER C	DRAWING NUMBER D14
				DRAWN	H & S													
				CHECKED														
3	RECORD DRAWING	JAN 2006	RLT	PROJ. ENGR.	H & S	THIS DOCUMENT ORIGINALLY ISSUED FOR CONSTRUCTION AND SEALED BY RONALD L. TAYLOR, SEAL NO. 024649												
2	CONSTRUCTION	JAN 2004	RLT															
1	REGULATORY APPROVAL	NOV 2003	RLT															
NO.	ISSUED FOR	DATE	BY	APPROVED														