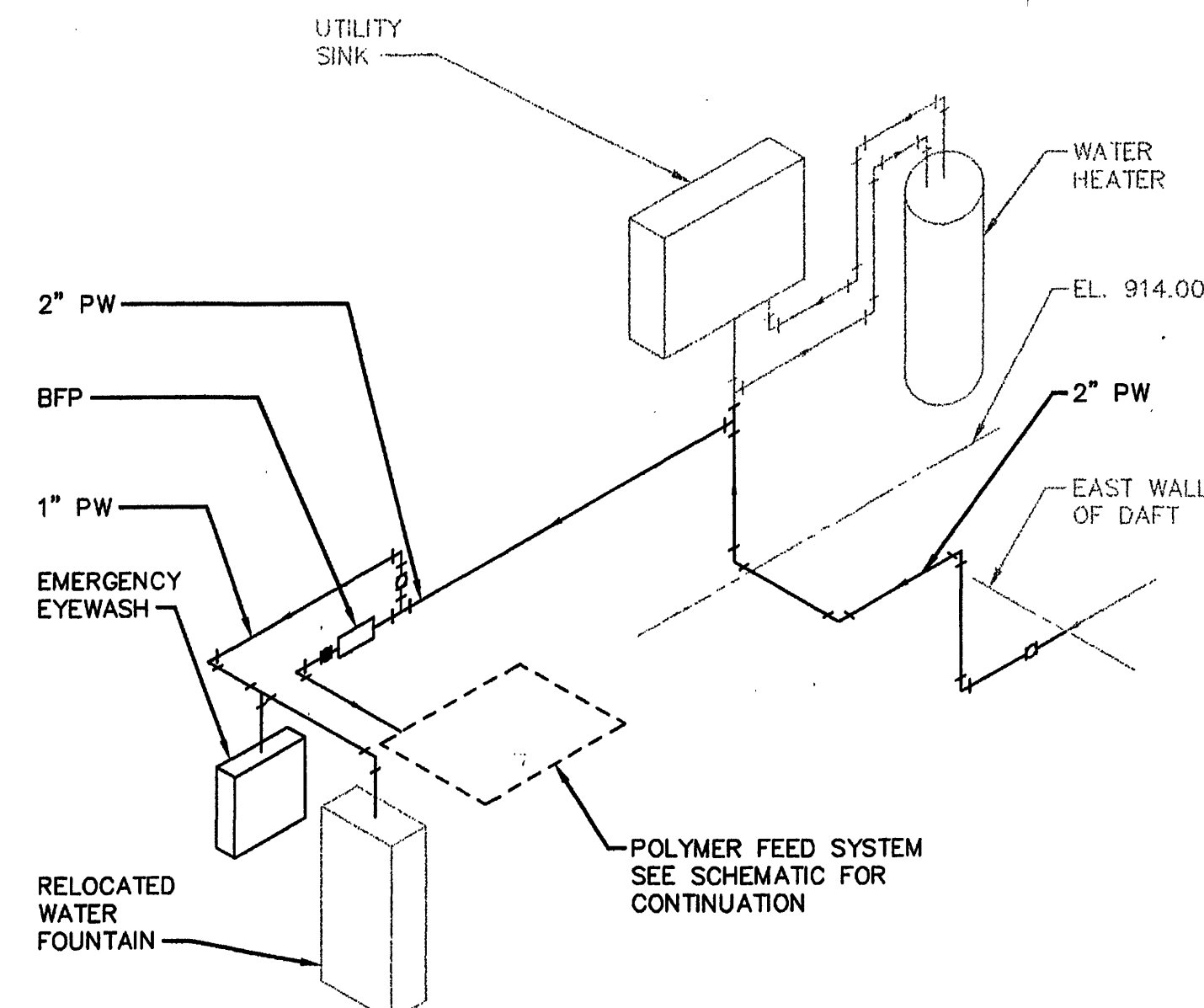
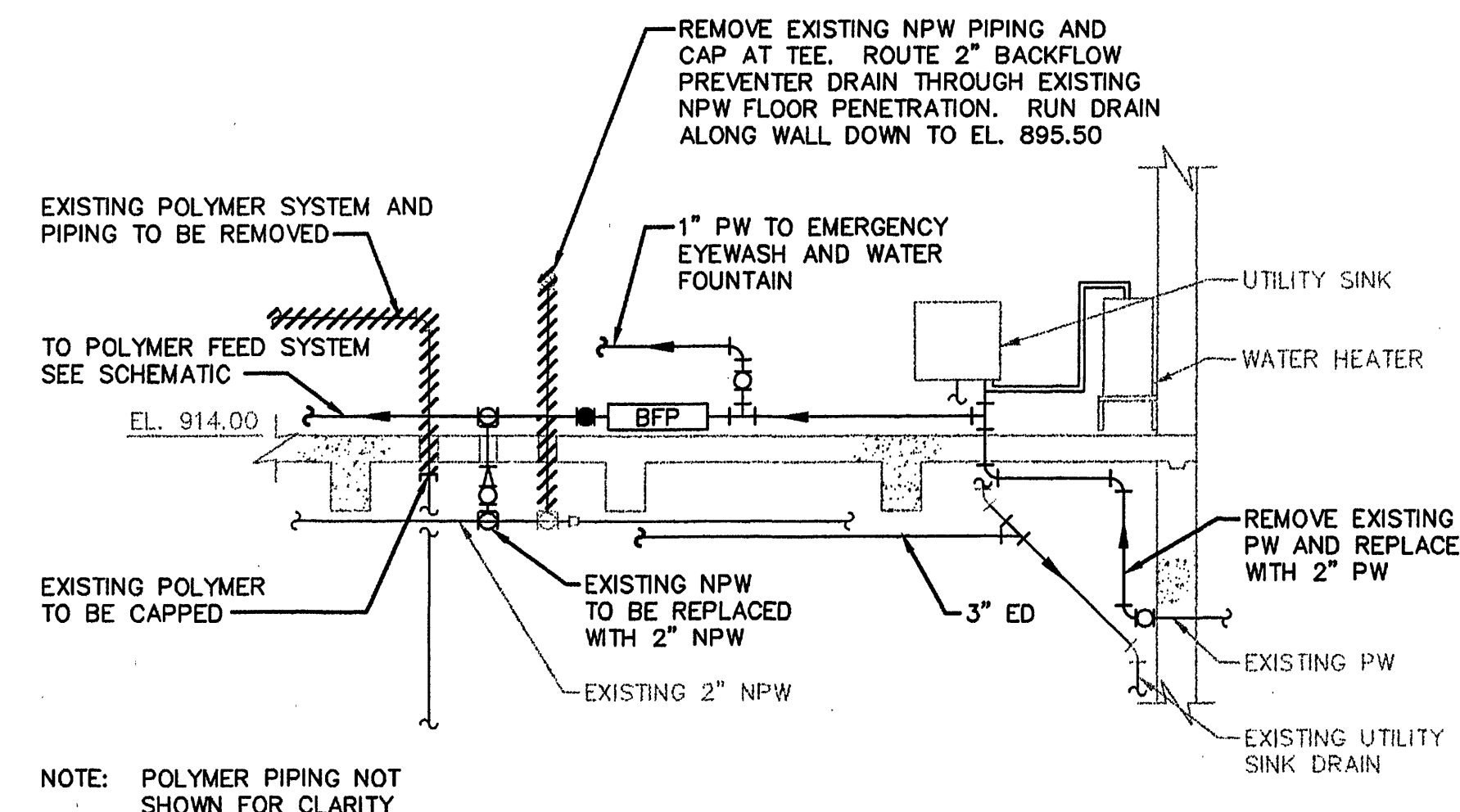


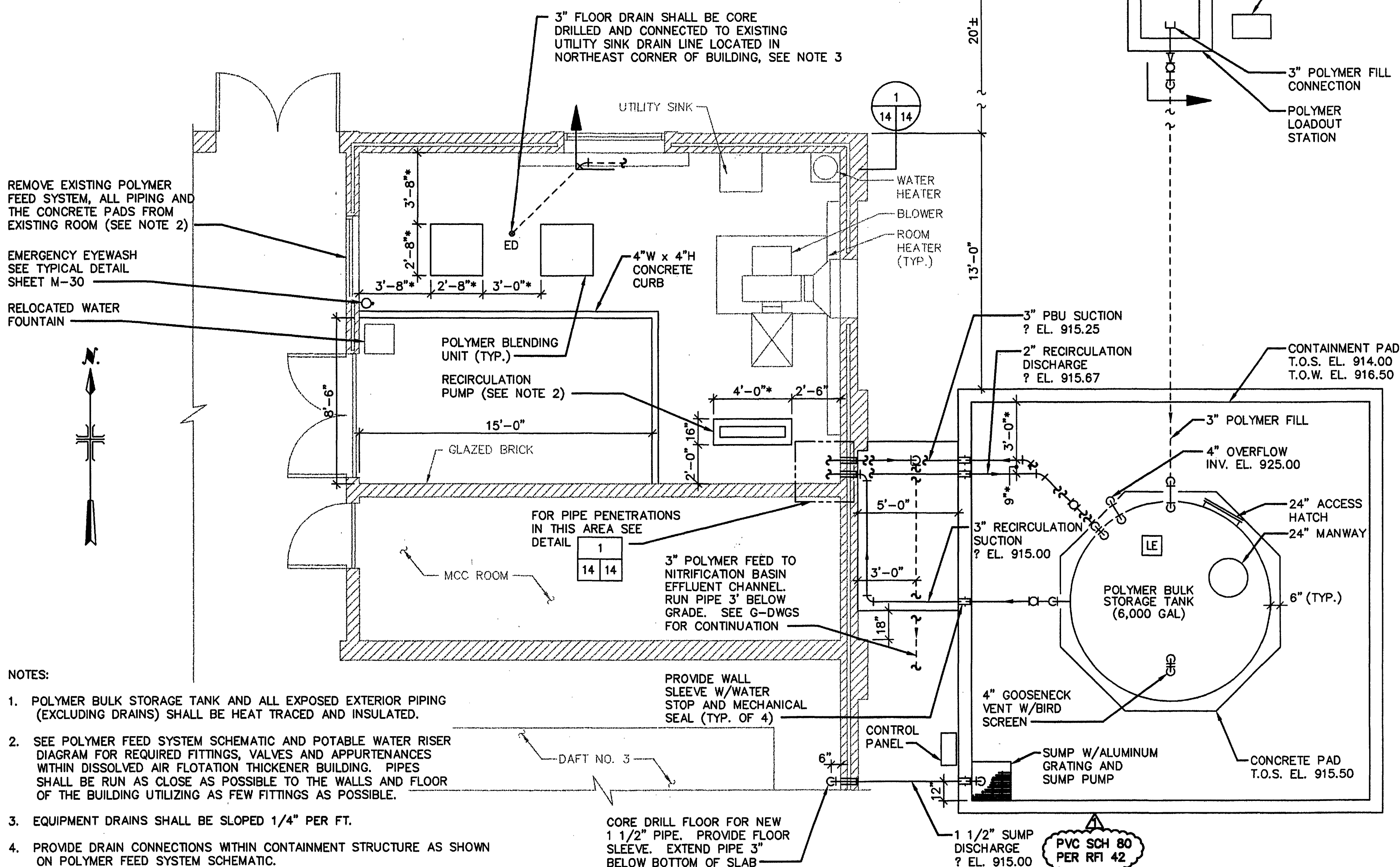
POLYMER FEED SYSTEM SCHEMATIC
NOT TO SCALE



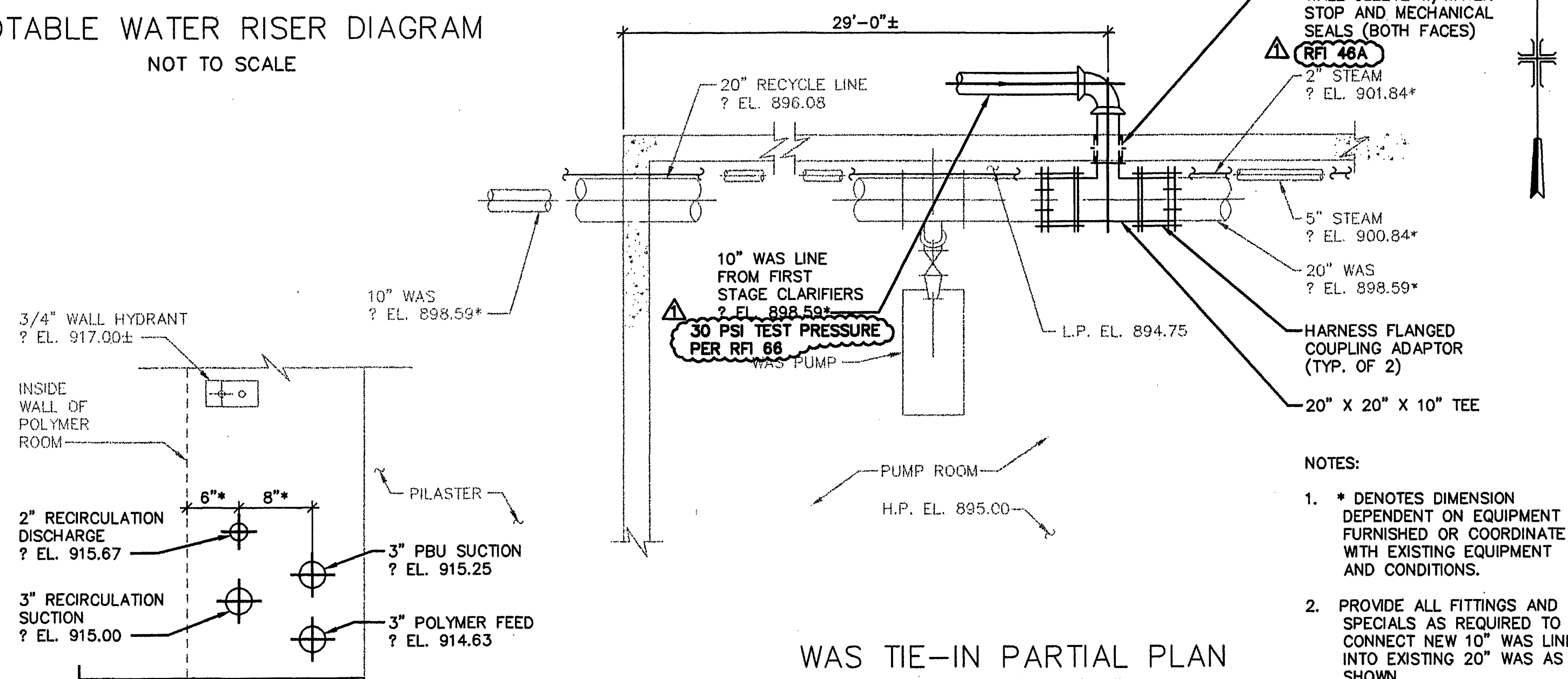
POTABLE WATER RISER DIAGRAM
NOT TO SCALE



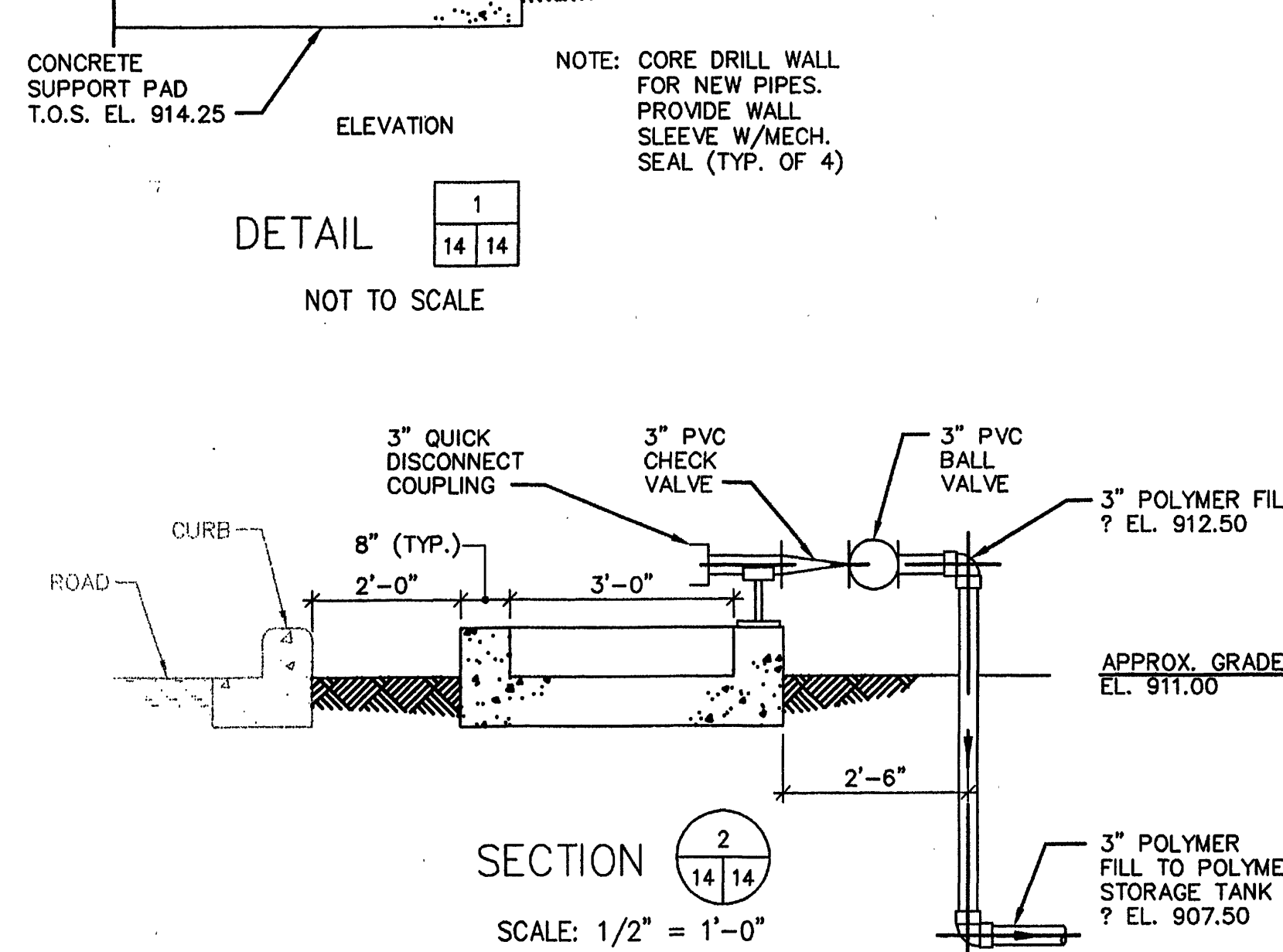
SECTION 1/14/14
NOT TO SCALE



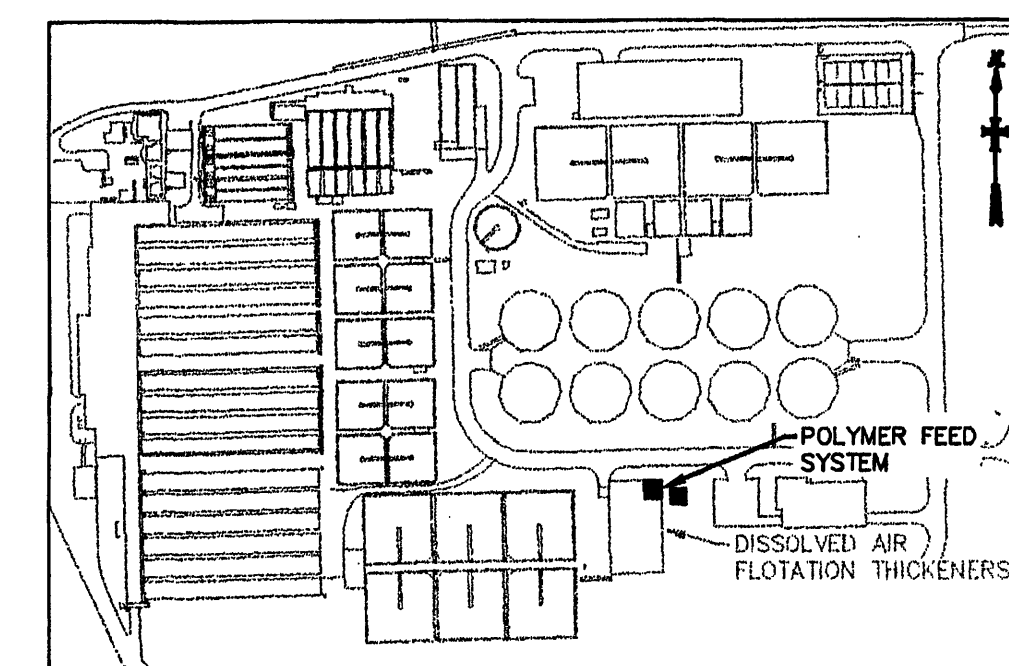
POLYMER SYSTEM PARTIAL PLAN @EL. 914.00
SCALE: 1/4" = 1'-0"



WAS TIE-IN PARTIAL PLAN
SCALE: 1/4" = 1'-0"



SECTION 2/14/14
SCALE: 1/2" = 1'-0"



KEY PLAN
NTS

- NOTES:
- POLYMER BULK STORAGE TANK AND ALL EXPOSED EXTERIOR PIPING (EXCLUDING DRAINS) SHALL BE HEAT TRACED AND INSULATED.
 - SEE POLYMER FEED SYSTEM SCHEMATIC AND POTABLE WATER RISER DIAGRAM FOR REQUIRED FITTINGS, VALVES AND APPURTENANCES WITHIN DISSOLVED AIR FLOTATION THICKENER BUILDING. PIPES SHALL BE RUN AS CLOSE AS POSSIBLE TO THE WALLS AND FLOOR OF THE BUILDING UTILIZING AS FEW FITTINGS AS POSSIBLE.
 - EQUIPMENT DRAINS SHALL BE SLOPED 1/4" PER FT.
 - PROVIDE DRAIN CONNECTIONS WITHIN CONTAINMENT STRUCTURE AS SHOWN ON POLYMER FEED SYSTEM SCHEMATIC.
 - PROVIDE DRAIN CONNECTIONS WITHIN CONTAINMENT STRUCTURE AS SHOWN ON POLYMER FEED SYSTEM SCHEMATIC.

**MALCOLM
PIRNIE**

11832 Rock Landing Drive, Suite 400
Newport News, Virginia 23606

NO.	BY	DATE	REVISIONS	REMARKS
1	ARB	JAN. 2000	RECORD DRAWING	

DES --- CWM ---
DWN MPK/WEC
CKD --- GJJ ---

ROANOKE
VIRGINIA, CHARTERED 1882

CITY OF ROANOKE, VIRGINIA WATER POLLUTION CONTROL PLANT UPGRADE AND EXPANSION

DISSOLVED AIR FLOTATION THICKENER PARTIAL PLANS, SECTIONS, DETAIL, RISER DIAGRAM AND SCHEMATIC SCALE AS NOTED

COPYRIGHT © 1997
MALCOLM PIRNIE, INC.
DATE MAY 1997
M SHEET 14 OF 30
CAD REF. NO. 0060M016