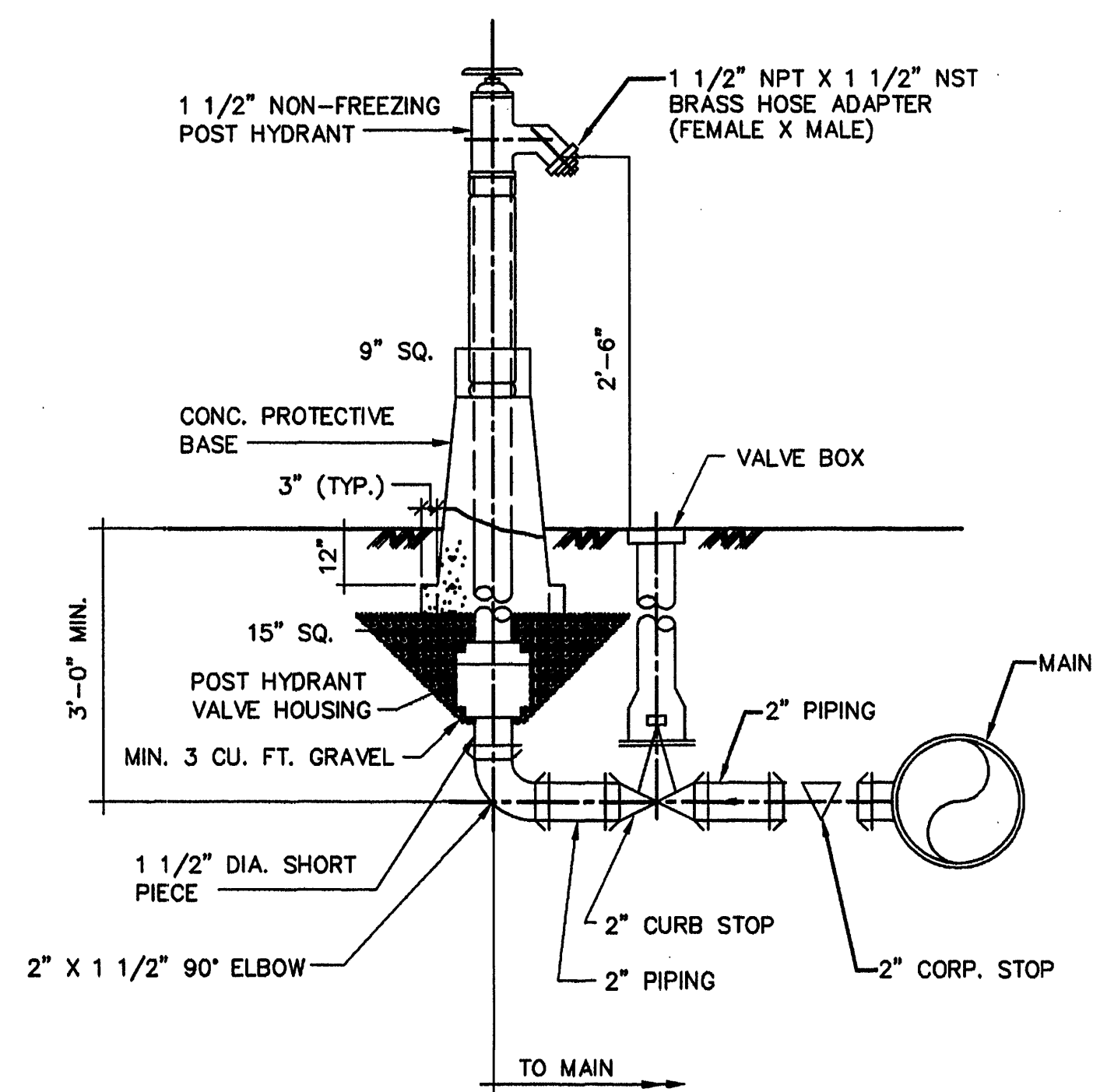
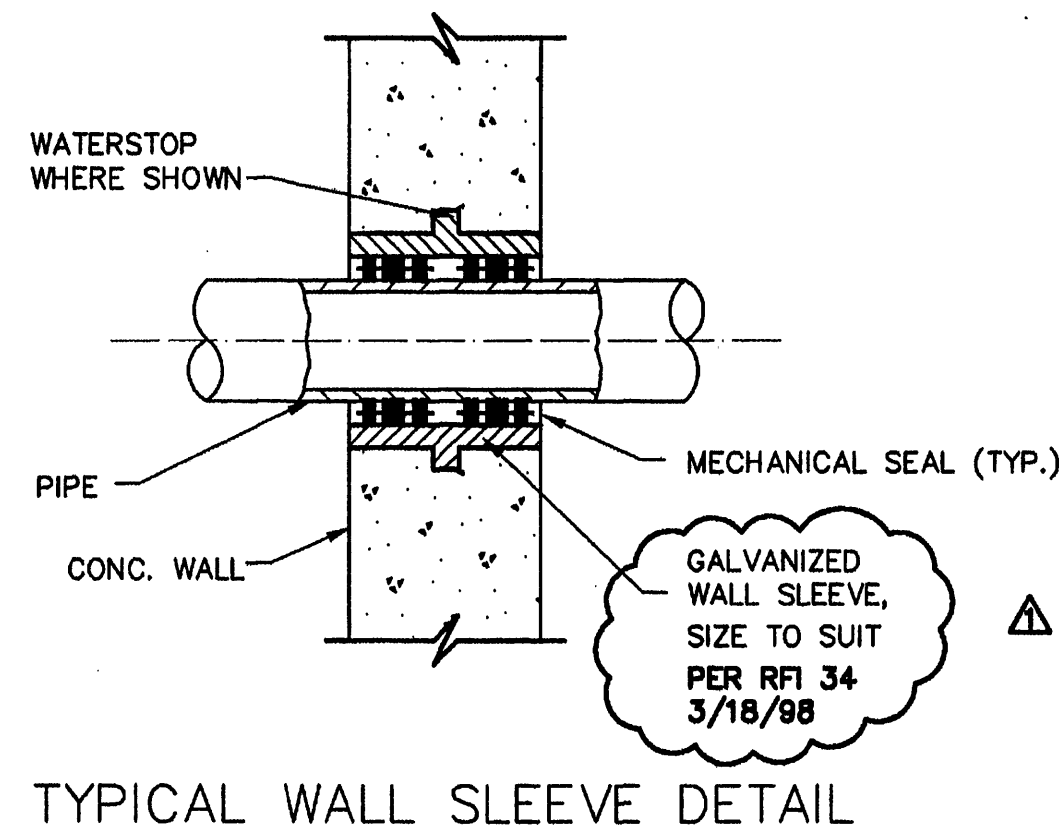


TYPICAL CLEANOUT

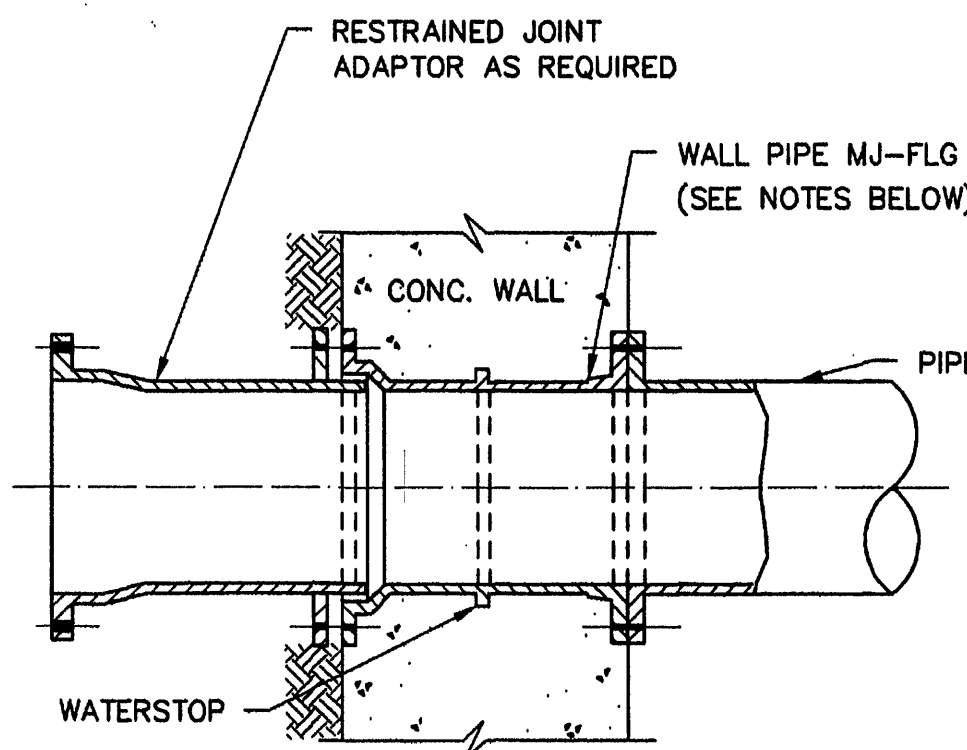
- NOTES:
1. PROVIDE HARNESSSED TEMPORARY PLUG WITH AIR RELEASE FOR TESTING PRESSURE PIPE. REINSTALL HARNESSSED PLUG UPON COMPLETION OF TESTING.
 2. ALL PIPE SHALL BE HARNESSSED FOR PRESSURE PIPING.
 3. SIZE OF CLEANOUT PIPE SHALL BE LINE SIZE UP TO 6-INCHES IN DIAMETER AND MINIMUM OF 6-INCHES IN DIAMETER FOR ALL LINES OVER 6-INCHES IN DIAMETER.



TYPICAL POST HYDRANT DETAIL

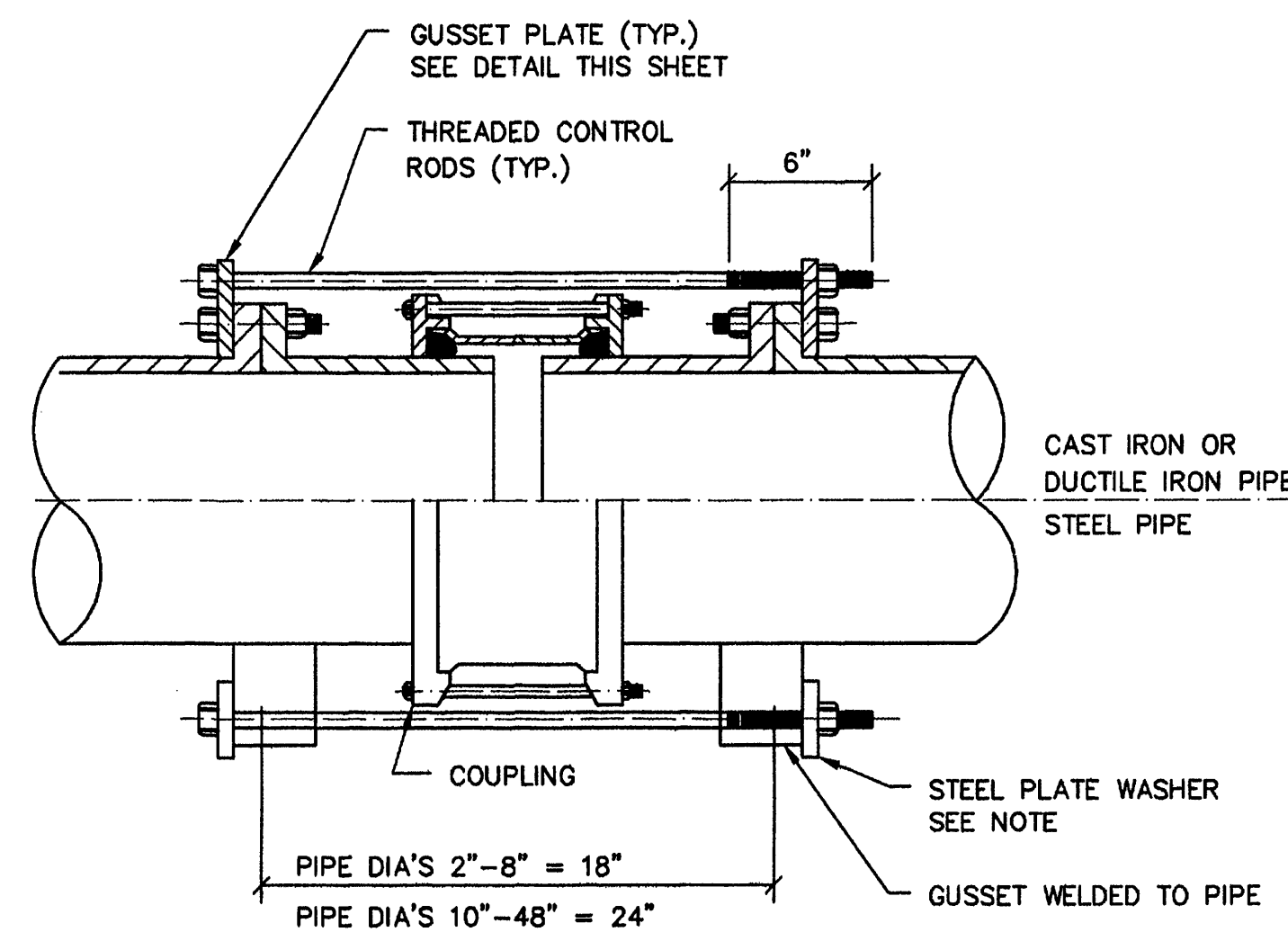


TYPICAL WALL SLEEVE DETAIL

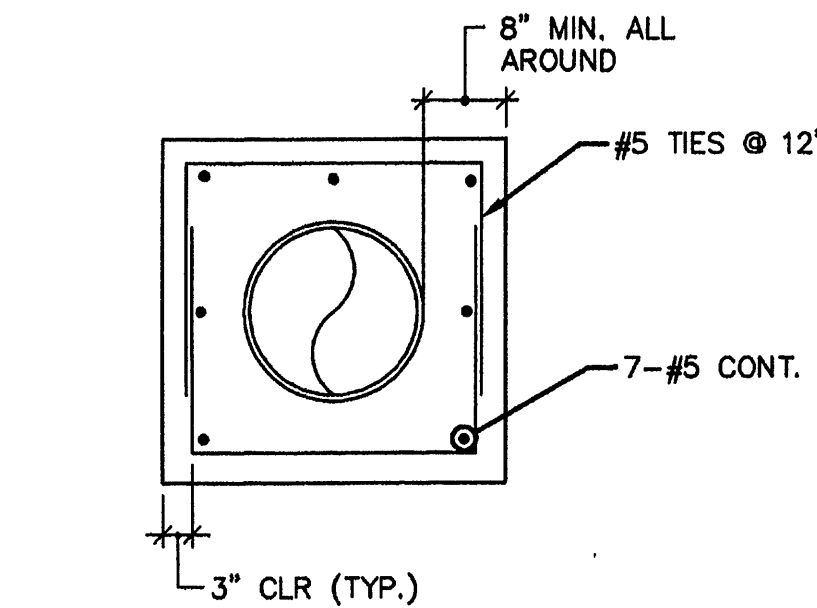


- NOTES:
1. WALL PIPE CAN BE MJ-FLG.(ABOVE)MJ-MJ FLG.-FLG., MJ-PE AND FLG.-PE
 2. WALL PIPE IS TO SET FLUSH WITH WALL UNLESS OTHERWISE NOTED.
 3. FLANGES & MJ SHOULD BE DRILLED AND TAPPED FOR STUDS

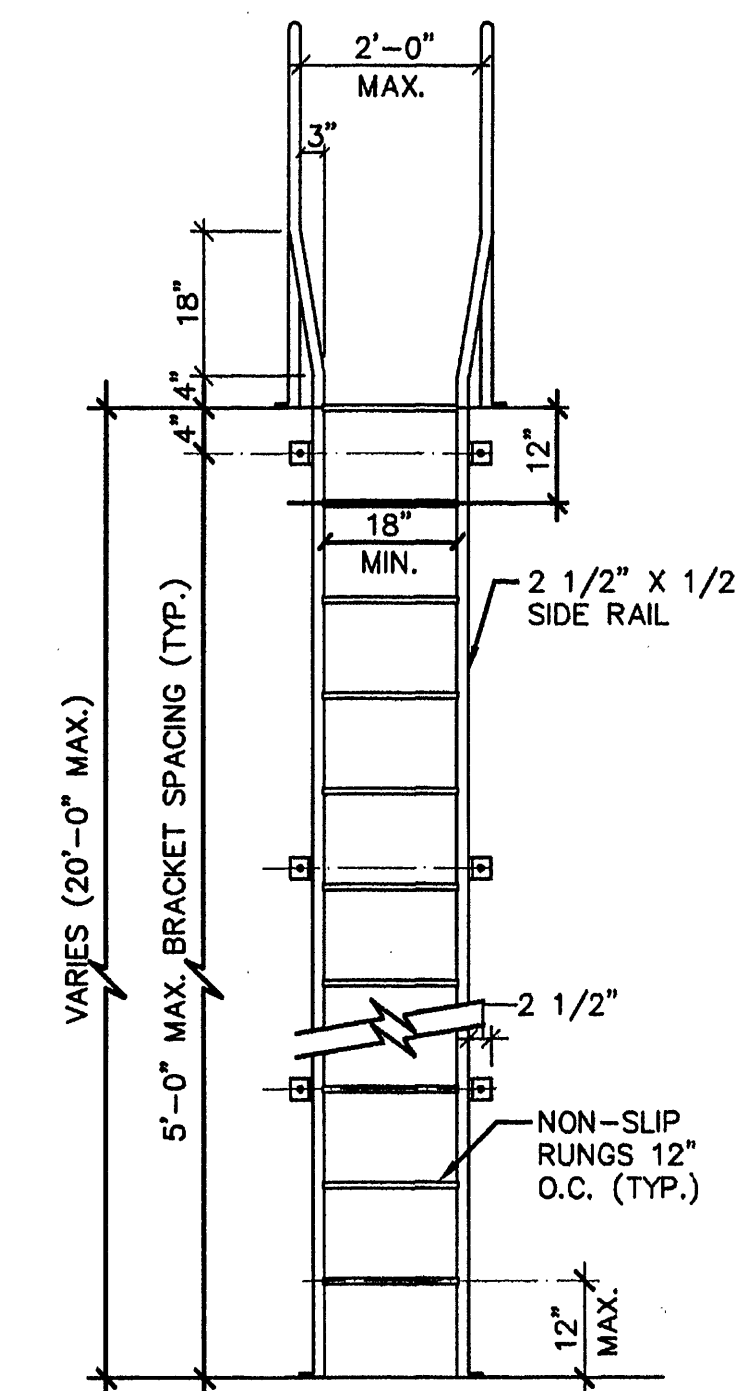
TYPICAL WALL PIPE DETAIL



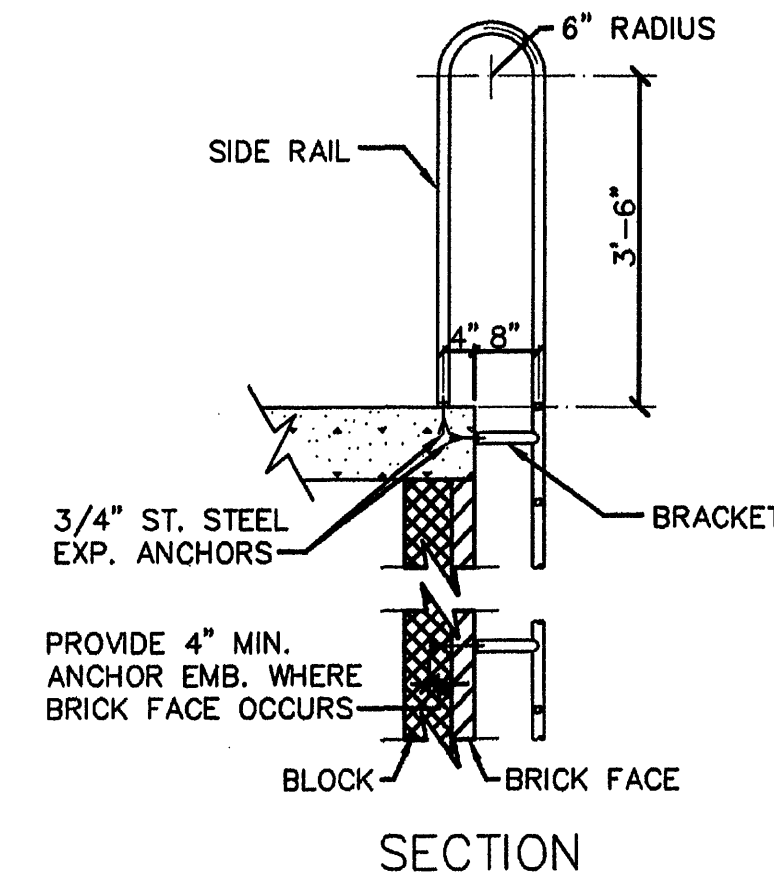
HARNESSED COUPLING DETAIL



TYPICAL PIPE ENCASEMENT DETAIL



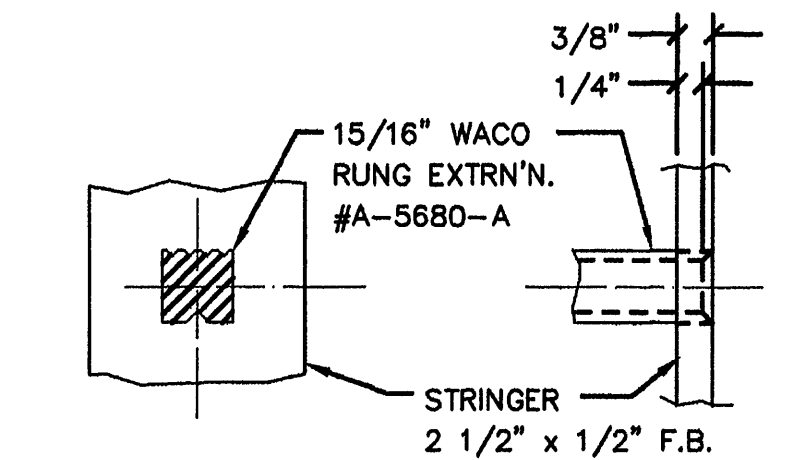
ELEVATION



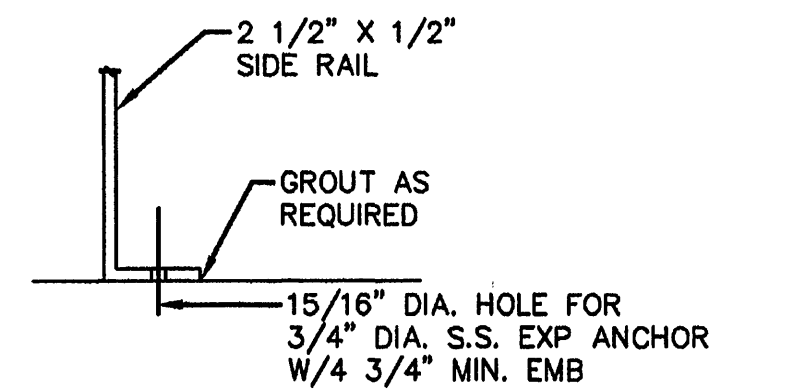
SECTION

1. USE ALUMINUM CONSTRUCTION FOR ALL LADDERS
2. FABRICATION: SHOP WELDED
3. FOR CONNECTION INTO CONCRETE BLOCK, FILL CELLS SOLID W/ GROUT AND PROVIDE 3/4\"/>

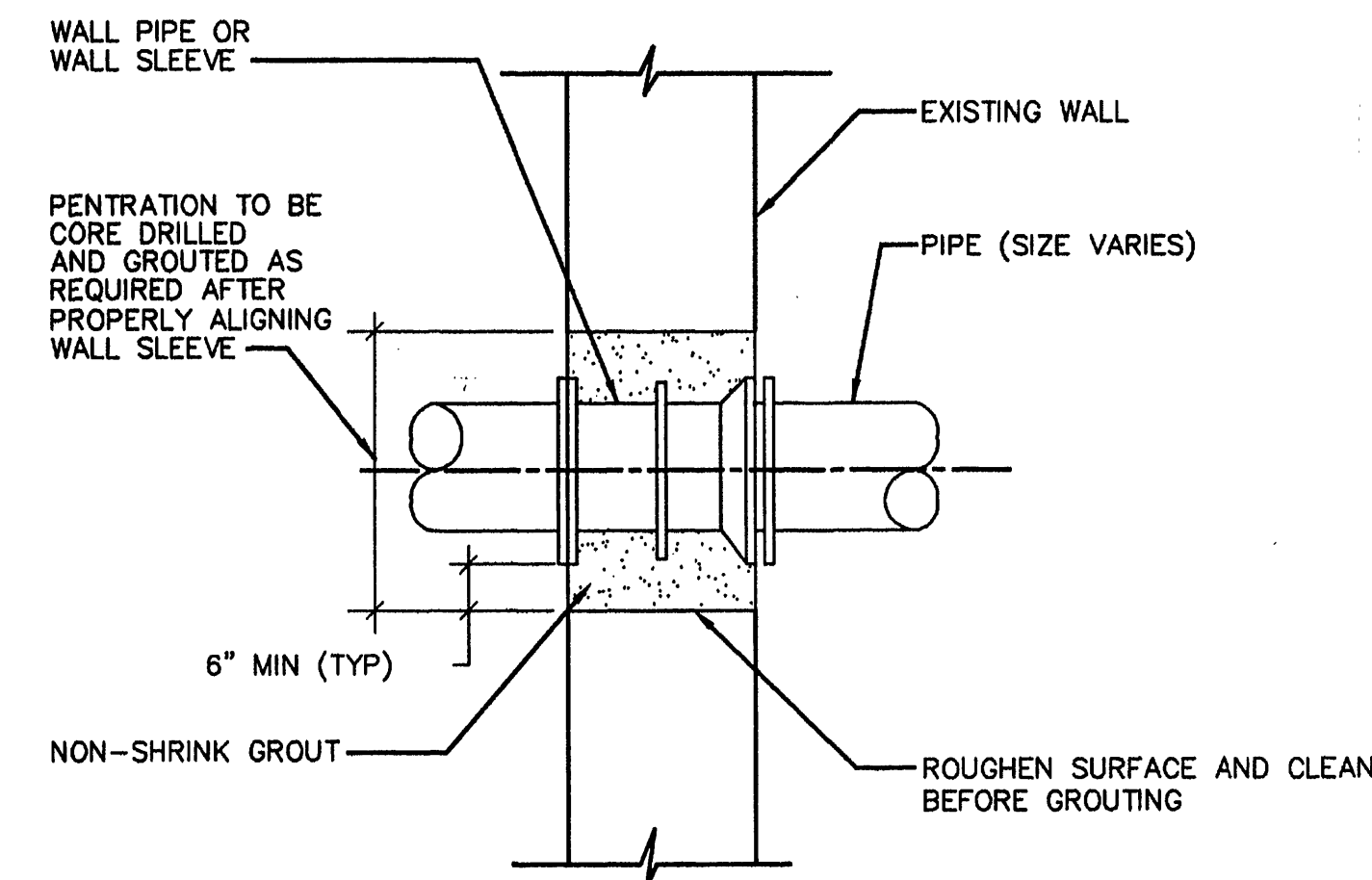
ALUMINUM LADDER DETAIL



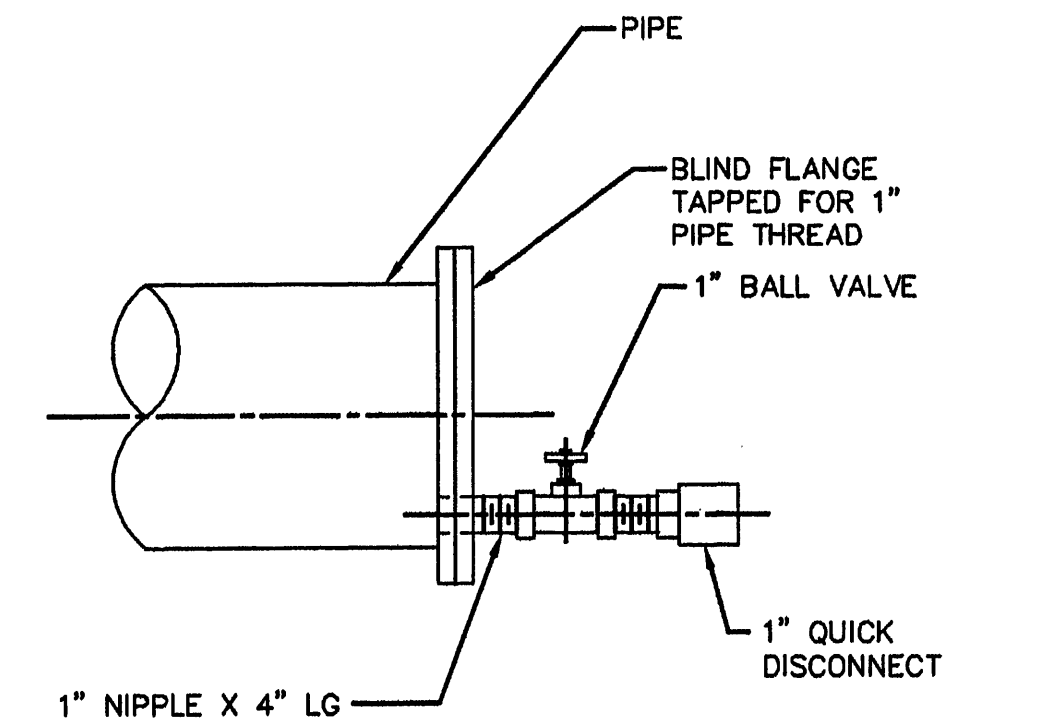
RUNG DETAIL
LADDER CONSTRUCTION



BASE CONNECTION

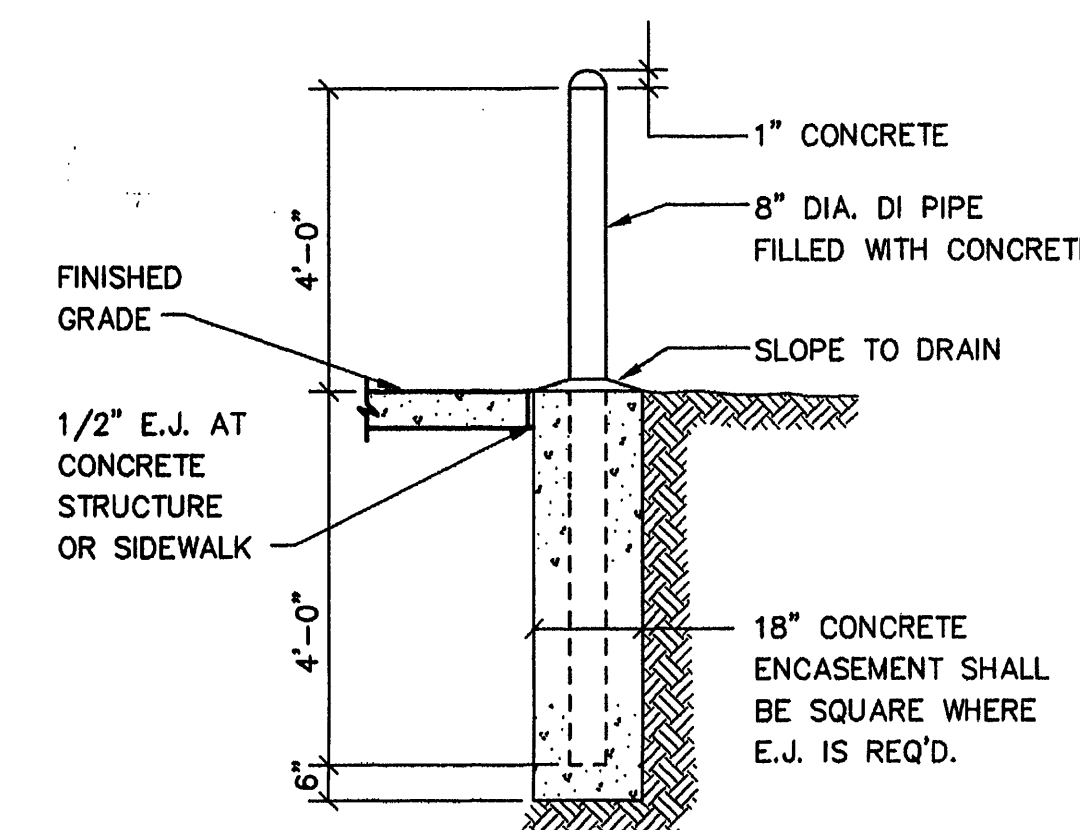


EXISTING WALL PENETRATION DETAIL

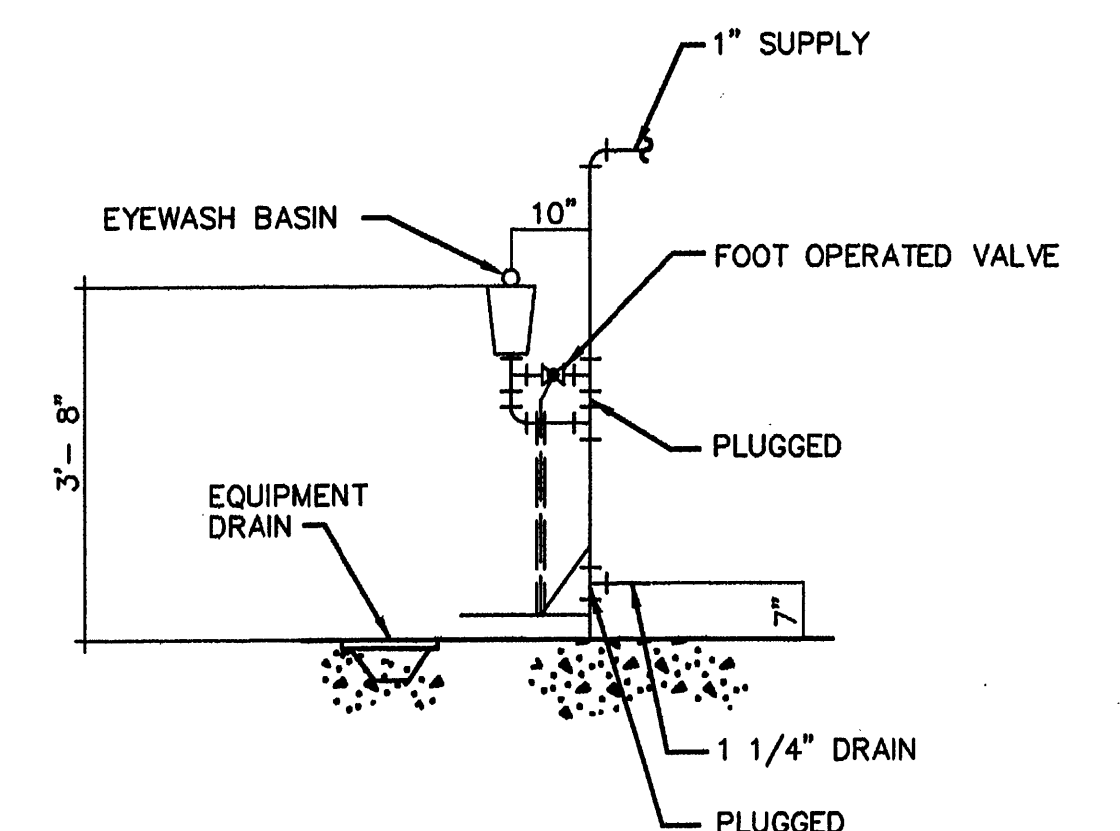


NOTE: FLUSHING CONNECTION MATERIALS SHALL BE COMPATIBLE WITH BLIND FLANGE MATERIAL.

TYPICAL FLUSHING HOSE CONNECTION DETAIL



TYPICAL BOLLARD DETAIL



TYPICAL EYE-WASH DETAIL

**MALCOLM
PIRNIE**

11832 Rock Landing Drive, Suite 400
Newport News, Virginia 23606

REVISIONS			
NO.	BY	DATE	REMARKS
1	ARB	JAN. 2000	RECORD DRAWING

DES. CWM
OWN. MPK
CKD. GUJ

ROANOKE
VIRGINIA, CHARTERED 1882

CITY OF ROANOKE, VIRGINIA
WATER POLLUTION
CONTROL PLANT
UPGRADE AND EXPANSION

MISCELLANEOUS DETAILS

NOT TO SCALE U.O.N.

COPYRIGHT © 1997
MALCOLM PIRNIE, INC.
DATE MAY 1997
M SHEET 30 OF 30
CAD REF. NO. 0060MQ31