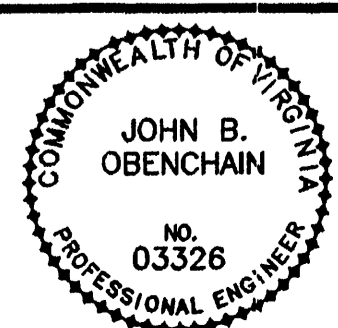
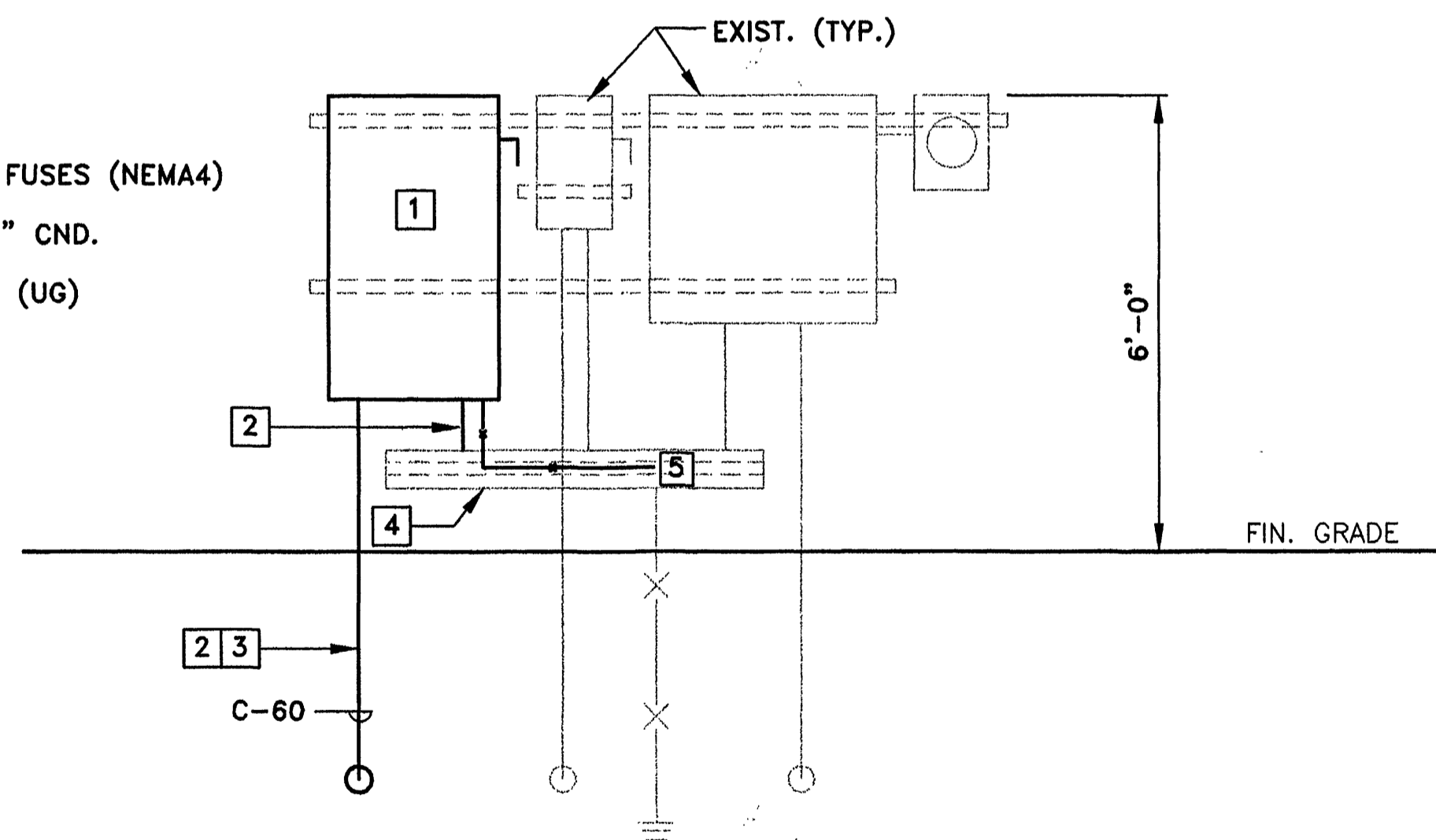


3 SETS OF:
(2) 2" CONDUITS FOR POWER CABLE
(1) 1 1/4" CONDUIT FOR SENSOR CABLES
PUMP CABLES SUPPLIED BY PUMP MANUFACTURER TO EXTEND TO CONTROL PANEL.

NOTES:

- 1 400A FUSIBLE SWITCH WITH 300A FUSES (NEMA4)
- 2 3 #350MCM + 1 #2/0 GND. IN 3" CND.
- 3 TO PUMP MOTOR CONTROL CENTER (UG)
- 4 EXISTING WIRING TROUGH
- 5 CONNECT TO EXIST. GROUND.



Mattern & Craig, Inc.
CONSULTING ENGINEERS • SURVEYORS
101 FIRST STREET, NW
ROANOKE, VIRGINIA 24018
804 946-8842
804 946-7891 FAX

REVISIONS		REMARKS
NO.	BY	DATE
1	SWH	2/25/98
2	ARB	JAN. 2000
		REVISED STATION LOCATION
		RECORD DRAWING

DES - JBO
DWN - LDL, MNT
CKD - JBO



CITY OF ROANOKE, VIRGINIA WATER POLLUTION CONTROL PLANT UPGRADE AND EXPANSION

BAF INFLUENT PUMP STATION
POWER DISTRIBUTION
SCALE: AS SHOWN

DATE - MAY, 1997
E SHEET - 16 OF - 36
CAD REF. NO. - E16.DWG