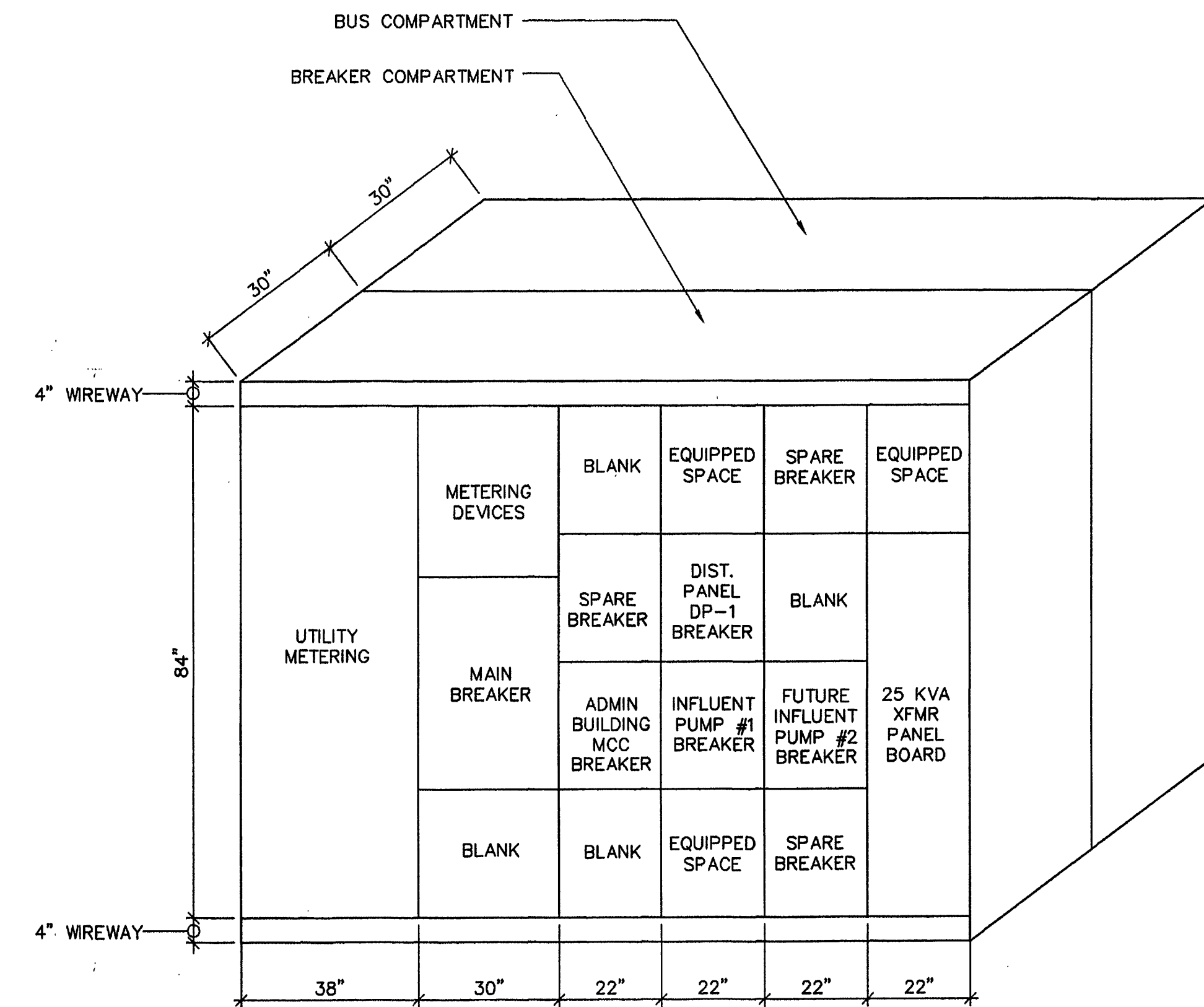


SWITCHGEAR SG-3 PLAN

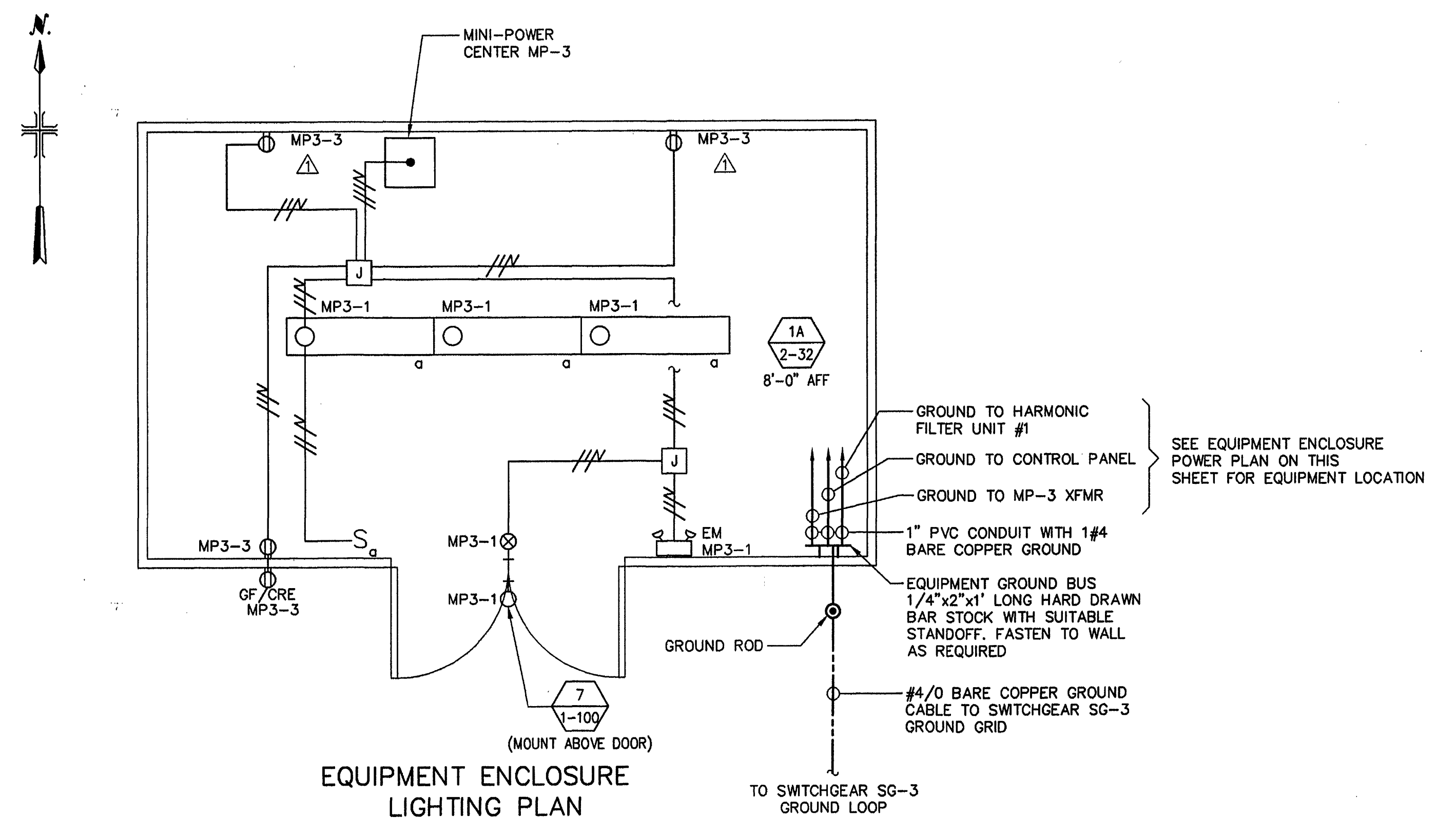


SWITCHGEAR SG-3 FRONT VIEW

N.T.S.
(SEE NOTE #3)
NOTE: EQUIPMENT PAD AND NEMA 3R WALK-ENCLOSURE NOT SHOWN

- NOTES:
1. FOR AREA CLASSIFICATION SEE SHEET E-21
 2. STUB CONDUITS UP INSIDE BUILDING AND ROUTE TO EQUIPMENT. SEE INTERCONNECTION DIAGRAM ON SHEET E-19 FOR CONDUIT AND WIRE REQUIREMENTS. PROVIDE CONDUIT PULLING POINT (LBD FITTINGS OR PULL BOXES) AS REQUIRED.
 3. SWITCHGEAR SG-3 DIMENSIONS ARE APPROXIMATE AND MAY VARY BASED ON THE MANUFACTURER OF EQUIPMENT.
 4. COORDINATE THE INSTALLATION OF CONDUITS WITH HVAC LOUVER.

EQUIPMENT ENCLOSURE-POWER PLAN
(SEE SHEET E-20A)



EQUIPMENT ENCLOSURE
LIGHTING PLAN

**MALCOLM
PIRNIE**

11832 Rock Landing Drive, Suite 400
Newport News, Virginia 23606

REVISIONS				REMARKS
NO.	BY	DATE		
1	ARB	JAN. 2000	RECORD DRAWING	

DES -- GJM --
DWN -- GJM --
CKD -- TK --



CITY OF ROANOKE, VIRGINIA
WATER POLLUTION
CONTROL PLANT
UPGRADE AND EXPANSION

PLANT INFLUENT PUMP STATION
SWITCHGEAR SG-3
PLAN AND DETAILS
SCALE: 3/8"=1'-0"

COPYRIGHT © 1997
MALCOLM PIRNIE, INC.
DATE -- MAY 1997 --
E SHEET 20 OF 36
CAD REF. NO. 0060E695