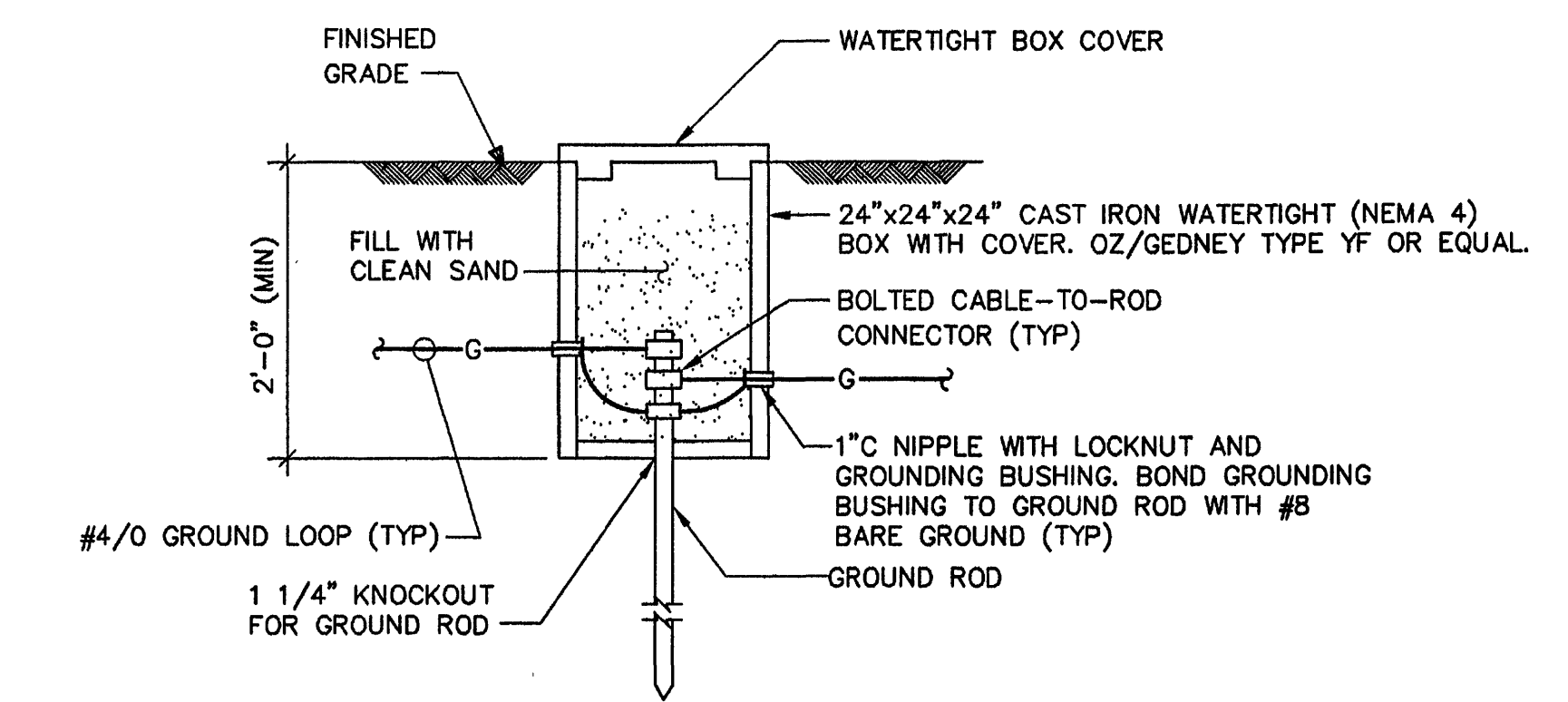
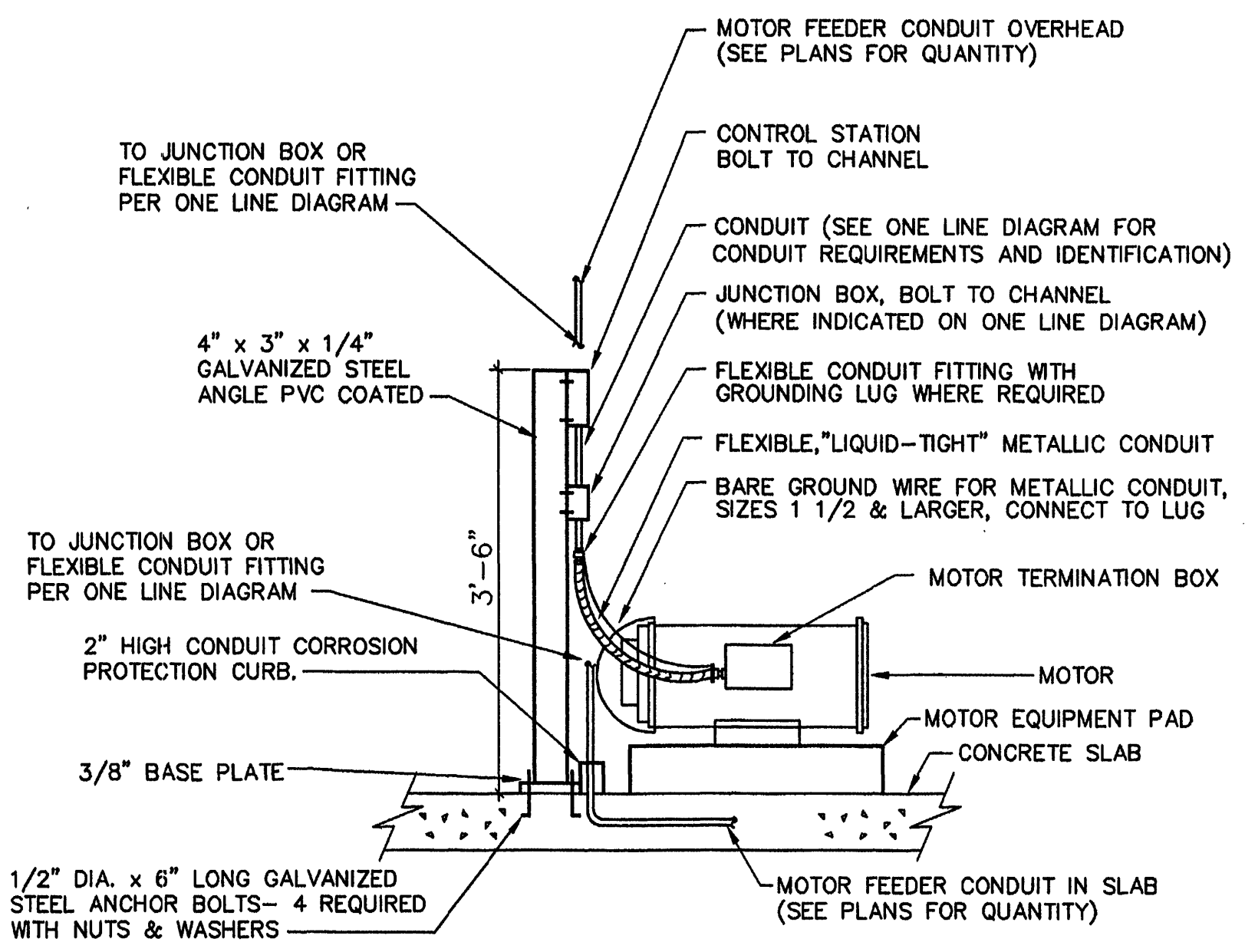


TYPICAL EQUIPMENT GROUNDING DETAIL



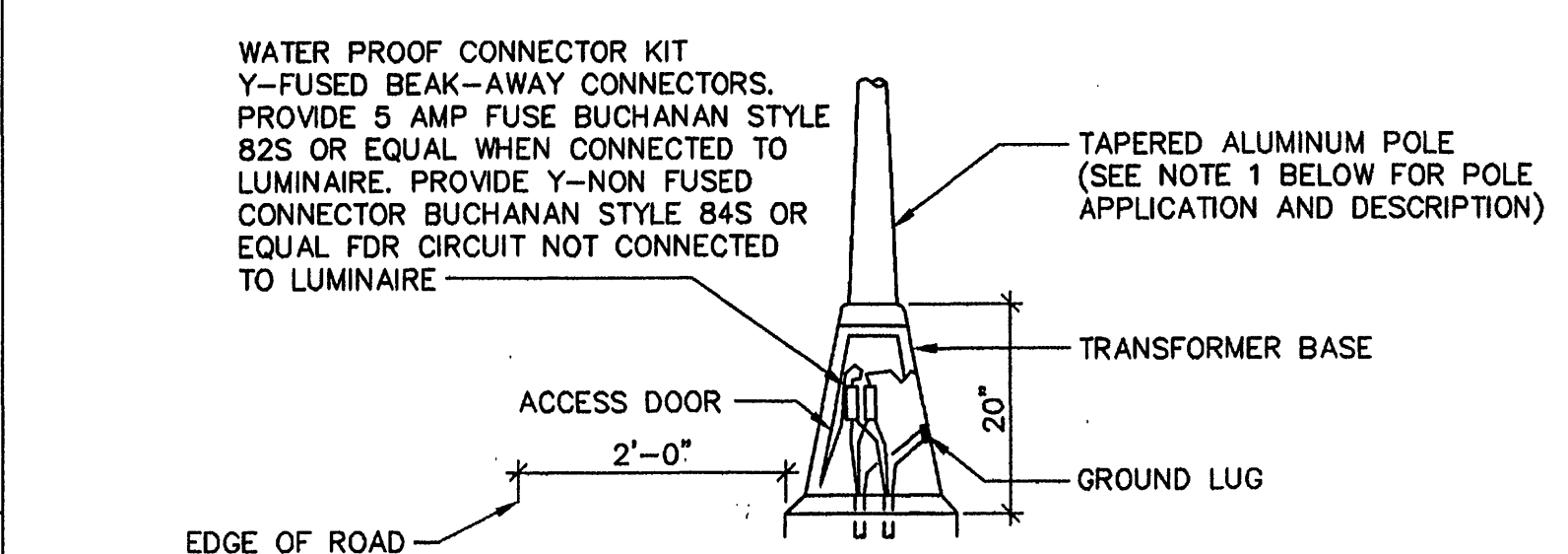
EXTERIOR GROUND TEST POINT



ELECTRIC MOTOR TERMINATION AND DEVICE MOUNTING DETAIL

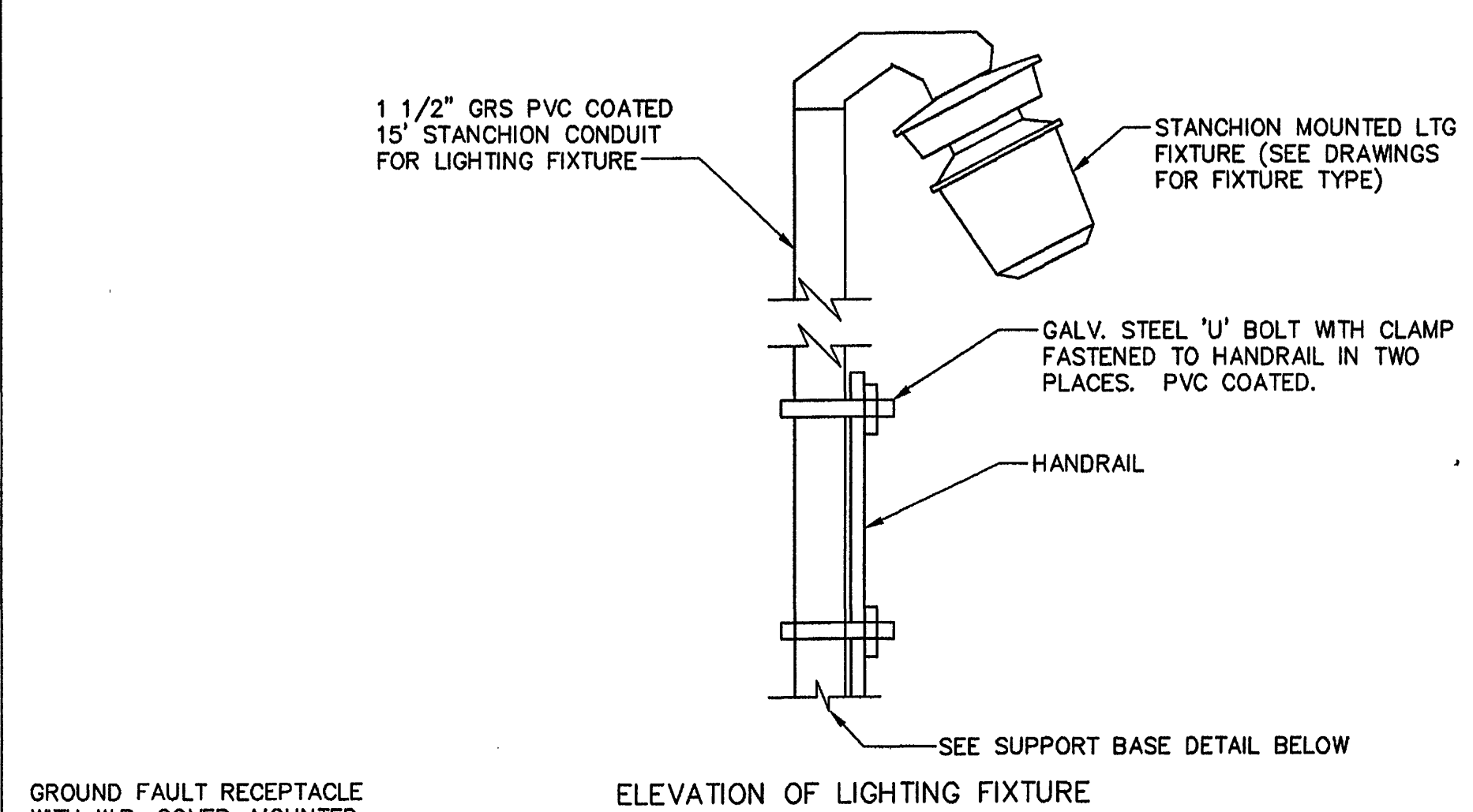
TYPE OF CONNECTION	BOLTED OR COMPRESSION		WELDED
	BURNDY CAT#	T&B CAT# CADWELL CAT#	
CABLE TO LUG	YA	54000 SERIES	LA
CABLE TO ROD	-	53000 SERIES	GT
ROD TO ROD	GAR	-	GR
CABLE TO CABLE	GX	53000 SERIES	TV OR TA
CABLE TO PIPE	-	-	HA OR VS
CABLE TO FLAT SURFACE	GB	-	HA OR HS
BRAID TO PIPE	GG	-	-
ROD TO CABLE	-	-	-
ROD TO ROD	-	-	-
CABLE TO PIPE OR CONDUIT	-	-	-
CABLE TO CABLE	-	-	-
CABLE TO LUG	-	-	-
CABLE TO ROD	-	-	-
ROD TO ROD	-	-	-
CABLE TO CABLE	-	-	-
CABLE TO PIPE	-	-	-
CABLE TO FLAT SURFACE	-	-	-
BRAID TO PIPE	-	-	-

GROUNDING CONNECTIONS

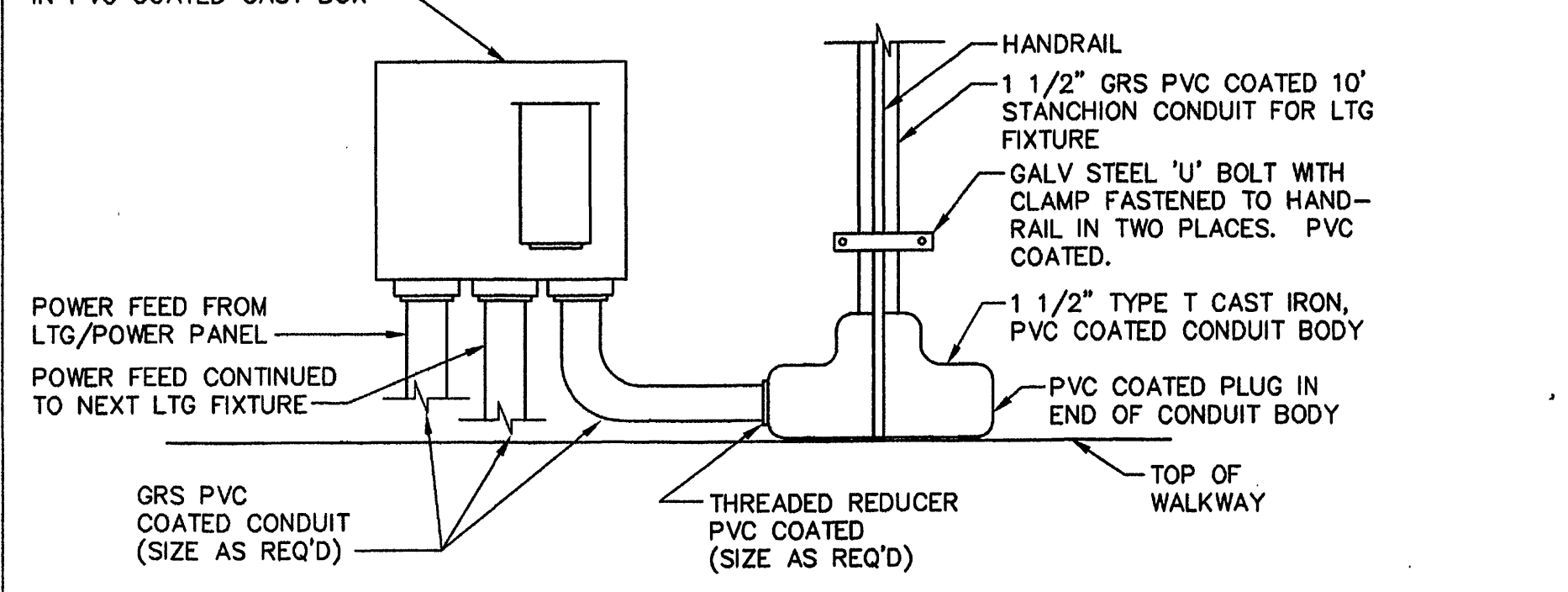


ROADWAY LIGHTING ASSEMBLY DETAILS

NOTES:
1. FOR ROADWAY LIGHTING: 25 FOOT ALUMINUM POLE WITH TRANSFORMER BASE AND 4 FOOT ARM FOR FIXTURE INSTALLATION. POLE SHALL HAVE NECESSARY HARDWARE FOR POLE INSTALLATION AND BE ABLE TO WITHSTAND THE EFFECT OF 90 MILE WIND VELOCITY. FOR POLE TYPE SEE FIXTURE SCHEDULE.

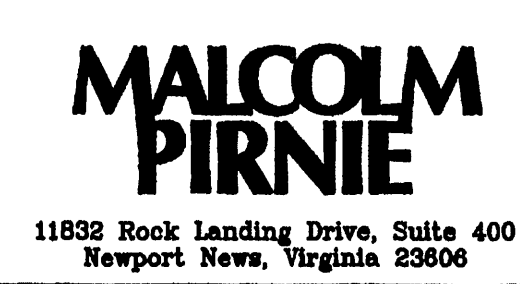


ELEVATION OF LIGHTING FIXTURE



DETAIL OF LIGHTING FIXTURES AND SUPPORT AT TANK WALKWAY

DETAIL 1 14 35
N.T.S.



REVISIONS			
NO.	BY	DATE	REMARKS
1	ARB	JAN. 2000	RECORD DRAWING

DES ---TK---
DWN ---TK---
CKD ---FAS---



CITY OF ROANOKE, VIRGINIA
WATER POLLUTION
CONTROL PLANT
UPGRADE AND EXPANSION

ELECTRICAL
GROUNDING AND MISCELLANEOUS DETAILS
SCALE: NONE

COPYRIGHT © 1997
MALCOLM PIRNIE, INC.
DATE --- MAY 1997 ---
E SHEET 35 OF 36 ---
CAD REF. NO. 0060E710 ---

7361 0060028696 I:\CAD\PROJ\00600286\0060E710 Scale: 1:11 Date: 05/06/1997 Time: 13:29