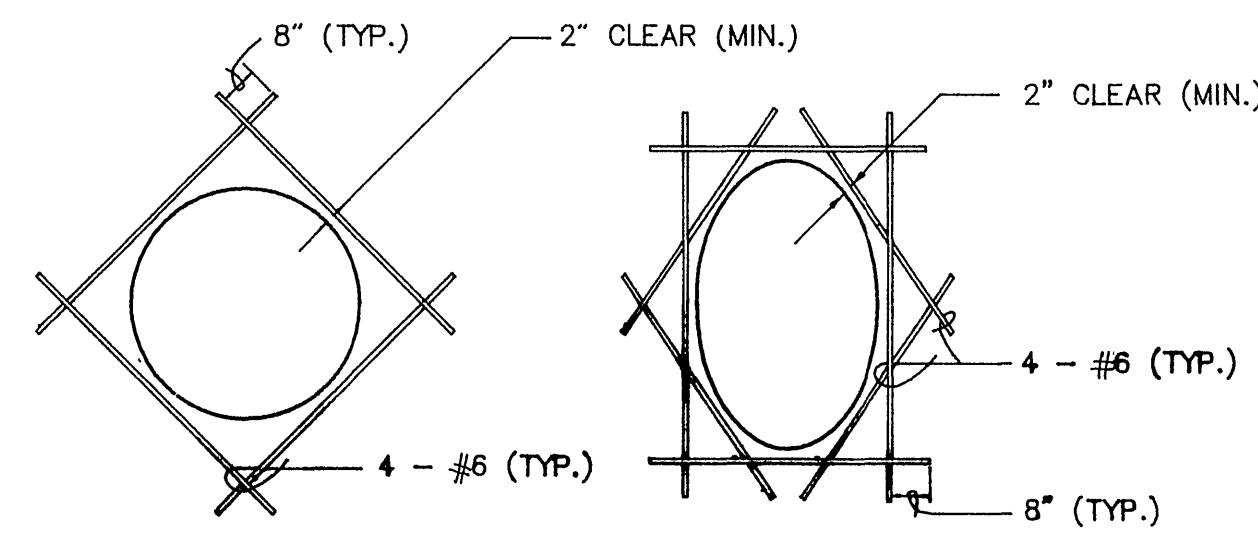
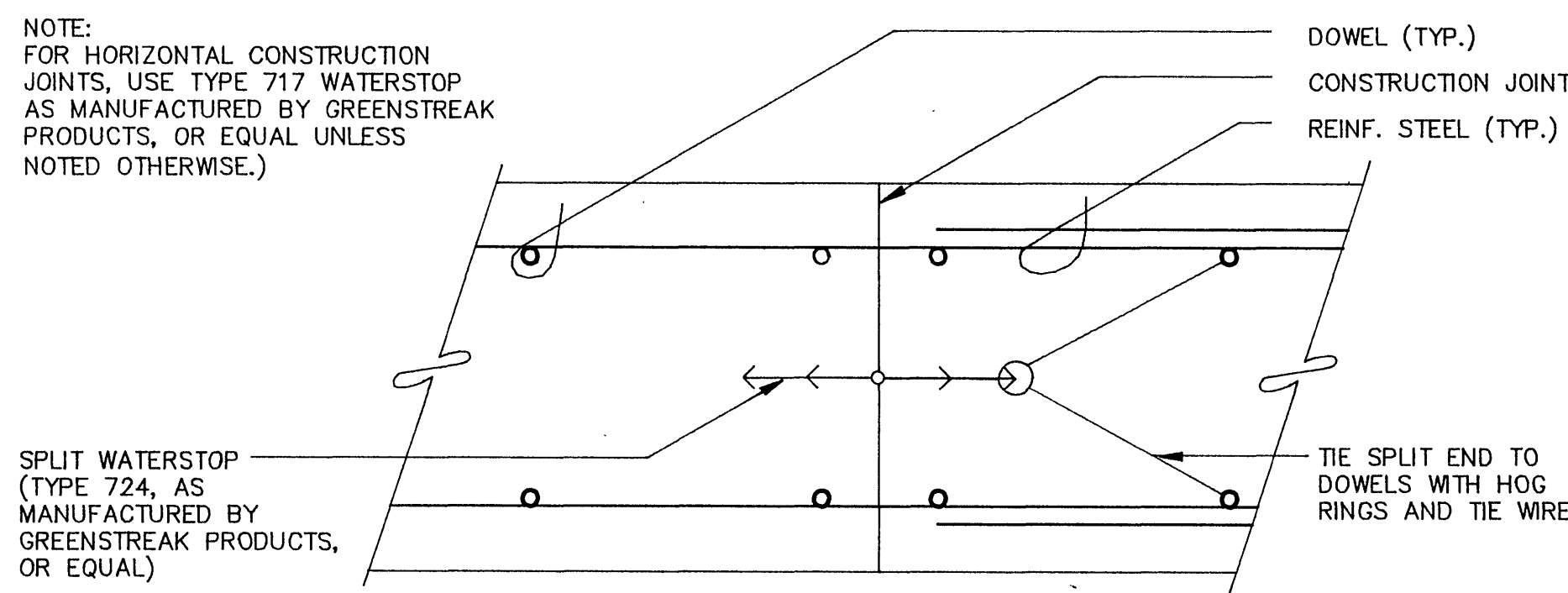
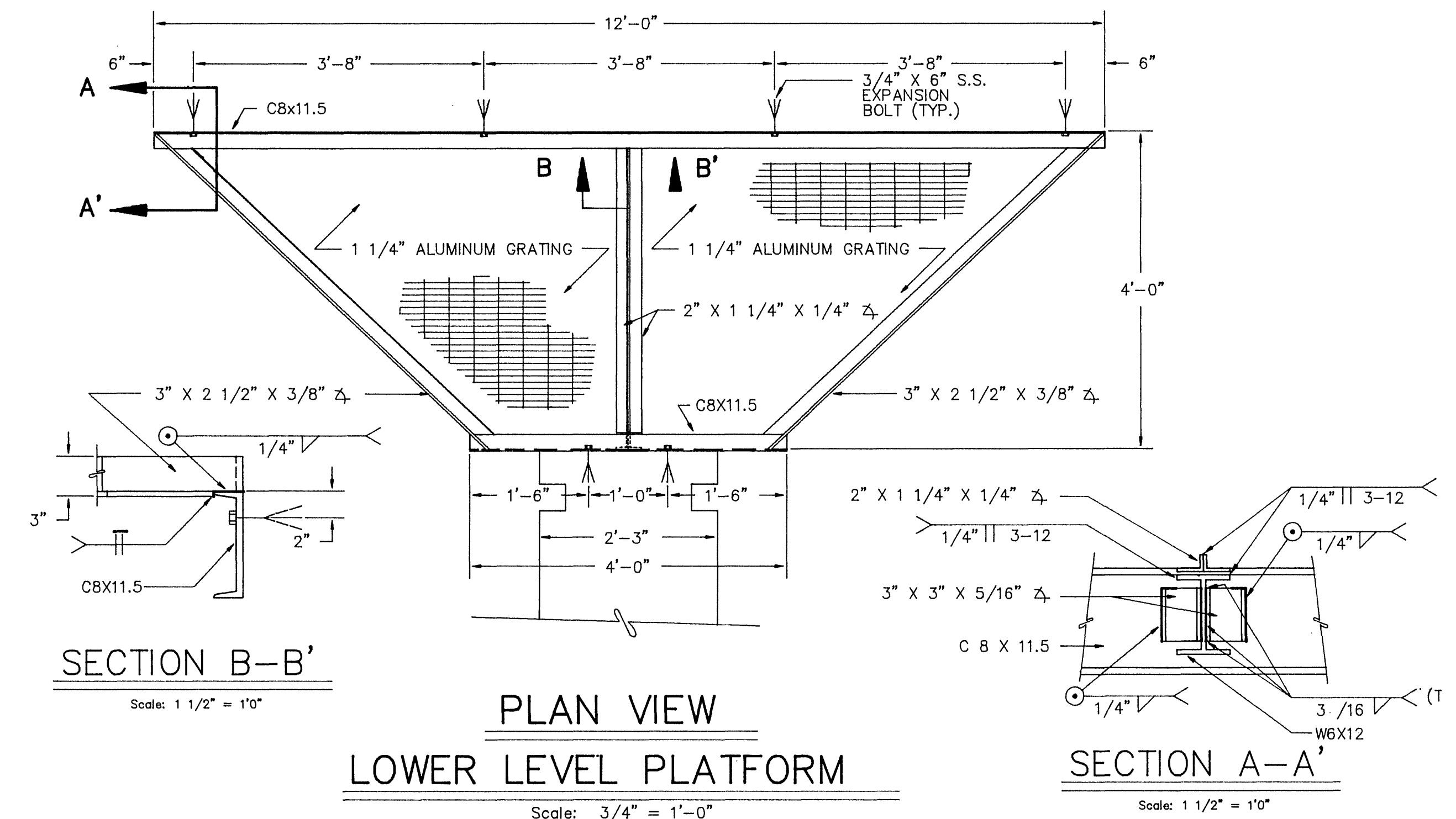


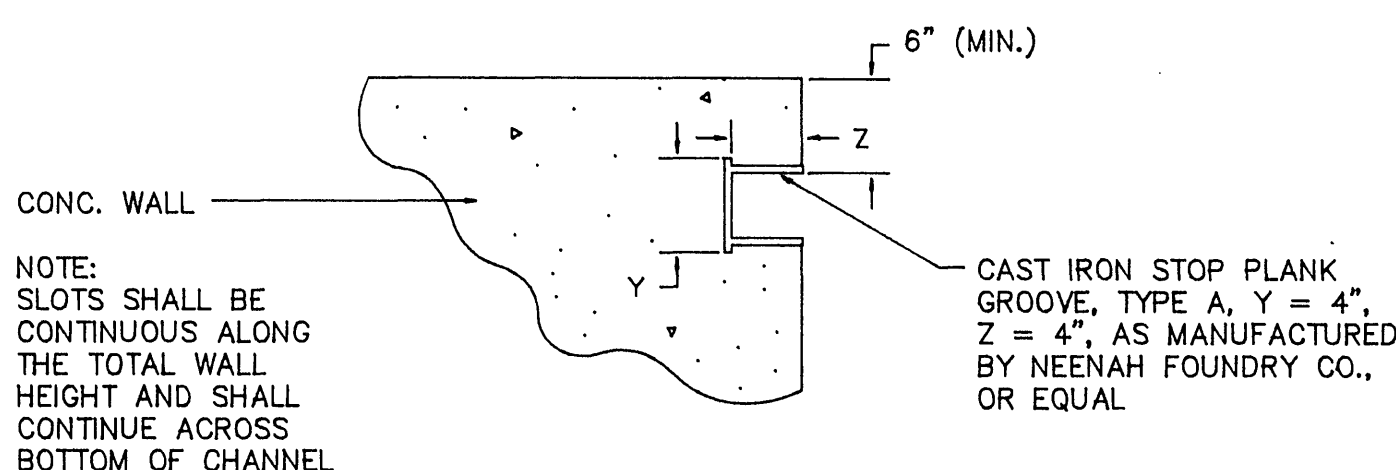
TYPE "E"
WALL SLOT DETAIL
Not to Scale



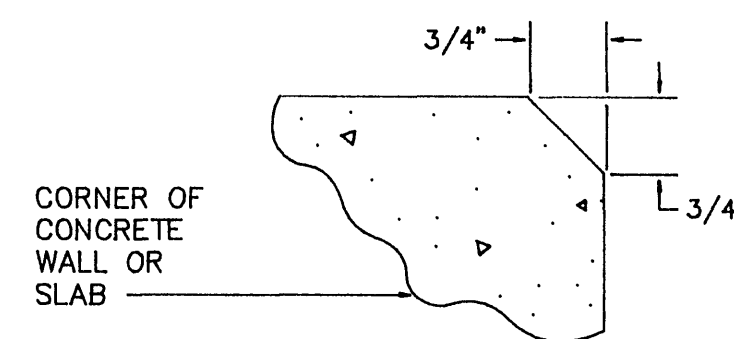
ADDITIONAL
WALL REINFORCEMENT
DETAIL
Not to Scale



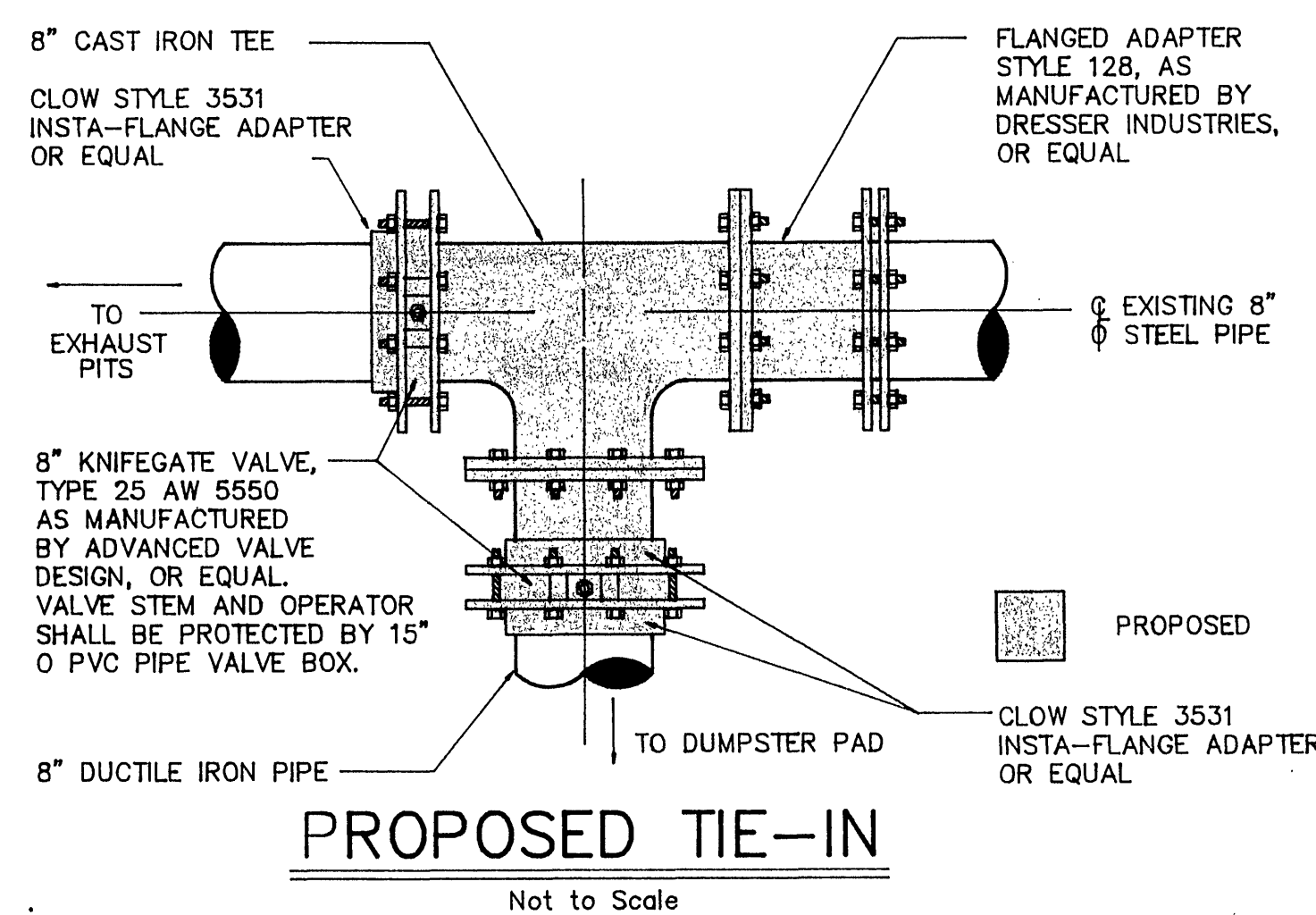
VERTICAL CONSTRUCTION
JOINT DETAIL
Not to Scale



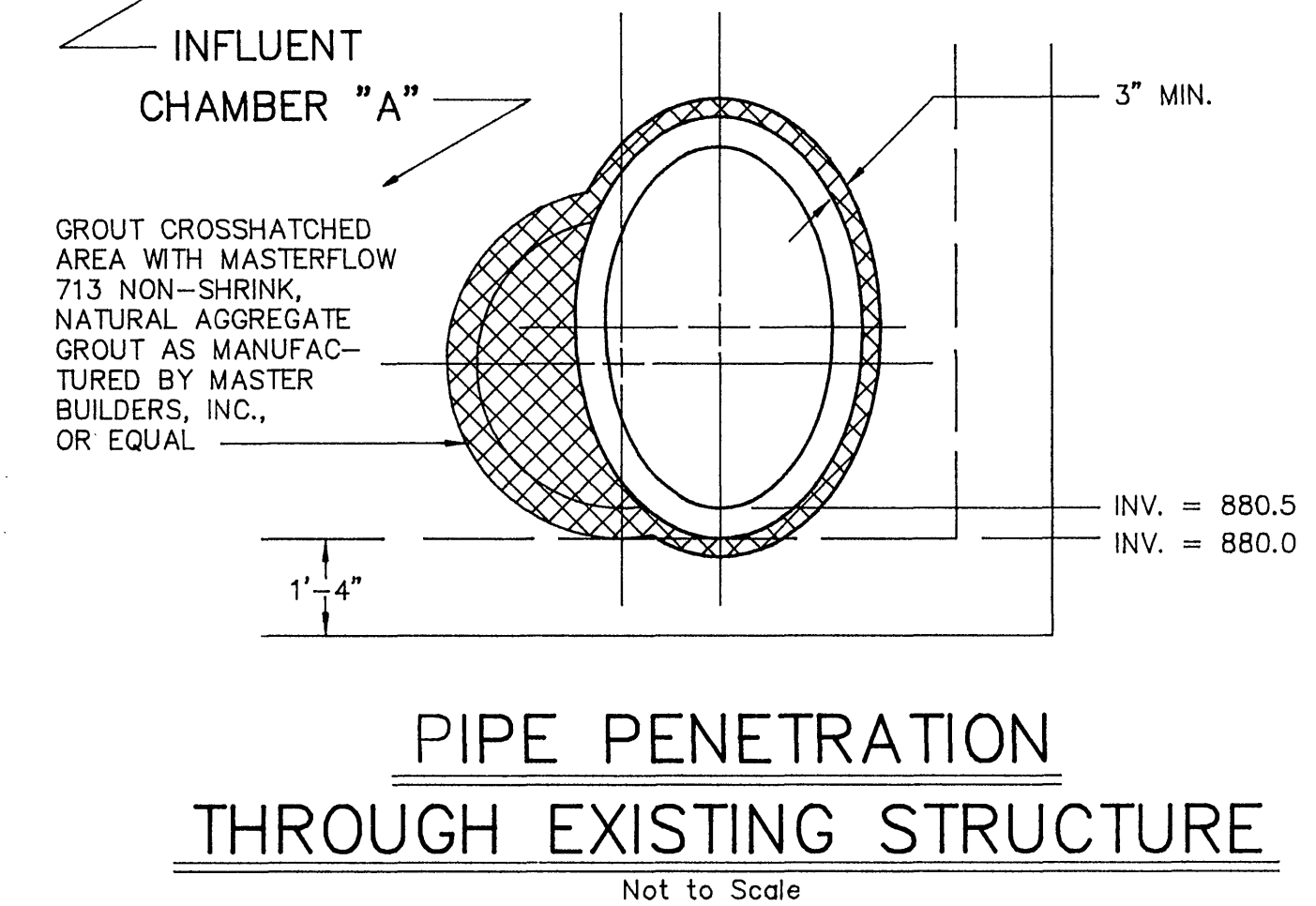
TYPE "A"
WALL SLOT DETAIL
Not to Scale



TYPICAL
CHAMFER DETAIL
Not to Scale



- NOTES:
1. GROUT SHALL BE PLACED INTO WALL IN PLASTIC STATE IN ACCORDANCE WITH MANUFACTURER'S RECOMMENDATIONS.
 2. CAVITY SHALL BE FILLED WITH GROUT BEGINNING AT THE BOTTOM AND PROCEEDING UPWARD IN SUCH A MANNER AS TO ELIMINATE ALL AIR POCKETS IN THE CAVITY.
 3. LOCATIONS OF EXISTING AND NEW PIPES ARE SHOWN ON THE DRAWING.

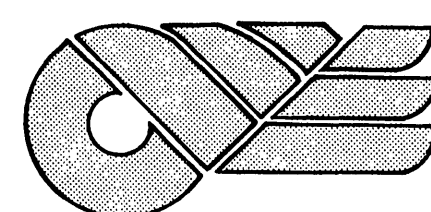


HEADWORKS IMPROVEMENTS
FOR
ROANOKE CITY
WASTEWATER TREATMENT FACILITY
ROANOKE, VIRGINIA

DAVID I. RIGBY
8159

REVISIONS		
NO.	DATE	BY

DESIGNED: CES	SHEET: 7 OF 8
DRAWN: CCB	SCALE: AS SHOWN
CHECKED: WEP	DATE: NOV, 1987
APPROVED: DJR	PROJECT: F87025



CLEAN WATER ENGINEERS, INC.

P.O. BOX 218
FINCASTLE, VIRGINIA 24090

P.O. BOX 3225
STAUNTON VIRGINIA, 24401